

# ARTICLE 2. **FORM**

[ **FORM** - FRONTAGE - STANDARDS ] [ USE - DENSITY ]

Part 2A. **Introduction**

Part 2B. **Form Districts**

Part 2C. **Form Rules**

# CONTENTS

<b>Part 2A.</b>	<b>Introduction . . . . .</b>	<b>2-3</b>
Div. 2A.1.	Orientation . . . . .	2-4
Div. 2A.2.	General Rules. . . . .	2-11
<b>Part 2B.</b>	<b>Form Districts . . . . .</b>	<b>2-12</b>
Div. 2B.1.	Rural Form Districts . . . . .	2-14
Div. 2B.2.	Estate Form Districts. . . . .	2-14
Div. 2B.3.	House Form Districts . . . . .	2-14
Div. 2B.4.	Very Low-Rise Narrow Form Districts . . . . .	2-14
Div. 2B.5.	Very Low-Rise Medium Form Districts. . . . .	2-14
Div. 2B.6.	Very Low-Rise Broad Form Districts . . . . .	2-14
Div. 2B.7.	Very Low-Rise Full Form Districts . . . . .	2-15
Div. 2B.8.	Low-Rise Narrow Form Districts . . . . .	2-16
Div. 2B.9.	Low-Rise Medium Form Districts. . . . .	2-17
Div. 2B.10.	Low-Rise Broad Form Districts . . . . .	2-19
Div. 2B.11.	Low-Rise Full Form Districts . . . . .	2-21
Div. 2B.12.	Mid-Rise Narrow Form Districts . . . . .	2-23
Div. 2B.13.	Mid-Rise Medium Form Districts . . . . .	2-24
Div. 2B.14.	Mid-Rise Broad Form Districts . . . . .	2-25
Div. 2B.15.	Mid-Rise Full Form Districts. . . . .	2-27
Div. 2B.16.	Moderate-Rise Medium Form Districts. . . . .	2-28
Div. 2B.17.	Moderate-Rise Broad Form Districts . . . . .	2-33
Div. 2B.18.	Moderate-Rise Full Form Districts . . . . .	2-34
Div. 2B.19.	High-Rise Medium Form Districts . . . . .	2-35
Div. 2B.20.	High-Rise Broad Form Districts. . . . .	2-37
Div. 2B.21.	High-Rise Full Form Districts . . . . .	2-43
<b>Part 2C.</b>	<b>Form Rules . . . . .</b>	<b>2-44</b>
Div. 2C.1.	Lot Size . . . . .	2-45
Div. 2C.2.	Coverage . . . . .	2-48
Div. 2C.3.	Amenity . . . . .	2-54
Div. 2C.4.	Floor Area Ratio & Height . . . . .	2-67
Div. 2C.5.	Building Mass. . . . .	2-78
Div. 2C.6.	Upper-Story Bulk . . . . .	2-82

# PART 2A. INTRODUCTION

**Div. 2A.1. Orientation . . . . . 2-4**

    Sec. 2A.1.1. Relationship to Zone String . . . . . 2-4

    Sec. 2A.1.2. How to Use Article 2. (Form) . . . . . 2-4

    Sec. 2A.1.3. Form District Diagrams . . . . . 2-6

    Sec. 2A.1.4. Form District Naming Convention . . . . . 2-9

**Div. 2A.2. General Rules . . . . . 2-11**

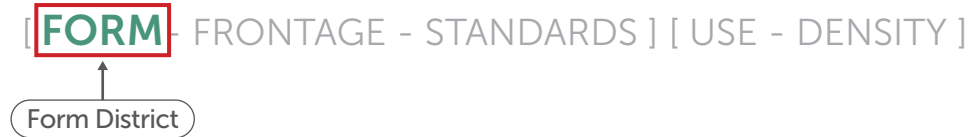
    Sec. 2A.2.1. Form . . . . . 2-11

    Sec. 2A.2.2. Form Applicability . . . . . 2-11

## DIV. 2A.1. **ORIENTATION**

### SEC. 2A.1.1. **RELATIONSHIP TO ZONE STRING**

A zone string is composed of the following districts:



The Form District is a separate and independent component of each zone.

### SEC. 2A.1.2. **HOW TO USE ARTICLE 2. (FORM)**

#### A. **Identify the Applicable Form District**

The first component in a zone string is the Form District applied to a property.

#### B. **Determine Applicable Form District Standards**

1. Form Districts standards are outlined in *Part 2B. (Form Districts)*. Each Form District page identifies the standards specific to that Form District.
2. Each standard on a Form District page in *Part 2B. (Form Districts)* provides a reference to *Part 2C. (Form Rules)* where the standard is explained in detail. Text in italics below a heading provides a definition of that heading.



## Form District Example:

### Zone String

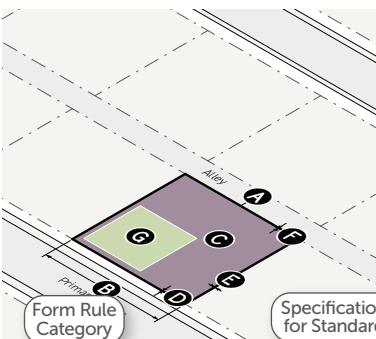
[ **LM2** -MU2-5] [RG1-FA]

Find Your Applied  
Form District

### Part 2B. (Form Districts)

*For Illustrative Purposes Only*  
SEC. 2B.9.2. **LOW-RISE MEDIUM 2 (LM2)**

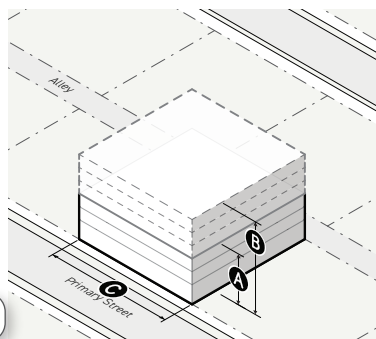
**A. Lot Parameters**



Form Rule Category: **Form Standard**

Form Rule Category	Specification for Standard
1. LOT SIZE	Div. 2C.1
Lot area (min)	2,500 sf
Lot width (min)	25'
2. COVERAGE	Div. 2C.2
Building coverage (max)	90%
Building setbacks	
Primary street (min)	0'
Side street (min)	0'
Side (min)	0'
Rear (min)	0'
Alley (min)	0'
Special: All (min)	0'
3. AMENITY	Div. 2C.3
Lot amenity space (min)	25%
Residential amenity space (min)	None

**B. Bulk and Mass**



Form Rule Category	Specification for Standard
1. FAR & HEIGHT	Div. 2C.4
Floor area ratio (FAR)	
Base (max)	1.5
Bonus (max)	3.0
Height in stories	
Base (max)	3
Bonus (max)	6
2. BUILDING MASS	Div. 2C.5
Building width (max)	100'
Building break (min)	15'
3. UPPER-STORY BULK	Div. 2C.6

Form Standard: **Form Standard**

Label on Graphic: **Label on Graphic**

No Label on Graphic: **No Label on Graphic**

Link to Rules: **Link to Rules**

Standard Not Applicable: **Standard Not Applicable**

Find Your Rules

### Part 2C. (Form Rules)

*For Illustrative Purposes Only*

Form Rule Category: **Form Standard**

SEC. 2C.5.1. **BUILDING WIDTH**

Building width is defined as the horizontal dimension of any building or collection of abutting buildings on a lot.

**A. Intent**

The intent of the standards of this Section (Building Width) is to promote fine-grained patterns of development and prevent long buildings that are significantly out of context with traditional patterns by breaking wide buildings into multiple, clearly distinguished building widths, and to encourage larger projects to provide open space for pedestrians and recreation.

**B. Applicability**

Building width standards apply to new construction or an exterior modification of any frontage lot, line-facing buildings or structures. When the building width standards apply, the standards only apply to those portions of a building or structure located above the ground floor elevation.

**C. Standards**

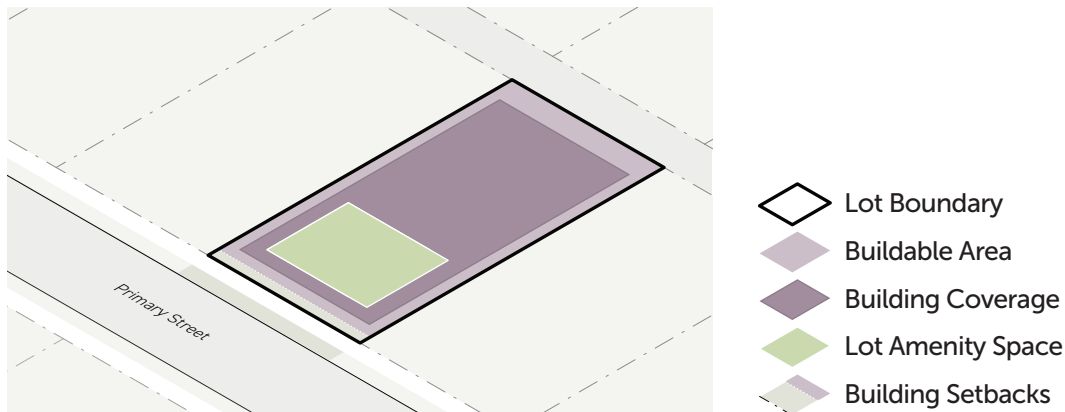
- No applicable building or collection of abutting buildings located on the same lot shall be wider than the maximum building width specified by the applied Form District (Part 2B).
- In order to establish buildings on the same lot as separate buildings for the purpose of measuring maximum building width, a building break shall be provided between the buildings.
- Buildings that are located on separate lots, share no interior circulation, and are structurally independent, are considered separate buildings for the purpose of measuring building width.
- A building on a corner lot within the build-to zone area of overlap is allowed to exceed the maximum building width by up to 40 feet along both primary street lot lines and side street lot lines.

## SEC. 2A.1.3. FORM DISTRICT DIAGRAMS

### A. General

Diagrams and illustrations within this *Article (Form)* are provided to assist users in understanding the intent and requirements of the text. In the event a conflict occurs between the text of this *Article (Form)* and any illustration or graphic, the text prevails.

### B. Lot Parameter Diagrams



#### 1. Lot Boundary

This line represents the perimeter of the subject lot, serving as a reference for both lot area and lot width.

#### 2. Buildable Area

This shape represents the area on a lot where buildings are allowed, reduced by required building setbacks, or the lot boundary when no setback is required.

#### 3. Building Setbacks

The area between a lot boundary and the minimum required setback, represented with a dotted white line and bounded by the buildable area.

#### 4. Building Coverage

This shape represents the total building coverage allowed in proportion to the lot area, but does not reflect any requirement as to the location or configuration of any buildings or structures.

#### 5. Lot Amenity Space

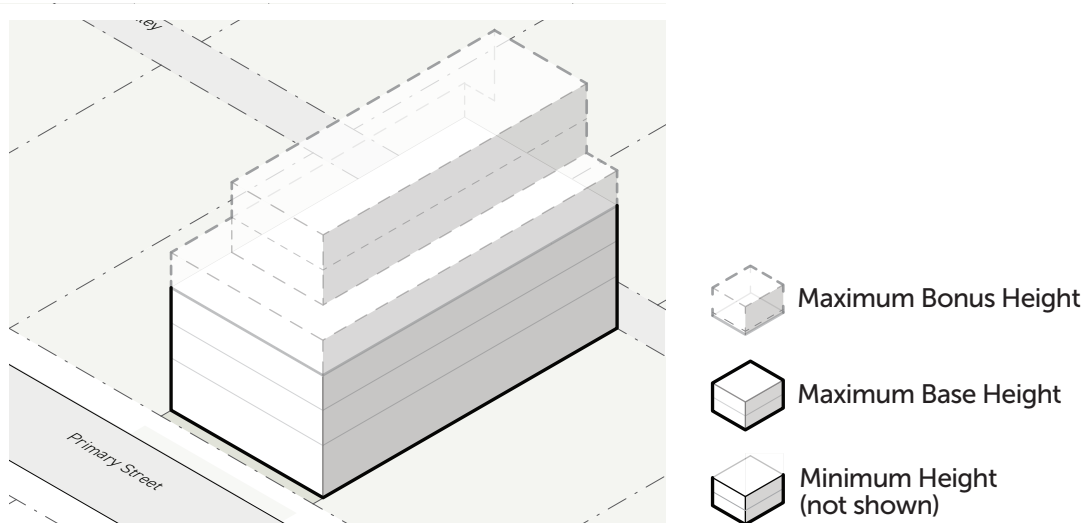
This shape represents the total lot amenity space required in proportion to the lot area, but does not reflect any requirement as to the location or configuration of any amenity space.

## C. Bulk and Mass Diagrams

### 1. General

- a. Bulk and mass diagrams represent the volume where a building is allowed to be located by showing the maximum height allowed for the entire buildable area. The volume does not represent the massing of an allowed building. Other standards, such as maximum building coverage and floor area ratio (FAR), may limit the ability for a building to fill the full volume.
- b. *Form Districts (Part 2B.)* that include a maximum height standard and those that do not include a height limit are represented differently in the bulk and mass diagram.

### 2. Districts with a Maximum Height Standard



#### a. Maximum Bonus Height

Maximum bonus height represents the maximum number of stories allowed beyond the number of stories allowed by the maximum base height in stories.

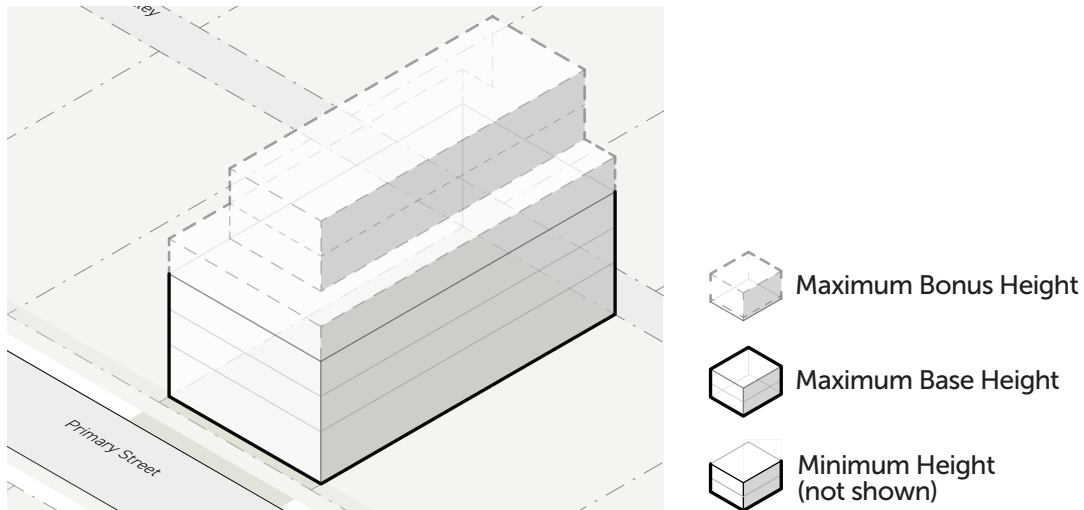
#### b. Maximum Base Height

Maximum base height represents the number of stories allowed without providing public benefits in trade for additional height according to *Article 9. (Public Benefit Systems)*.

#### c. Minimum Height

Minimum height represents the lowest number of stories required.

### 3. Districts with no Maximum Height Standard



#### a. Unlimited Height

This volume represents the building height allowed, in addition to the likely height of the building based on maximum Base FAR.

#### b. Likely Height Based on Bonus FAR

This volume represents the likely building height based on the maximum allowed bonus FAR, in addition to the likely height of the building based on maximum base FAR.

#### c. Likely Height Based on Base FAR

This volume represents the likely building height based on the maximum allowed base FAR, in addition to the minimum required height of the building.

#### d. Minimum Height

This volume represents the minimum number of stories required.

## SEC. 2A.1.4. **FORM DISTRICT NAMING CONVENTION**

There are three different types of naming conventions for *Form Districts (Part 2B.)*. Each Form District name is composed of a variety of components that are specific to that district.

### A. **Rural & Estate Form Districts**

[Reserved]

### B. **House Form Districts**

[Reserved]

### C. **All Other Form Districts**

All other Form District names are composed of three components:

#### 1. **FAR Category**

The first component of each Form District name is a floor area ratio (FAR) category. FAR categories group all districts within a range of maximum allowed FAR. FAR categories are organized as follows:

- a. Very Low-Rise (>0.65-1.5 FAR)
- b. Low-Rise (>1.5-4.0 FAR)
- c. Mid-Rise (>4.0-6.0 FAR)
- d. Moderate-Rise (>6.0-8.5 FAR)
- e. High-Rise (>8.5-13.0 FAR)

#### 2. **Building Width Category**

The second component of each Form District name is a building width category. Building width categories group all districts within a range of maximum allowed building width. Each building width category is organized as follows:

- a. Narrow (25 feet - 75 feet)
- b. Medium (100 feet - 210 feet)
- c. Broad (280 feet - 490 feet)
- d. Full (no building width maximum)

#### 3. **Variation Number**

The last component of each Form District is a variation number. All Form Districts are numbered in the order they fall within this *Article (Form)*.

#### 4. Example Form District

Potential Form District categories are shown below to illustrate the naming convention that would be applied to new Form Districts that may be added to this *Article (Form)* through future code amendments.

**VARIATION #**

**Low-Rise Medium 2 (LM2)**

**FAR**

**BUILDING WIDTH**

	NARROW 25'-75'	MEDIUM 100'-210'	BROAD 280'-490'	FULL N/A
VERY LOW 0.66-1.5 FAR	●	●	○	●
LOW 1.6-4.0 FAR	●	●	○	●
MID 4.1-6.0 FAR	●	●	●	●
MODERATE 6.1-8.5 FAR	○	●	○	○
HIGH 8.6-13.0 FAR	○	●	●	○

○ Potential Form District Category  
● Form District Category

## DIV. 2A.2. **GENERAL RULES**

### SEC. 2A.2.1. **FORM**

This *Article (Form)* regulates the placement, scale, and intensity of buildings and structures on a lot in order to ensure building forms are compatible with their context and promote projects that support community goals.

### SEC. 2A.2.2. **FORM APPLICABILITY**

#### A. **General**

All projects filed after the effective date of this Zoning Code (Chapter 1A) shall comply with the Form District standards in this *Article (Form)*, as further specified in the applicability statement of each Section in *Part 2C. (Form Rules)*. Form District standards only apply to the project activities listed in each Section's applicability statement in *Part 2C. (Form Rules)*. For vested rights, see Sec. 1.4.5. (*Vested Rights*), and for continuance of existing development, see Sec. 1.4.6. (*Continuance of Existing Development*).

#### B. **Applicable Components of Lots, Buildings, & Structures**

Unless otherwise provided, *Form District (Part 2B.)* standards apply to all portions of a lot and all buildings and structures on a lot.

#### C. **Nonconformities**

*Article 12. (Nonconformities)* may provide relief from the requirements of this *Article (Form)* for existing lots, site improvements, buildings, structures, and uses that conformed to the zoning regulations, at the time they were established, but do not conform to current district standards or use permissions. All project activities shall conform with *Form District (Part 2B.)* standards unless otherwise specified by *Div. 12.2. (Form Exceptions)*.

## PART 2B. FORM DISTRICTS

<b>Div. 2B.1. Rural Form Districts . . . . .</b>	<b>2-14</b>
<b>Div. 2B.2. Estate Form Districts . . . . .</b>	<b>2-14</b>
<b>Div. 2B.3. House Form Districts . . . . .</b>	<b>2-14</b>
<b>Div. 2B.4. Very Low-Rise Narrow Form Districts . . . . .</b>	<b>2-14</b>
<b>Div. 2B.5. Very Low-Rise Medium Form Districts . . . . .</b>	<b>2-14</b>
<b>Div. 2B.6. Very Low-Rise Broad Form Districts . . . . .</b>	<b>2-14</b>
<b>Div. 2B.7. Very Low-Rise Full Form Districts . . . . .</b>	<b>2-15</b>
Sec. 2B.7.1. Very Low-Rise Full 1 (VF1) . . . . .	2-15
<b>Div. 2B.8. Low-Rise Narrow Form Districts . . . . .</b>	<b>2-16</b>
Sec. 2B.8.1. Low-Rise Narrow 1 (LN1) . . . . .	2-16
<b>Div. 2B.9. Low-Rise Medium Form Districts. . . . .</b>	<b>2-17</b>
Sec. 2B.9.1. Low-Rise Medium 1 (LM1). . . . .	2-17
Sec. 2B.9.2. Low-Rise Medium 2 (LM2) . . . . .	2-18
<b>Div. 2B.10. Low-Rise Broad Form Districts . . . . .</b>	<b>2-19</b>
Sec. 2B.10.1. Low-Rise Broad 1 (LB1) . . . . .	2-19
Sec. 2B.10.2. Low-Rise Broad 2 (LB2) . . . . .	2-20
<b>Div. 2B.11. Low-Rise Full Form Districts . . . . .</b>	<b>2-21</b>
Sec. 2B.11.1. Low-Rise Full 1 (LF1) . . . . .	2-21
Sec. 2B.11.2. Low-Rise Full 2 (LF2). . . . .	2-22
<b>Div. 2B.12. Mid-Rise Narrow Form Districts . . . . .</b>	<b>2-23</b>
Sec. 2B.12.1. Mid-Rise Narrow 1 (MN1) . . . . .	2-23
<b>Div. 2B.13. Mid-Rise Medium Form Districts . . . . .</b>	<b>2-24</b>
Sec. 2B.13.1. Mid-Rise Medium 1 (MM1). . . . .	2-24
<b>Div. 2B.14. Mid-Rise Broad Form Districts . . . . .</b>	<b>2-25</b>
Sec. 2B.14.1. Mid-Rise Broad 1 (MB1) . . . . .	2-25
Sec. 2B.14.2. Mid-Rise Broad 2 (MB2) . . . . .	2-26
<b>Div. 2B.15. Mid-Rise Full Form Districts . . . . .</b>	<b>2-27</b>



<b>Div. 2B.16. Moderate-Rise Medium Form Districts . . . . .</b>	<b>2-28</b>
Sec. 2B.16.1. Moderate-Rise Medium 1 (DM1) . . . . .	2-28
Sec. 2B.16.2. Moderate-Rise Medium 2 (DM2) . . . . .	2-29
Sec. 2B.16.3. Moderate-Rise Medium 3 (DM3) . . . . .	2-30
Sec. 2B.16.4. Moderate-Rise Medium 4 (DM4) . . . . .	2-31
Sec. 2B.16.5. Moderate-Rise Medium 5 (DM5) . . . . .	2-32
<b>Div. 2B.17. Moderate-Rise Broad Form Districts. . . . .</b>	<b>2-33</b>
<b>Div. 2B.18. Moderate-Rise Full Form Districts . . . . .</b>	<b>2-34</b>
Sec. 2B.18.1. Moderate-Rise Full 1 (DF1) . . . . .	2-34
<b>Div. 2B.19. High-Rise Medium Form Districts . . . . .</b>	<b>2-35</b>
Sec. 2B.19.1. High-Rise Medium 1 (HM1) . . . . .	2-35
Sec. 2B.19.2. High-Rise Medium 2 (HM2) . . . . .	2-36
<b>Div. 2B.20. High-Rise Broad Form Districts. . . . .</b>	<b>2-37</b>
Sec. 2B.20.1. High-Rise Broad 1 (HB1) . . . . .	2-37
Sec. 2B.20.2. High-Rise Broad 2 (HB2) . . . . .	2-38
Sec. 2B.20.3. High-Rise Broad 3 (HB3) . . . . .	2-39
Sec. 2B.20.4. High-Rise Broad 4 (HB4) . . . . .	2-40
Sec. 2B.20.5. High-Rise Broad 5 (HB5) . . . . .	2-41
Sec. 2B.20.6. High-Rise Broad 6 (HB6) . . . . .	2-42
<b>Div. 2B.21. High-Rise Full Form Districts . . . . .</b>	<b>2-43</b>

DIV. 2B.1. **RURAL FORM DISTRICTS**

[Reserved].

DIV. 2B.2. **ESTATE FORM DISTRICTS**

[Reserved].

DIV. 2B.3. **HOUSE FORM DISTRICTS**

[Reserved].

DIV. 2B.4. **VERY LOW-RISE NARROW FORM DISTRICTS**

[Reserved].

DIV. 2B.5. **VERY LOW-RISE MEDIUM FORM DISTRICTS**

[Reserved].

DIV. 2B.6. **VERY LOW-RISE BROAD FORM DISTRICTS**

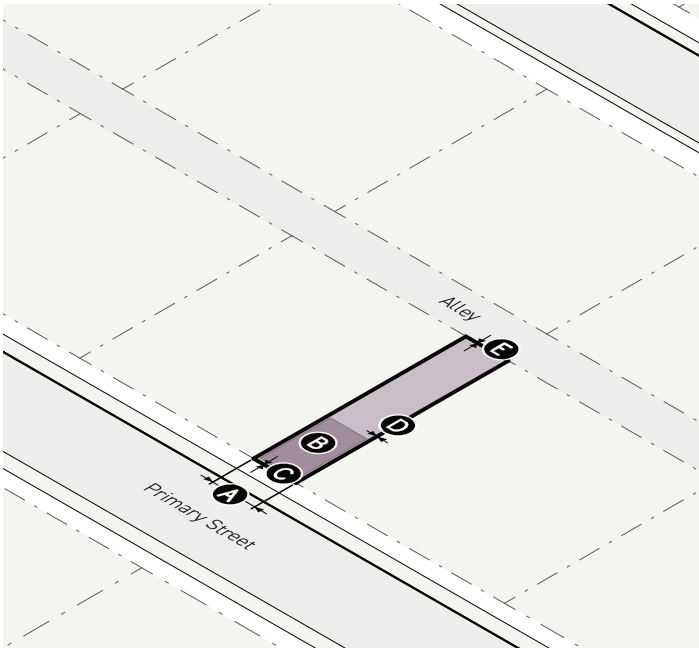
[Reserved].

## DIV. 2B.7. VERY LOW-RISE FULL FORM DISTRICTS

Pursuant to Sec. 2A.1.4. (Form District Naming Convention), each Very Low-Rise Full Form District has a maximum FAR ranging from 0.66 to 1.5, and no maximum building width.

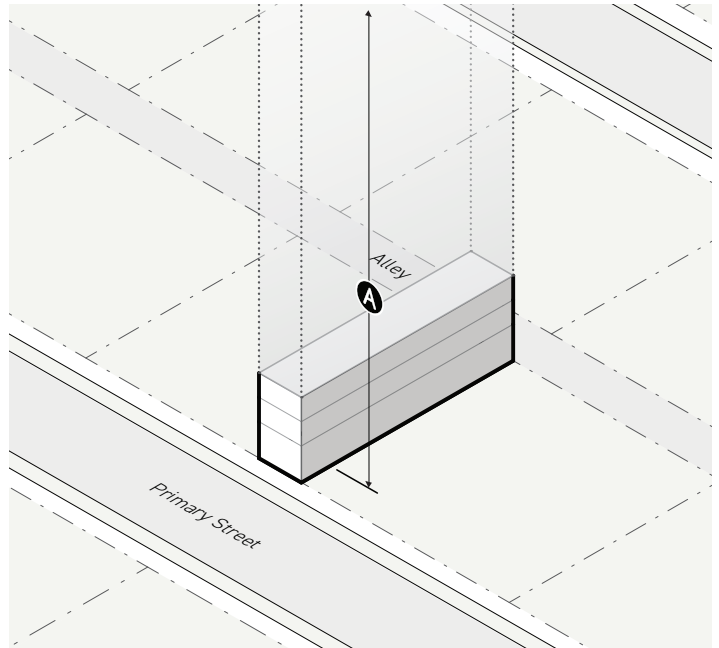
### SEC. 2B.7.1. VERY LOW-RISE FULL 1 (VF1)

#### A. Lot Parameters



1. LOT SIZE	Div. 2C.1.
Lot area (min)	None
<b>A</b> Lot width (min)	20'
2. COVERAGE	Div. 2C.2.
<b>B</b> Building coverage (max)	25%
Building setbacks	
<b>C</b> Primary street (min)	0'
Side street (min)	0'
<b>D</b> Side (min)	0'
Rear (min)	0'
<b>E</b> Alley (min)	0'
Special: River (min)	10'
Special: Other (min)	0'
3. AMENITY	Div. 2C.3.
Not applicable	

#### B. Bulk and Mass



1. FAR & HEIGHT	Div. 2C.4.
Floor area ratio (FAR)	
Base (max)	1.5
Bonus (max)	None
<b>A</b> Height (max)	None
2. BUILDING MASS	Div. 2C.5.
Not applicable	
3. UPPER-STORY BULK	Div. 2C.6.
Not applicable	

## DIV. 2B.8. LOW-RISE NARROW FORM DISTRICTS

Pursuant to Sec. 2A.1.4. (Form District Naming Convention), each Low-Rise Narrow Form District has a maximum FAR ranging from 1.6 to 4.0, and a maximum building width ranging from 25 to 75 feet.

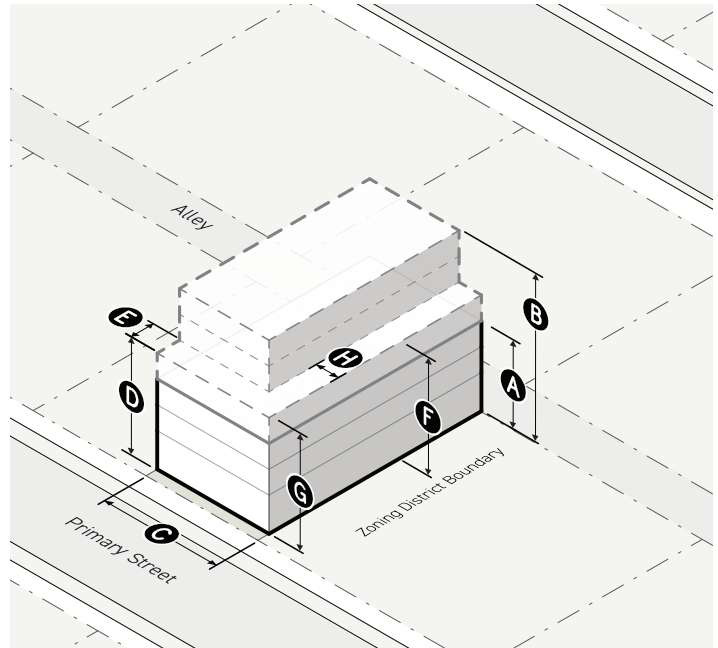
### SEC. 2B.8.1. LOW-RISE NARROW 1 (LN1)

#### A. Lot Parameters



1. LOT SIZE <span>Div. 2C.1.</span>	
<b>A</b> Lot area (min)	2,500 sf
<b>B</b> Lot width (min)	25'
2. COVERAGE <span>Div. 2C.2.</span>	
<b>C</b> Building coverage (max)	80%
Building setbacks	
<b>D</b> Primary street (min)	5'
Side street (min)	0'
<b>E</b> Side (min)	0'
Rear (min)	0'
<b>F</b> Alley (min)	0'
Special: All (min)	0'
3. AMENITY <span>Div. 2C.3.</span>	
<b>G</b> Lot amenity space (min)	25%
Residential amenity space (min)	10%

#### B. Bulk and Mass



1. FAR & HEIGHT <span>Div. 2C.4.</span>	
Floor area ratio (FAR)	
Base (max)	1.5
Bonus (max)	3.0
Height in stories	
<b>A</b> Base (max)	3
<b>B</b> Bonus (max)	6
2. BUILDING MASS <span>Div. 2C.5.</span>	
<b>C</b> Building width (max)	75'
Building break (min)	6'
3. UPPER-STORY BULK <span>Div. 2C.6.</span>	
Street step-back	
<b>D</b> Stories without step-back (max)	4
<b>E</b> Primary street step-back depth (min)	10'
Side street step-back depth (min)	10'
District boundary height transition	
<b>F</b> Abutting district allowed height (max)	45'
<b>G</b> Stories without height transition (max)	4
<b>H</b> Transition depth (min)	10'

## DIV. 2B.9. LOW-RISE MEDIUM FORM DISTRICTS

Pursuant to Sec. 2A.1.4. (Form District Naming Convention), each Low-Rise Medium Form District has a maximum FAR ranging from 1.6 to 4.0, and a maximum building width ranging from 100 to 210 feet.

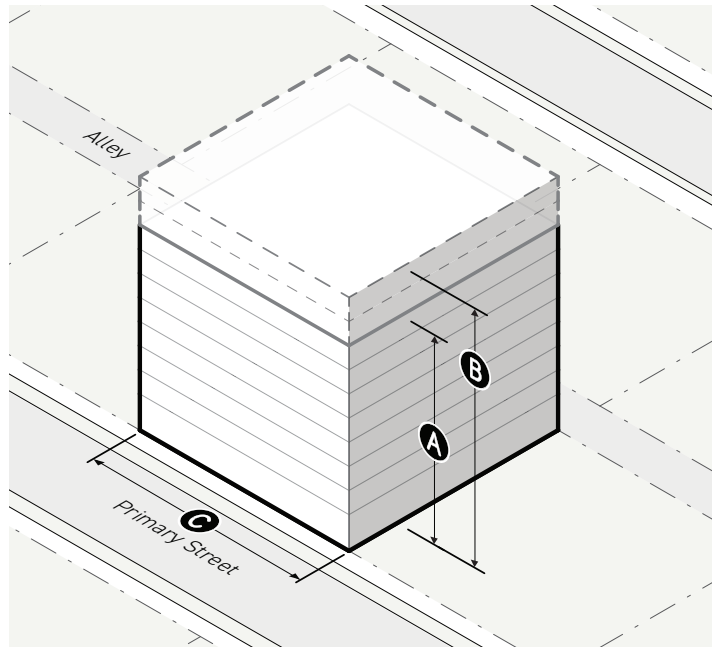
### SEC. 2B.9.1. LOW-RISE MEDIUM 1 (LM1)

#### A. Lot Parameters



1. LOT SIZE	Div. 2C.1.
Lot area (min)	None
<b>A</b> Lot width (min)	25'
2. COVERAGE	Div. 2C.2.
<b>B</b> Building coverage (max)	100%
Building setbacks	
<b>C</b> Primary street (min)	0'
Side street (min)	0'
<b>D</b> Side (min)	0'
Rear (min)	0'
<b>E</b> Alley (min)	0'
Special: All (min)	0'
3. AMENITY	Div. 2C.3.
<b>F</b> Lot amenity space (min)	15%
Residential amenity space (min)	10%

#### B. Bulk and Mass



1. FAR & HEIGHT	Div. 2C.4.
Floor area ratio (FAR)	
Base (max)	1.5
Bonus (max)	3.0
Height in stories	
<b>A</b> Base (max)	8
<b>B</b> Bonus (max)	10
2. BUILDING MASS	Div. 2C.5.
<b>C</b> Building width (max)	160'
Building break (min)	15'
3. UPPER-STORY BULK	Div. 2C.6.
Not applicable	

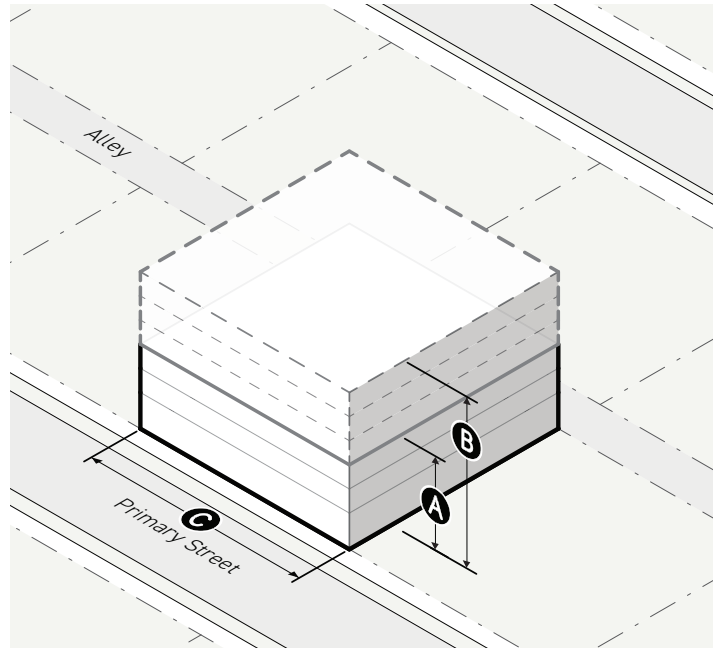
## SEC. 2B.9.2. LOW-RISE MEDIUM 2 (LM2)

### A. Lot Parameters



1. LOT SIZE <span style="float: right;">Div. 2C.1.</span>	
<b>A</b> Lot area (min)	2,500 sf
<b>B</b> Lot width (min)	25'
2. COVERAGE <span style="float: right;">Div. 2C.2.</span>	
<b>C</b> Building coverage (max)	90%
Building setbacks	
<b>D</b> Primary street (min)	0'
Side street (min)	0'
<b>E</b> Side (min)	0'
Rear (min)	0'
<b>F</b> Alley (min)	0'
Special: All (min)	0'
3. AMENITY <span style="float: right;">Div. 2C.3.</span>	
<b>G</b> Lot amenity space (min)	25%
Residential amenity space (min)	10%

### B. Bulk and Mass



1. FAR & HEIGHT <span style="float: right;">Div. 2C.4.</span>	
Floor area ratio (FAR)	
Base (max)	1.5
Bonus (max)	3.0
Height in stories	
<b>A</b> Base (max)	3
<b>B</b> Bonus (max)	6
2. BUILDING MASS <span style="float: right;">Div. 2C.5.</span>	
<b>C</b> Building width (max)	100'
Building break (min)	15'
3. UPPER-STORY BULK <span style="float: right;">Div. 2C.6.</span>	
Not applicable	

## DIV. 2B.10. LOW-RISE BROAD FORM DISTRICTS

Pursuant to Sec. 2A.1.4. (Form District Naming Convention), each Low-Rise Broad Form District has a maximum FAR ranging from 1.6 to 4.0, and a maximum building width ranging from 280 to 490 feet.

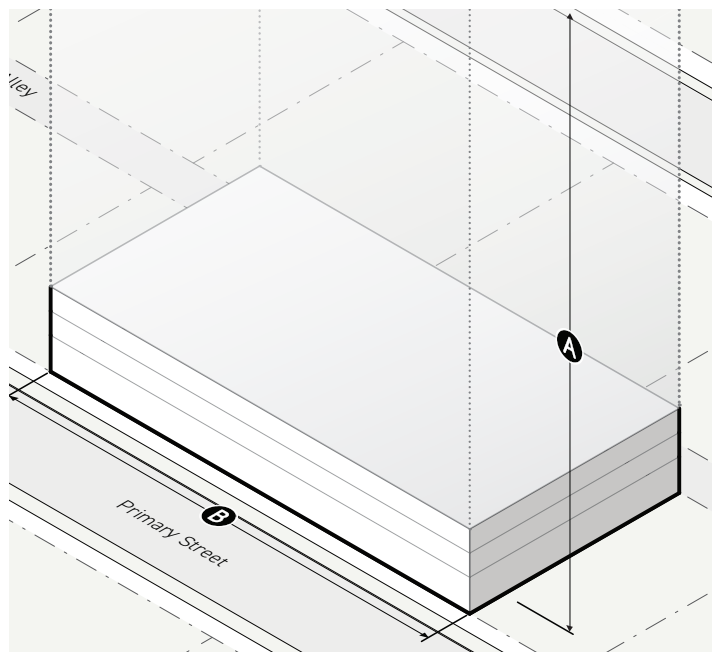
### SEC. 2B.10.1. LOW-RISE BROAD 1 (LB1)

#### A. Lot Parameters



1. LOT SIZE <span>Div. 2C.1.</span>	
Lot area (min)	None
<b>A</b> Lot width (min)	25'
2. COVERAGE <span>Div. 2C.2.</span>	
<b>B</b> Building coverage (max)	90%
Building setbacks	
<b>C</b> Primary street (min)	0'
Side street (min)	0'
<b>D</b> Side (min)	0'
Rear (min)	0'
<b>E</b> Alley (min)	0'
Special: All (min)	0'
3. AMENITY <span>Div. 2C.3.</span>	
<b>F</b> Lot amenity space (min)	15%
Residential amenity space (min)	10%

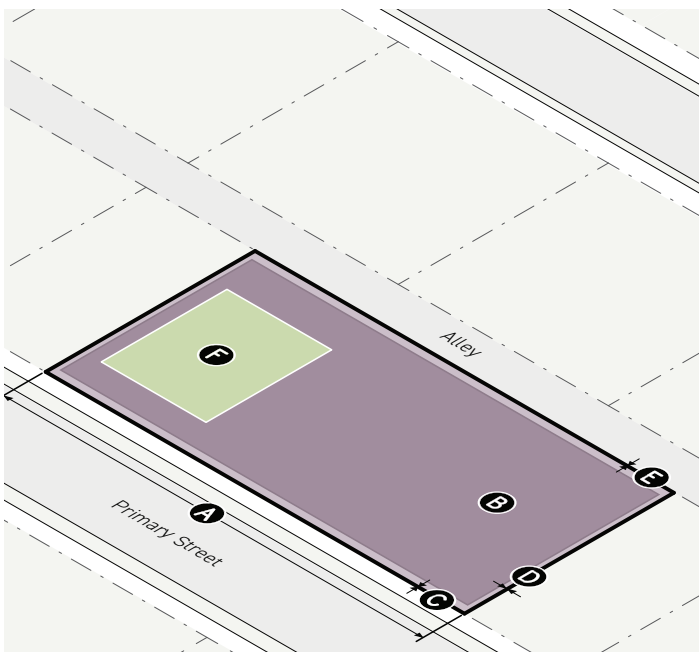
#### B. Bulk and Mass



1. FAR & HEIGHT <span>Div. 2C.4.</span>	
Floor area ratio (FAR)	
Base (max)	3.0
Bonus (max)	None
<b>A</b> Height (max)	None
2. BUILDING MASS <span>Div. 2C.5.</span>	
<b>B</b> Building width (max)	350'
Building break (min)	25'
3. UPPER-STORY BULK <span>Div. 2C.6.</span>	
Not applicable	

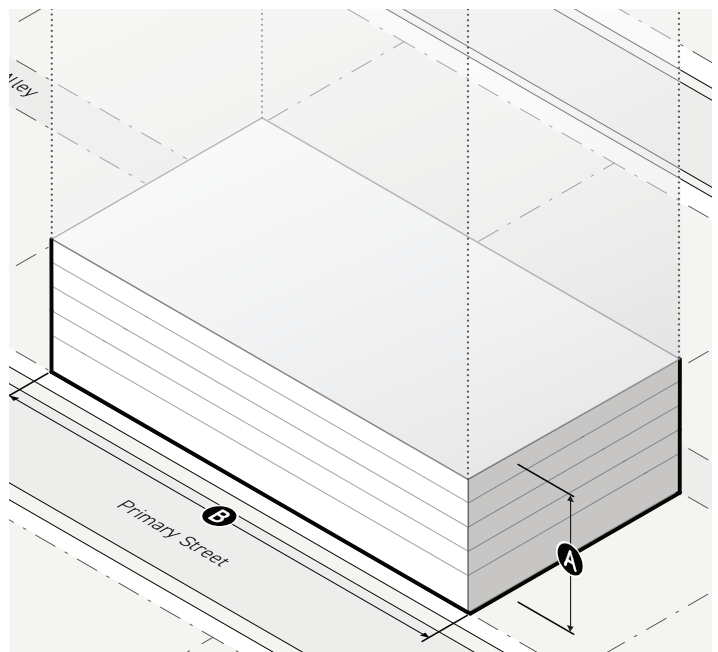
## SEC. 2B.10.2. LOW-RISE BROAD 2 (LB2)

### A. Lot Parameters



1. LOT SIZE <span style="float: right;">Div. 2C.1.</span>	
Lot area (min)	None
<b>A</b> Lot width (min)	25'
2. COVERAGE <span style="float: right;">Div. 2C.2.</span>	
<b>B</b> Building coverage (max)	90%
Building setbacks	
<b>C</b> Primary street (min)	0'
Side street (min)	0'
<b>D</b> Side (min)	0'
Rear (min)	0'
<b>E</b> Alley (min)	0'
Special: River (min)	10'
Special: Other (min)	0'
3. AMENITY <span style="float: right;">Div. 2C.3.</span>	
<b>F</b> Lot amenity space (min)	15%
Residential amenity space (min)	10%

### B. Bulk and Mass



1. FAR & HEIGHT <span style="float: right;">Div. 2C.4.</span>	
Floor area ratio (FAR)	
Base (max)	1.5
Bonus (max)	3.0
Height in stories	
<b>A</b> Base (max)	5
Bonus (max)	None
2. BUILDING MASS <span style="float: right;">Div. 2C.5.</span>	
<b>B</b> Building width (max)	280'
Building break (min)	25'
3. UPPER-STORY BULK <span style="float: right;">Div. 2C.6.</span>	
Not applicable	

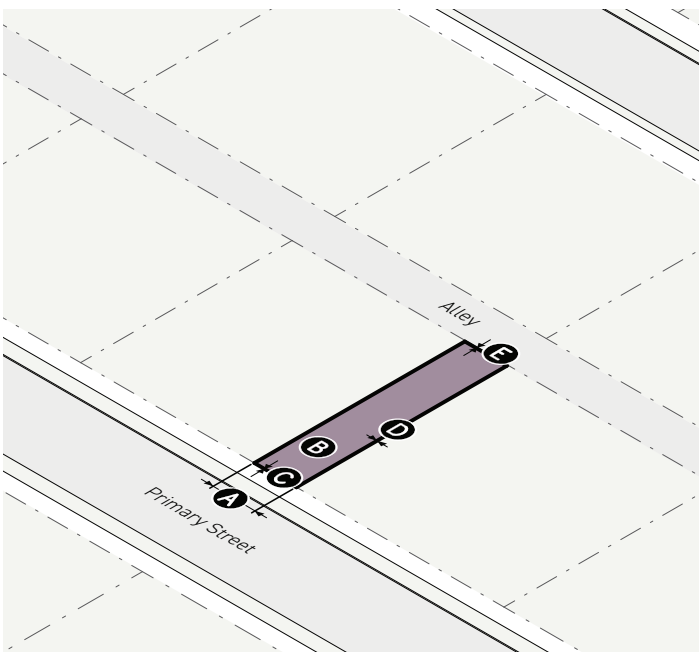


## DIV. 2B.11. LOW-RISE FULL FORM DISTRICTS

Pursuant to Sec. 2A.1.4. (Form District Naming Convention), each Low-Rise Full Form District has a maximum FAR ranging from 1.6 to 4.0, and no maximum building width.

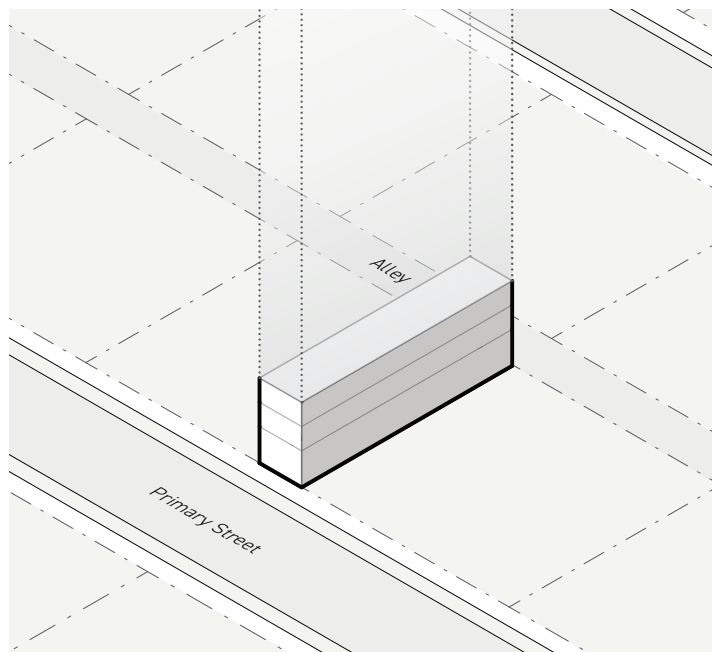
### SEC. 2B.11.1. LOW-RISE FULL 1 (LF1)

#### A. Lot Parameters



1. LOT SIZE <span>Div. 2C.1.</span>	
Lot area (min)	None
<b>A</b> Lot width (min)	20'
2. COVERAGE <span>Div. 2C.2.</span>	
<b>B</b> Building coverage (max)	100%
Building setbacks	
<b>C</b> Primary street (min)	0'
Side street (min)	0'
<b>D</b> Side (min)	0'
Rear (min)	0'
<b>E</b> Alley (min)	0'
Special: All (min)	0'
3. AMENITY <span>Div. 2C.3.</span>	
Not applicable	

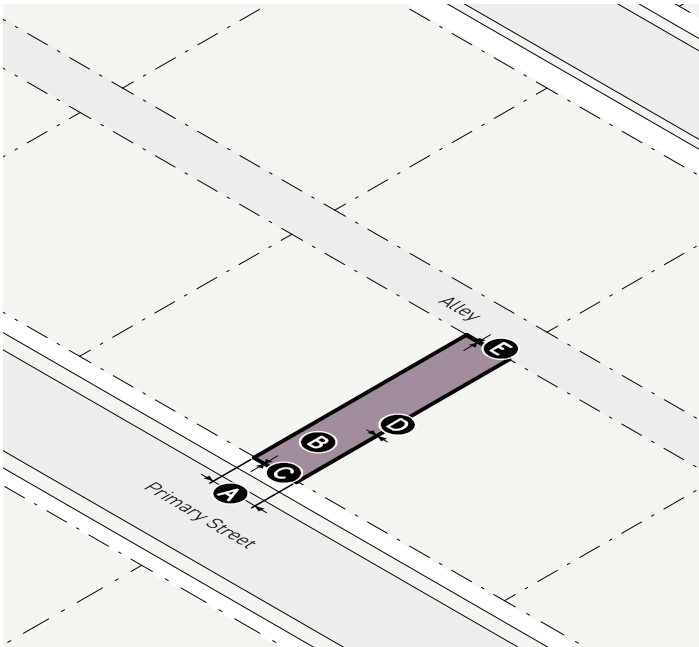
#### B. Bulk and Mass



1. FAR & HEIGHT <span>Div. 2C.4.</span>	
Floor area ratio (FAR)	
Base (max)	3.0
Bonus (max)	None
City Hall Height Restriction	Yes
2. BUILDING MASS <span>Div. 2C.5.</span>	
Not applicable	
3. UPPER-STORY BULK <span>Div. 2C.6.</span>	
Not applicable	

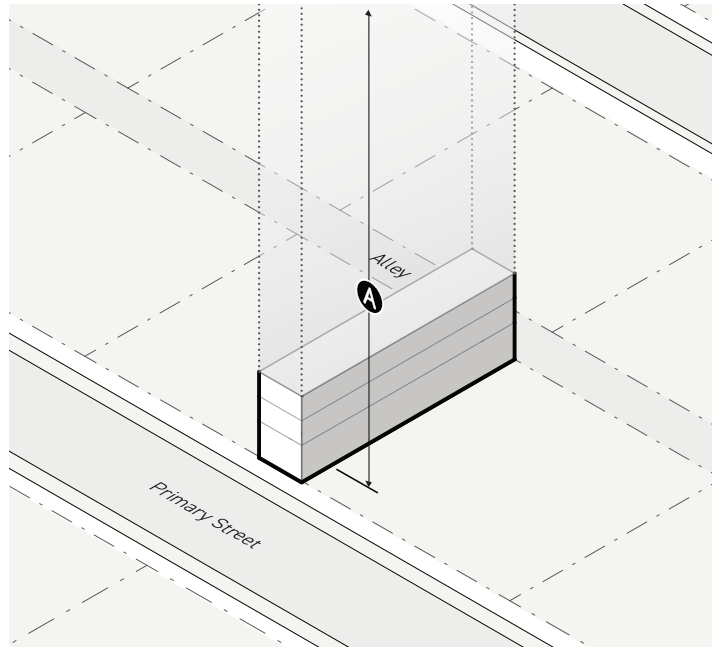
## SEC. 2B.11.2. LOW-RISE FULL 2 (LF2)

### A. Lot Parameters



1. LOT SIZE <span>Div. 2C.1.</span>	
Lot area (min)	None
<b>A</b> Lot width (min)	20'
2. COVERAGE <span>Div. 2C.2.</span>	
<b>B</b> Building coverage (max)	100%
Building setbacks	
<b>C</b> Primary street (min)	0'
Side street (min)	0'
<b>D</b> Side (min)	0'
Rear (min)	0'
<b>E</b> Alley (min)	0'
Special: River (min)	10'
Special: Other (min)	0'
3. AMENITY <span>Div. 2C.3.</span>	
Not applicable	

### B. Bulk and Mass



1. FAR & HEIGHT <span>Div. 2C.4.</span>	
Floor area ratio (FAR)	
Base (max)	3.0
Bonus (max)	None
<b>A</b> Height (max)	None
2. BUILDING MASS <span>Div. 2C.5.</span>	
Not applicable	
3. UPPER-STORY BULK <span>Div. 2C.6.</span>	
Not applicable	

## DIV. 2B.12. MID-RISE NARROW FORM DISTRICTS

Pursuant to Sec. 2A.1.4. (*Form District Naming Convention*), each Mid-Rise Narrow Form District has a maximum FAR ranging from 4.1 to 6.0, and a maximum building width ranging from 25 to 75 feet.

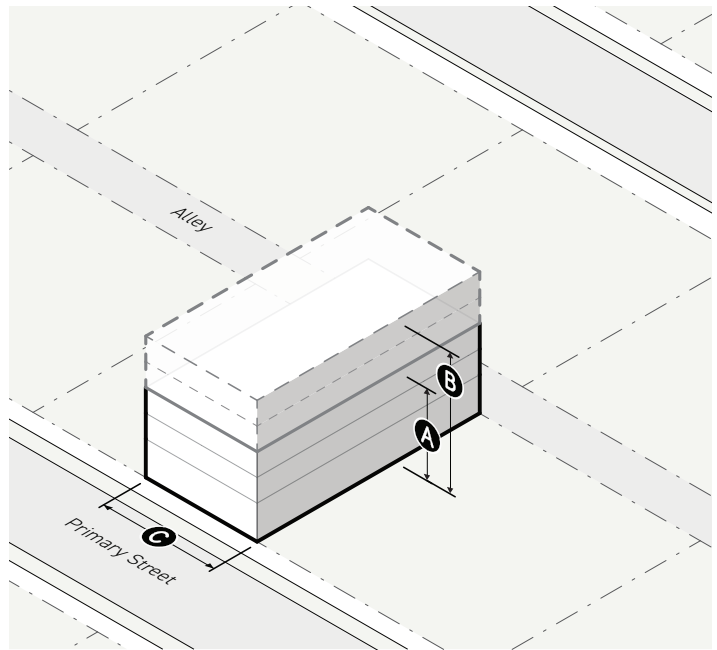
### SEC. 2B.12.1. MID-RISE NARROW 1 (MN1)

#### A. Lot Parameters



1. LOT SIZE	Div. 2C.1.
Lot area (min)	None
<b>A</b> Lot width (min)	25'
2. COVERAGE	Div. 2C.2.
<b>B</b> Building coverage (max)	100%
Building setbacks	
<b>C</b> Primary street (min)	0'
Side street (min)	0'
<b>D</b> Side (min)	0'
Rear (min)	0'
<b>E</b> Alley (min)	0'
Special: Alley (min)	0'
Special: Other (min)	0'
3. AMENITY	Div. 2C.3.
<b>F</b> Lot amenity space (min)	10%
Residential amenity space (min)	10%

#### B. Bulk and Mass



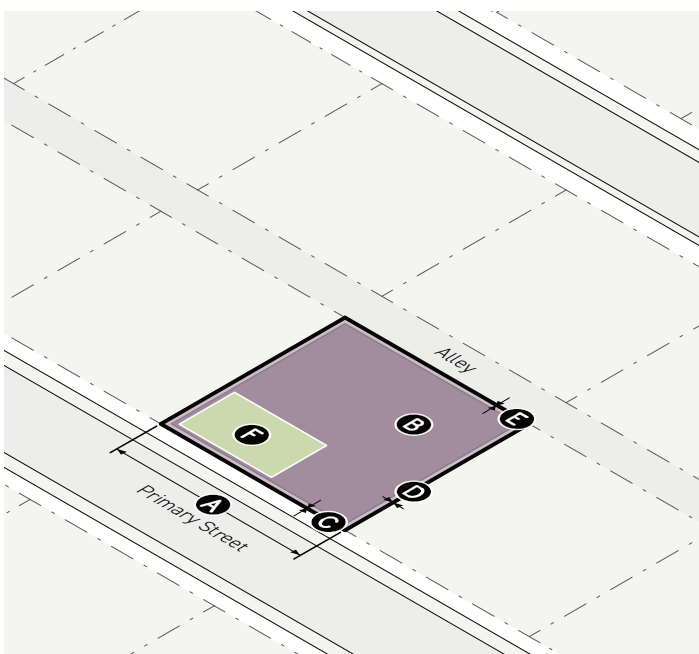
1. FAR & HEIGHT	Div. 2C.4.
Floor area ratio (FAR)	
Base (max)	3.0
Bonus (max)	6.0
Height in stories	
<b>A</b> Base (max)	3
<b>B</b> Bonus (max)	5
2. BUILDING MASS	Div. 2C.5.
<b>C</b> Building width (max)	75'
Building break (min)	6'
3. UPPER-STORY BULK	Div. 2C.6.
Not applicable	

## DIV. 2B.13. MID-RISE MEDIUM FORM DISTRICTS

Pursuant to Sec. 2A.1.4. (*Form District Naming Convention*), each Mid-Rise Medium Form District has a maximum FAR ranging from 4.1 to 6.0, and a maximum building width ranging from 100 to 210 feet.

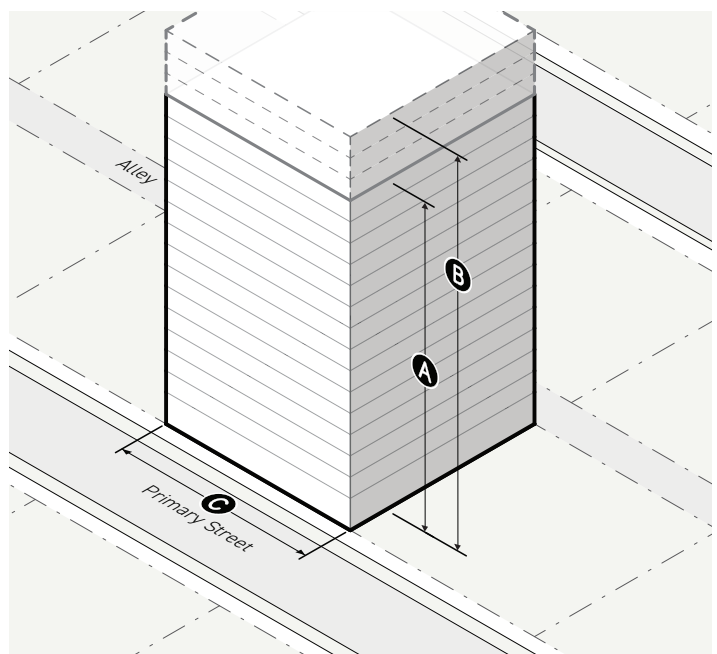
### SEC. 2B.13.1. MID-RISE MEDIUM 1 (MM1)

#### A. Lot Parameters



1. LOT SIZE <span style="float: right;">Div. 2C.1.</span>	
Lot area (min)	None
<b>A</b> Lot width (min)	25'
2. COVERAGE <span style="float: right;">Div. 2C.2.</span>	
<b>B</b> Building coverage (max)	90%
Building setbacks	
<b>C</b> Primary street (min)	0'
Side street (min)	0'
<b>D</b> Side (min)	0'
Rear (min)	0'
<b>E</b> Alley (min)	0'
Special: River (min)	10'
Special: Other (min)	0'
3. AMENITY <span style="float: right;">Div. 2C.3.</span>	
<b>F</b> Lot amenity space (min)	15%
Residential amenity space (min)	10%

#### B. Bulk and Mass



1. FAR & HEIGHT <span style="float: right;">Div. 2C.4.</span>	
Floor area ratio (FAR)	
Base (max)	1.5
Bonus (max)	4.5
Height in stories	
<b>A</b> Base (max)	15
<b>B</b> Bonus (max)	18
2. BUILDING MASS <span style="float: right;">Div. 2C.5.</span>	
<b>C</b> Building width (max)	160'
Building break (min)	15'
3. UPPER-STORY BULK <span style="float: right;">Div. 2C.6.</span>	
Not applicable	

## DIV. 2B.14. MID-RISE BROAD FORM DISTRICTS

Pursuant to Sec. 2A.1.4. (*Form District Naming Convention*), each Mid-Rise Broad Form District has a maximum FAR ranging from 4.1 to 6.0, and a maximum building width ranging from 280 to 490 feet.

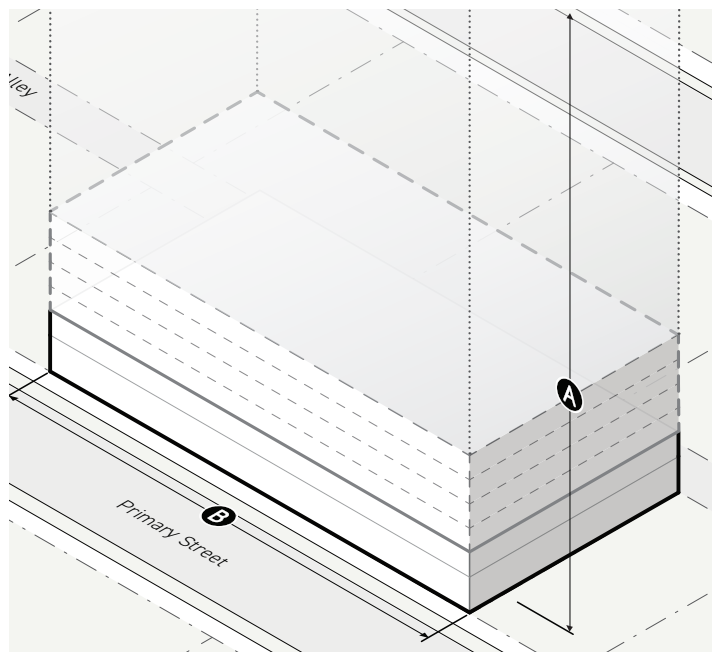
### SEC. 2B.14.1. MID-RISE BROAD 1 (MB1)

#### A. Lot Parameters



1. LOT SIZE <span style="float: right;">Div. 2C.1.</span>	
Lot area (min)	None
<b>A</b> Lot width (min)	25'
2. COVERAGE <span style="float: right;">Div. 2C.2.</span>	
<b>B</b> Building coverage (max)	90%
Building setbacks	
<b>C</b> Primary street (min)	0'
Side street (min)	0'
<b>D</b> Side (min)	0'
Rear (min)	0'
<b>E</b> Alley (min)	0'
Special: All (min)	0'
3. AMENITY <span style="float: right;">Div. 2C.3.</span>	
<b>F</b> Lot amenity space (min)	15%
Residential amenity space (min)	10%

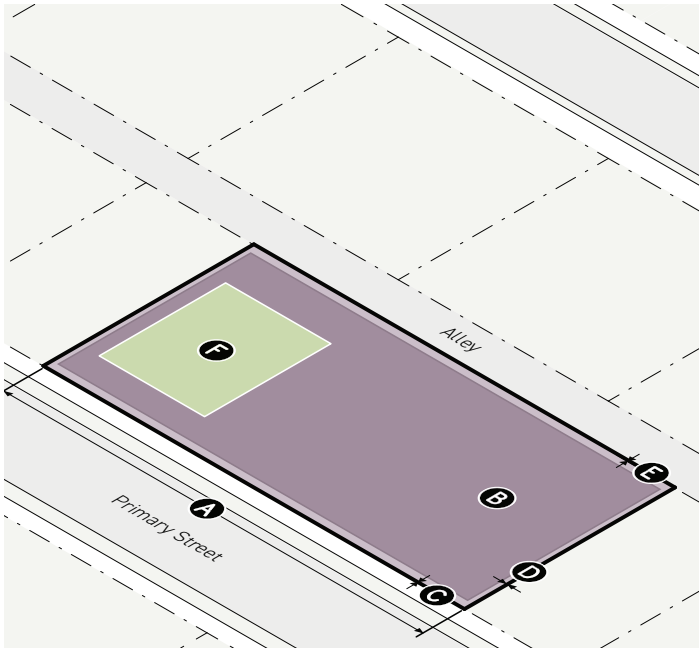
#### B. Bulk and Mass



1. FAR & HEIGHT <span style="float: right;">Div. 2C.4.</span>	
Floor area ratio (FAR)	
Base (max)	1.5
Bonus (max)	6.0
Bonus height in stories (min)	
Residential	10
Predominantly non-residential	n/a
<b>A</b> Height (max)	None
2. BUILDING MASS <span style="float: right;">Div. 2C.5.</span>	
<b>B</b> Building width (max)	280'
Building break (min)	25'
3. UPPER-STORY BULK <span style="float: right;">Div. 2C.6.</span>	
Not applicable	

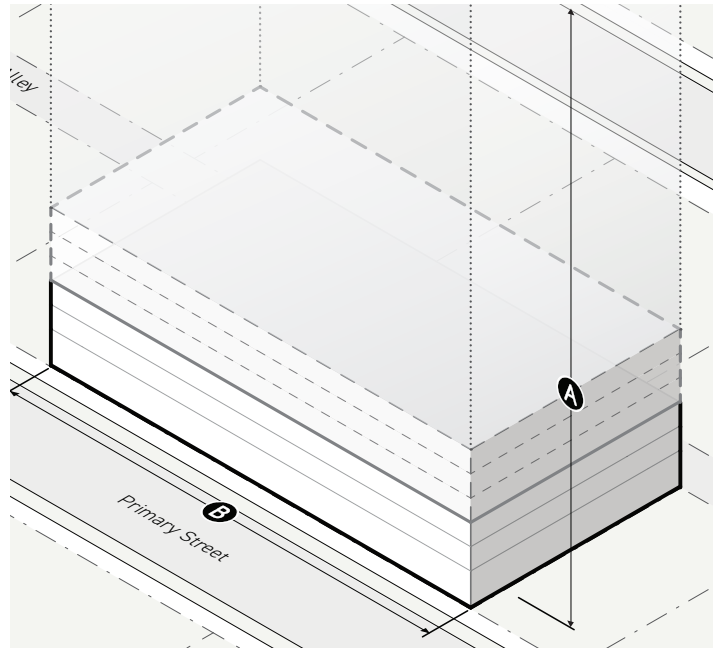
## SEC. 2B.14.2. MID-RISE BROAD 2 (MB2)

### A. Lot Parameters



1. LOT SIZE <span>Div. 2C.1.</span>	
Lot area (min)	None
<b>A</b> Lot width (min)	25'
2. COVERAGE <span>Div. 2C.2.</span>	
<b>B</b> Building coverage (max)	90%
Building setbacks	
<b>C</b> Primary street (min)	0'
Side street (min)	0'
<b>D</b> Side (min)	0'
Rear (min)	0'
<b>E</b> Alley (min)	0'
Special: All (min)	0'
3. AMENITY <span>Div. 2C.3.</span>	
<b>F</b> Lot amenity space (min)	15%
Residential amenity space (min)	10%

### B. Bulk and Mass



1. FAR & HEIGHT <span>Div. 2C.4.</span>	
Floor area ratio (FAR)	
Base (max)	3.0
Bonus (max)	6.0
<b>A</b> Height (max)	None
2. BUILDING MASS <span>Div. 2C.5.</span>	
<b>B</b> Building width (max)	280'
Building break (min)	25'
3. UPPER-STORY BULK <span>Div. 2C.6.</span>	
Not applicable	

## DIV. 2B.15. **MID-RISE FULL FORM DISTRICTS**

Pursuant to *Sec. 2A.1.4. (Form District Naming Convention)*, each Mid-Rise Full Form District has a maximum FAR ranging from 4.1 to 6.0, and no maximum building width.

[Reserved]

## DIV. 2B.16. MODERATE-RISE MEDIUM FORM DISTRICTS

Pursuant to Sec. 2A.1.4. (Form District Naming Convention), each Moderate-Rise Medium Form District has a maximum FAR ranging from 6.1 to 8.5, and a maximum building width ranging from 100 to 210 feet.

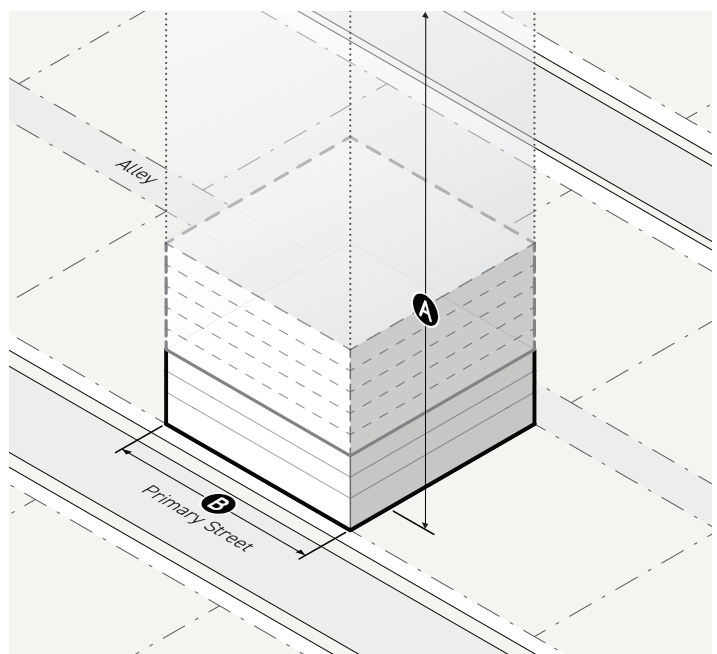
### SEC. 2B.16.1. MODERATE-RISE MEDIUM 1 (DM1)

#### A. Lot Parameters



1. LOT SIZE <span>Div. 2C.1.</span>	
Lot area (min)	None
<b>A</b> Lot width (min)	25'
2. COVERAGE <span>Div. 2C.2.</span>	
<b>B</b> Building coverage (max)	90%
Building setbacks	
<b>C</b> Primary street (min)	0'
Side street (min)	0'
<b>D</b> Side (min)	0'
Rear (min)	0'
<b>E</b> Alley (min)	0'
Special: Alley (min)	0'
Special: Other (min)	0'
3. AMENITY <span>Div. 2C.3.</span>	
<b>F</b> Lot amenity space (min)	15%
Residential amenity space (min)	10%

#### B. Bulk and Mass

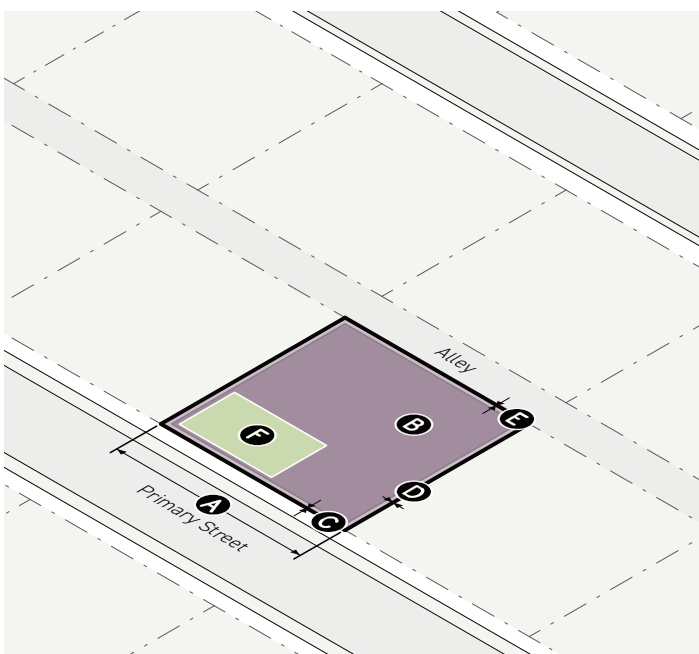


1. FAR & HEIGHT <span>Div. 2C.4.</span>	
Floor area ratio (FAR)	
Base (max)	3.0
Bonus (max)	8.0
<b>A</b> Height (max)	None
2. BUILDING MASS <span>Div. 2C.5.</span>	
<b>B</b> Building width (max)	210'
Building break (min)	15'
3. UPPER-STORY BULK <span>Div. 2C.6.</span>	
Not applicable	



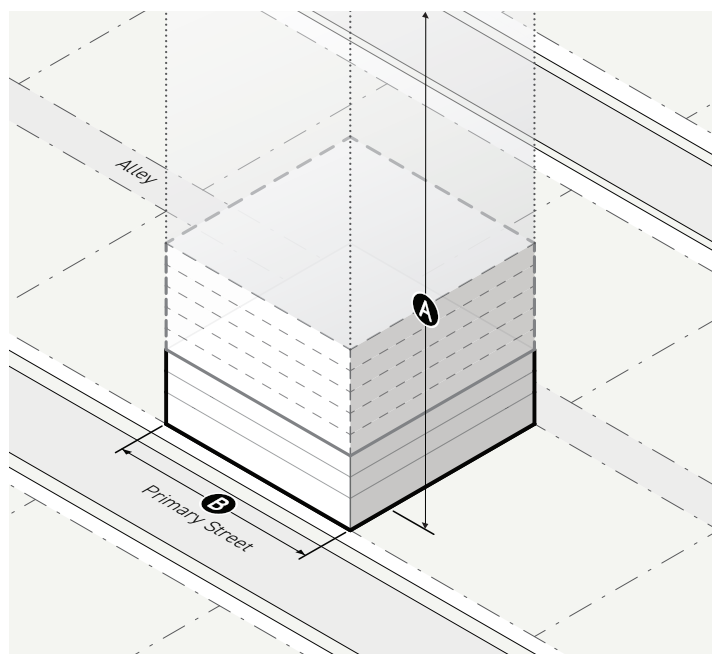
## SEC. 2B.16.2. MODERATE-RISE MEDIUM 2 (DM2)

### A. Lot Parameters



1. LOT SIZE	Div. 2C.1.
Lot area (min)	None
<b>A</b> Lot width (min)	25'
2. COVERAGE	Div. 2C.2.
<b>B</b> Building coverage (max)	90%
Building setbacks	
<b>C</b> Primary street (min)	0'
Side street (min)	0'
<b>D</b> Side (min)	0'
Rear (min)	0'
<b>E</b> Alley (min)	0'
Special: All (min)	0'
3. AMENITY	Div. 2C.3.
<b>F</b> Lot amenity space (min)	15%
Residential amenity space (min)	10%

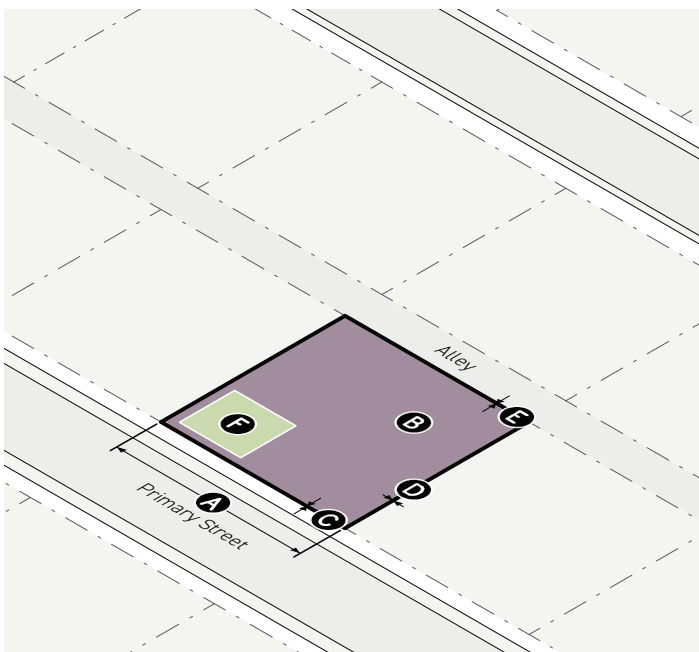
### B. Bulk and Mass



1. FAR & HEIGHT	Div. 2C.4.
Floor area ratio (FAR)	
Base (max)	3.0
Bonus (max)	8.5
<b>A</b> Height (max)	None
2. BUILDING MASS	Div. 2C.5.
<b>B</b> Building width (max)	160'
Building break (min)	15'
3. UPPER-STORY BULK	Div. 2C.6.
Not applicable	

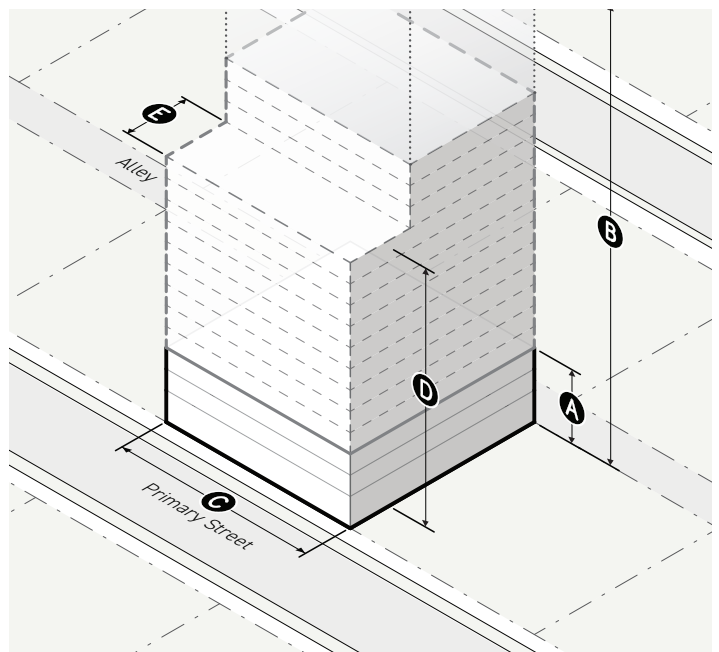
### SEC. 2B.16.3. MODERATE-RISE MEDIUM 3 (DM3)

#### A. Lot Parameters



1. LOT SIZE <span style="float: right;">Div. 2C.1.</span>	
Lot area (min)	None
<b>A</b> Lot width (min)	25'
2. COVERAGE <span style="float: right;">Div. 2C.2.</span>	
<b>B</b> Building coverage (max)	100%
Building setbacks	
<b>C</b> Primary street (min)	0'
Side street (min)	0'
<b>D</b> Side (min)	0'
Rear (min)	0'
<b>E</b> Alley (min)	0'
Special: All (min)	0'
3. AMENITY <span style="float: right;">Div. 2C.3.</span>	
<b>F</b> Lot amenity space (min)	10%
Residential amenity space (min)	10%

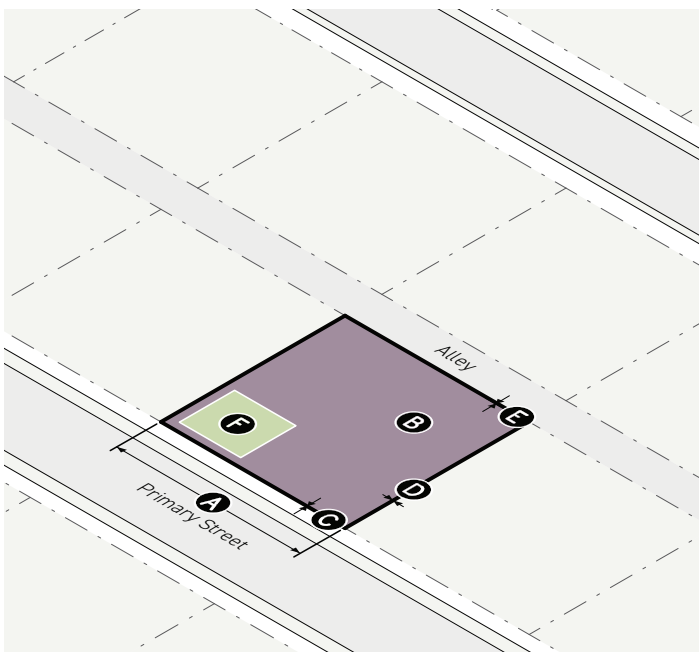
#### B. Bulk and Mass



1. FAR & HEIGHT <span style="float: right;">Div. 2C.4.</span>	
Floor area ratio (FAR)	
Base (max)	3.0
Bonus (max)	8.5
<b>A</b> Height in stories (min)	3
<b>B</b> Height (max)	None
2. BUILDING MASS <span style="float: right;">Div. 2C.5.</span>	
<b>C</b> Building width (max)	160'
Building break (min)	15'
3. UPPER-STORY BULK <span style="float: right;">Div. 2C.6.</span>	
Street step-back	
<b>D</b> Stories without step-back (min/max)	2/12
<b>E</b> Primary street step-back depth (min)	30'
Side street step-back depth (min)	30'

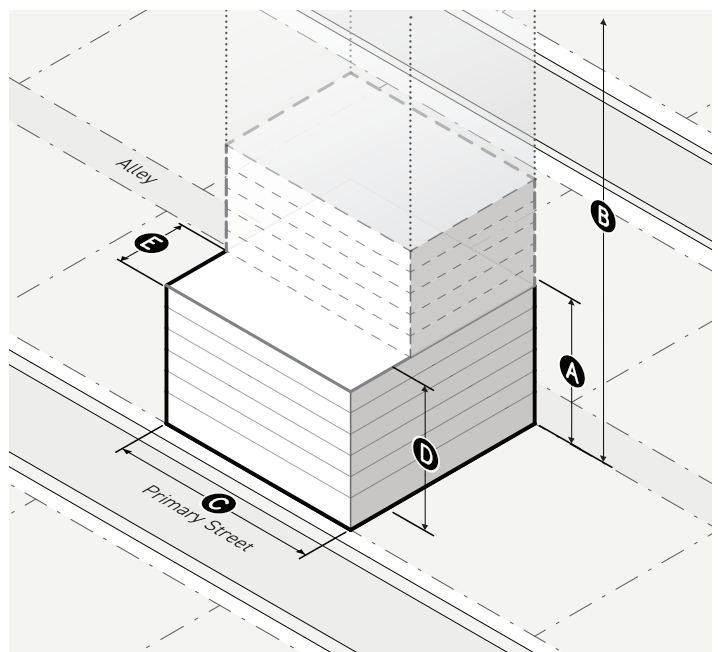
## SEC. 2B.16.4. MODERATE-RISE MEDIUM 4 (DM4)

### A. Lot Parameters



1. LOT SIZE <span style="float: right;">Div. 2C.1.</span>	
Lot area (min)	None
<b>A</b> Lot width (min)	25'
2. COVERAGE <span style="float: right;">Div. 2C.2.</span>	
<b>B</b> Building coverage (max)	100%
Building setbacks	
<b>C</b> Primary street (min)	0'
Side street (min)	0'
<b>D</b> Side (min)	0'
Rear (min)	0'
<b>E</b> Alley (min)	0'
Special: All (min)	0'
3. AMENITY <span style="float: right;">Div. 2C.3.</span>	
<b>F</b> Lot amenity space (min)	10%
Residential amenity space (min)	10%

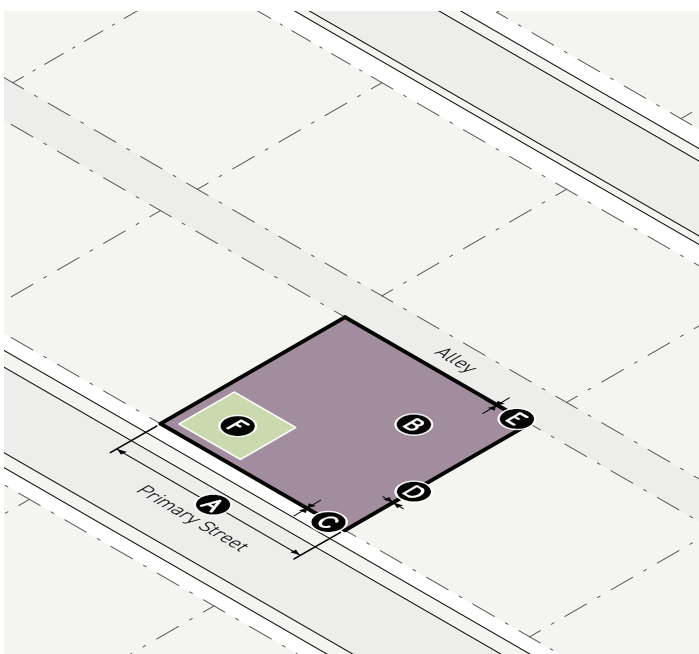
### B. Bulk and Mass



1. FAR & HEIGHT <span style="float: right;">Div. 2C.4.</span>	
Floor area ratio (FAR)	
Base (max)	6.0
Bonus (max)	8.5
<b>A</b> Height in stories (min)	6
<b>B</b> Height (max)	None
2. BUILDING MASS <span style="float: right;">Div. 2C.5.</span>	
<b>C</b> Building width (max)	160'
Building break (min)	15'
3. UPPER-STORY BULK <span style="float: right;">Div. 2C.6.</span>	
Street step-back	
<b>D</b> Stories without step-back (min/max)	2/12
<b>E</b> Primary street step-back depth (min)	30'
Side street step-back depth (min)	30'

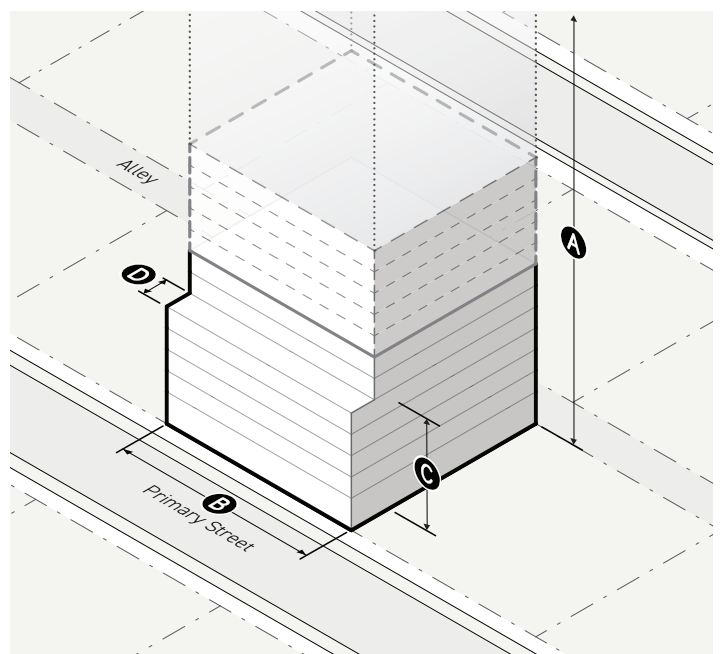
## SEC. 2B.16.5. MODERATE-RISE MEDIUM 5 (DM5)

### A. Lot Parameters



1. LOT SIZE <span style="float: right;">Div. 2C.1.</span>	
Lot area (min)	None
<b>A</b> Lot width (min)	25'
2. COVERAGE <span style="float: right;">Div. 2C.2.</span>	
<b>B</b> Building coverage (max)	100%
Building setbacks	
<b>C</b> Primary street (min)	0'
Side street (min)	0'
<b>D</b> Side (min)	0'
Rear (min)	0'
<b>E</b> Alley (min)	0'
Special: All (min)	0'
3. AMENITY <span style="float: right;">Div. 2C.3.</span>	
<b>F</b> Lot amenity space (min)	10%
Residential amenity space (min)	10%

### B. Bulk and Mass



1. FAR & HEIGHT <span style="float: right;">Div. 2C.4.</span>	
Floor area ratio (FAR)	
Base (max)	6.0
Bonus (max)	8.5
<b>A</b> Height (max)	None
2. BUILDING MASS <span style="float: right;">Div. 2C.5.</span>	
<b>B</b> Building width (max)	160'
Building break (min)	15'
3. UPPER-STORY BULK <span style="float: right;">Div. 2C.6.</span>	
Street step-back	
<b>C</b> Stories without step-back (min/max)	2/5
<b>D</b> Primary street step-back depth (min)	10'
Side street step-back depth (min)	10'

## DIV. 2B.17. **MODERATE-RISE BROAD FORM DISTRICTS**

Pursuant to *Sec. 2A.1.4. (Form District Naming Convention)*, each Moderate-Rise Broad Form District has a maximum FAR ranging from 6.1 to 8.5, and a maximum building width ranging from 280 to 490 feet.

[Reserved]

## DIV. 2B.18. MODERATE-RISE FULL FORM DISTRICTS

Pursuant to Sec. 2A.1.4. (Form District Naming Convention), each Moderate-Rise Full Form District has a maximum FAR ranging from 6.1 to 8.5, and no maximum building width.

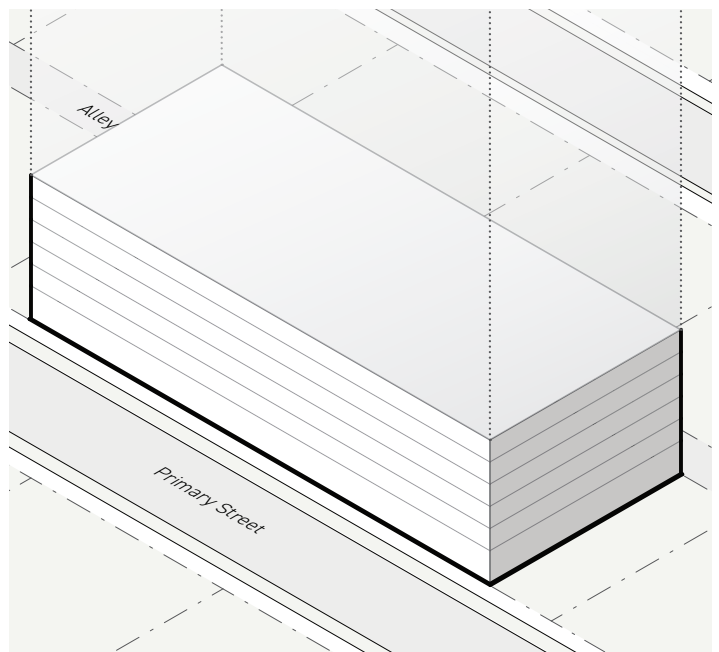
### SEC. 2B.18.1. MODERATE-RISE FULL 1 (DF1)

#### A. Lot Parameters



1. LOT SIZE <span>Div. 2C.1.</span>	
Lot area (min)	None
<b>A</b> Lot width (min)	25'
2. COVERAGE <span>Div. 2C.2.</span>	
<b>B</b> Building coverage (max)	95%
Building setbacks	
<b>C</b> Primary street (min)	0'
Side street (min)	0'
<b>D</b> Side (min)	0'
Rear (min)	0'
<b>E</b> Alley (min)	0'
Special: All (min)	0'
3. AMENITY <span>Div. 2C.3.</span>	
<b>F</b> Lot amenity space (min)	10%
Residential amenity space (min)	10%

#### B. Bulk and Mass



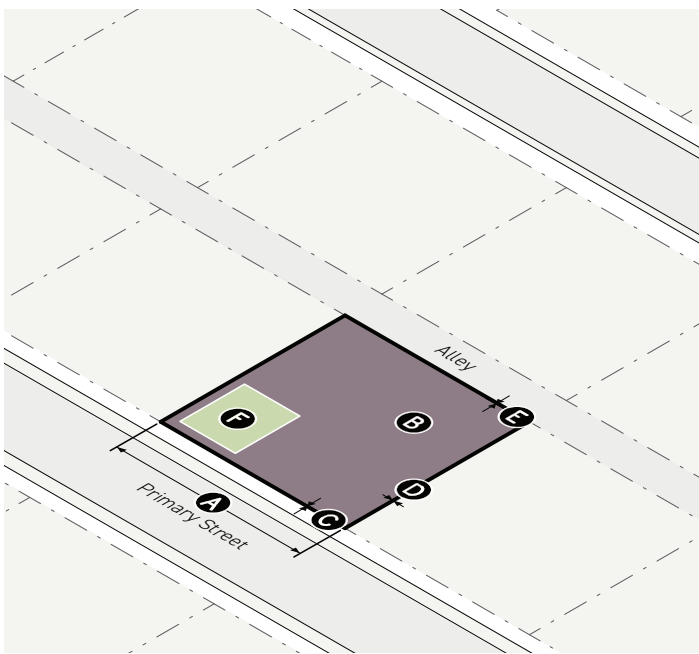
1. FAR & HEIGHT <span>Div. 2C.4.</span>	
Floor area ratio (FAR)	
Base (max)	6.5
Bonus (max)	None
City Hall Height Restriction	Yes
2. BUILDING MASS <span>Div. 2C.5.</span>	
Not applicable	
3. UPPER-STORY BULK <span>Div. 2C.6.</span>	
Not applicable	

## DIV. 2B.19. HIGH-RISE MEDIUM FORM DISTRICTS

Pursuant to Sec. 2A.1.4. (Form District Naming Convention), each High-Rise Medium Form District has a maximum FAR ranging from 8.6 to 13.0, and a maximum building width ranging from 100 to 210 feet.

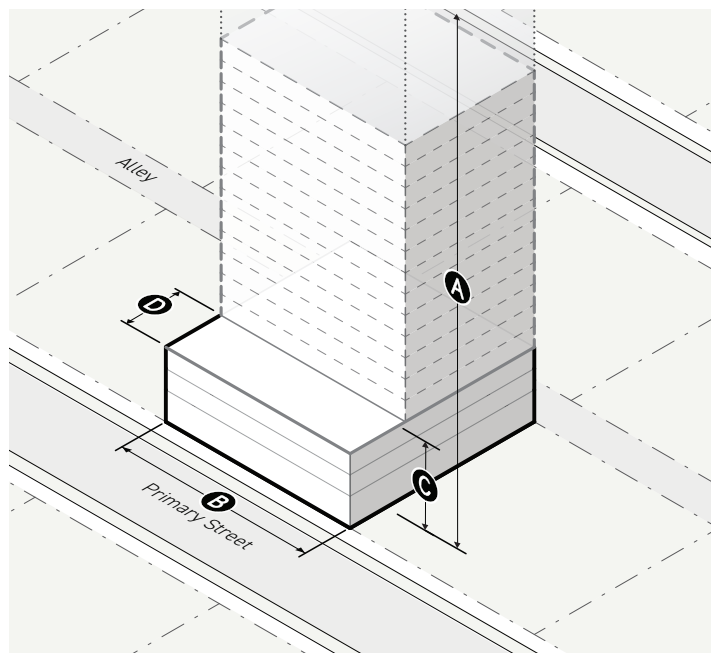
### SEC. 2B.19.1. HIGH-RISE MEDIUM 1 (HM1)

#### A. Lot Parameters



1. LOT SIZE <span style="float: right;">Div. 2C.1.</span>	
Lot area (min)	None
<b>A</b> Lot width (min)	25'
2. COVERAGE <span style="float: right;">Div. 2C.2.</span>	
<b>B</b> Building coverage (max)	100%
Building setbacks	
<b>C</b> Primary street (min)	0'
Side street (min)	0'
<b>D</b> Side (min)	0'
Rear (min)	0'
<b>E</b> Alley (min)	0'
Special: All (min)	0'
3. AMENITY <span style="float: right;">Div. 2C.3.</span>	
<b>F</b> Lot amenity space (min)	10%
Residential amenity space (min)	10%

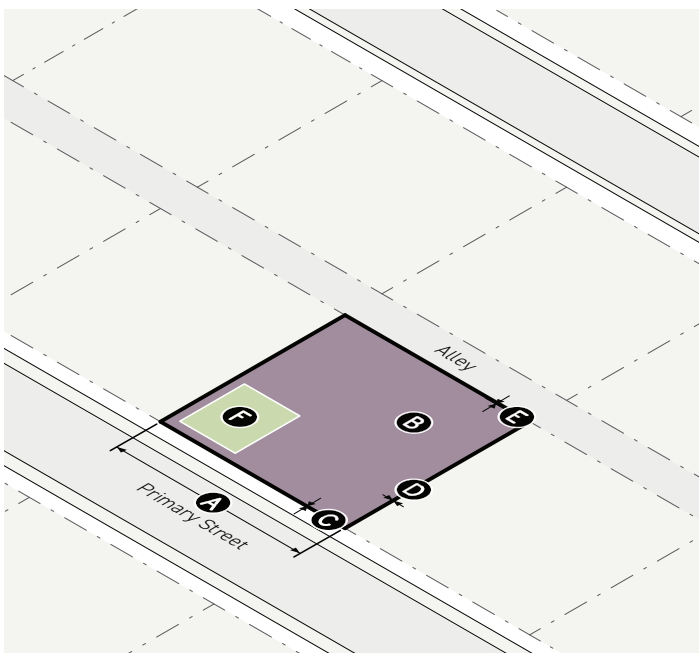
#### B. Bulk and Mass



1. FAR & HEIGHT <span style="float: right;">Div. 2C.4.</span>	
Floor area ratio (FAR)	
Base (max)	3.0
Bonus (max)	13.0
<b>A</b> Height (max)	None
2. BUILDING MASS <span style="float: right;">Div. 2C.5.</span>	
<b>B</b> Building width (max)	210'
Building break (min)	15'
3. UPPER-STORY BULK <span style="float: right;">Div. 2C.6.</span>	
Street step-back	
<b>C</b> Stories without step-back (min/max)	2/12
<b>D</b> Primary street step-back depth (min)	30'
Side street step-back depth (min)	30'

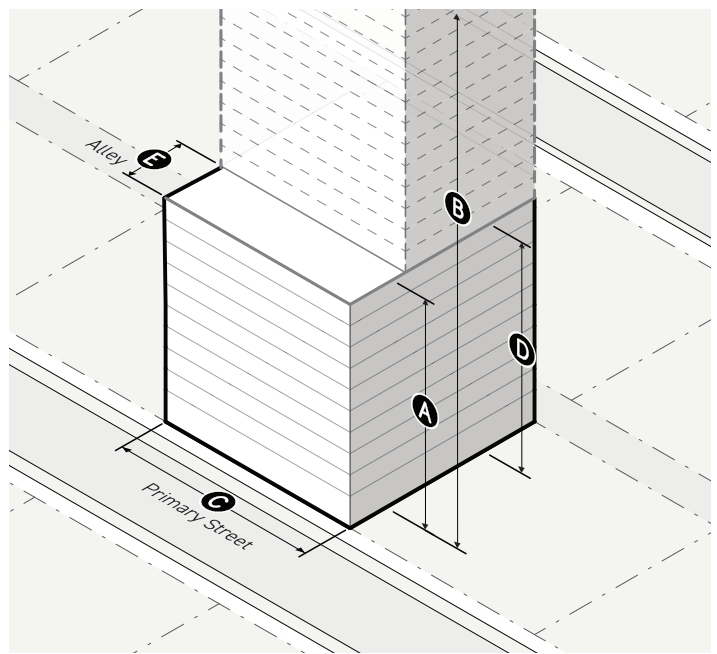
## SEC. 2B.19.2. HIGH-RISE MEDIUM 2 (HM2)

### A. Lot Parameters



1. LOT SIZE <span style="float: right;">Div. 2C.1.</span>	
Lot area (min)	None
<b>A</b> Lot width (min)	25'
2. COVERAGE <span style="float: right;">Div. 2C.2.</span>	
<b>B</b> Building coverage (max)	100%
Building setbacks	
<b>C</b> Primary street (min)	0'
Side street (min)	0'
<b>D</b> Side (min)	0'
Rear (min)	0'
<b>E</b> Alley (min)	0'
Special: All (min)	0'
3. AMENITY <span style="float: right;">Div. 2C.3.</span>	
<b>F</b> Lot amenity space (min)	10%
Residential amenity space (min)	10%

### B. Bulk and Mass



1. FAR & HEIGHT <span style="float: right;">Div. 2C.4.</span>	
Floor area ratio (FAR)	
Base (max)	6.0
Bonus (max)	13.0
<b>A</b> Height in stories (min)	10
<b>B</b> Height (max)	None
2. BUILDING MASS <span style="float: right;">Div. 2C.5.</span>	
<b>C</b> Building width (max)	210'
Building break (min)	15'
3. UPPER-STORY BULK <span style="float: right;">Div. 2C.6.</span>	
Street step-back	
<b>D</b> Stories without step-back (min/max)	2/12
<b>E</b> Primary street step-back depth (min)	30'
Side street step-back depth (min)	30'

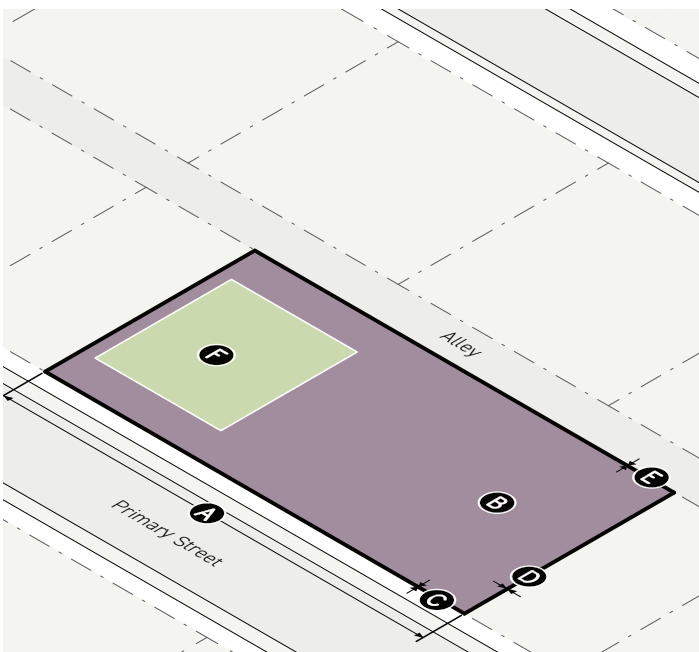


## DIV. 2B.20. HIGH-RISE BROAD FORM DISTRICTS

Pursuant to Sec. 2A.1.4. (Form District Naming Convention), each High-Rise Broad Form District has a maximum FAR ranging from 8.6 to 13.0, and a maximum building width ranging from 280 to 490 feet.

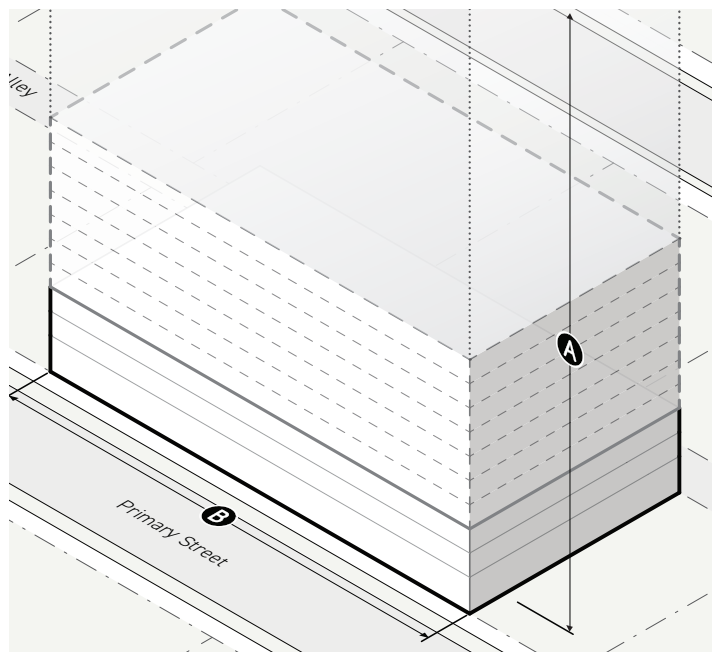
### SEC. 2B.20.1. HIGH-RISE BROAD 1 (HB1)

#### A. Lot Parameters



1. LOT SIZE <span>Div. 2C.1.</span>	
Lot area (min)	None
<b>A</b> Lot width (min)	25'
2. COVERAGE <span>Div. 2C.2.</span>	
<b>B</b> Building coverage (max)	100%
Building setbacks	
<b>C</b> Primary street (min)	0'
Side street (min)	0'
<b>D</b> Side (min)	0'
Rear (min)	0'
<b>E</b> Alley (min)	0'
Special: All (min)	0'
3. AMENITY <span>Div. 2C.3.</span>	
<b>F</b> Lot amenity space (min)	20%
Residential amenity space (min)	10%

#### B. Bulk and Mass



1. FAR & HEIGHT <span>Div. 2C.4.</span>	
Floor area ratio (FAR)	
Base (max)	3.0
Bonus (max)	10.0
<b>A</b> Height (max)	None
2. BUILDING MASS <span>Div. 2C.5.</span>	
<b>B</b> Building width (max)	350'
Building break (min)	25'
3. UPPER-STORY BULK <span>Div. 2C.6.</span>	
Not applicable	

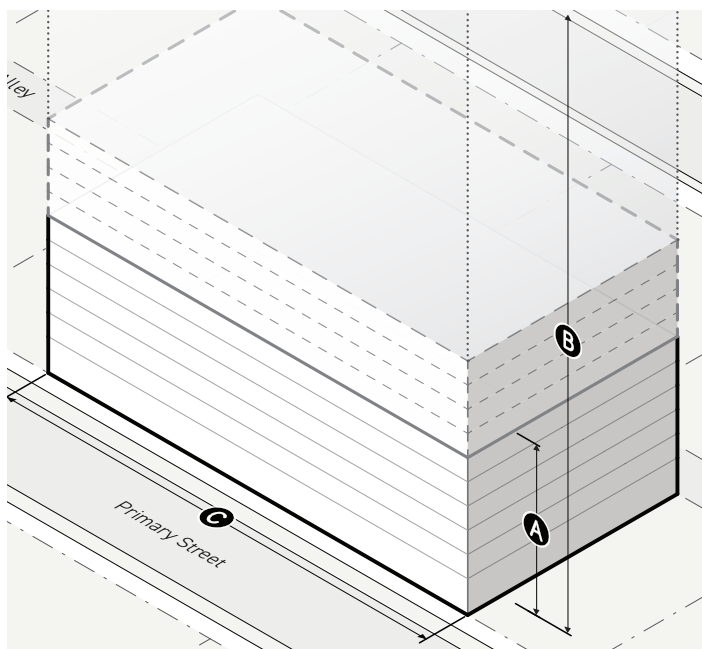
## SEC. 2B.20.2. HIGH-RISE BROAD 2 (HB2)

### A. Lot Parameters



1. LOT SIZE <span>Div. 2C.1.</span>	
Lot area (min)	None
<b>A</b> Lot width (min)	25'
2. COVERAGE <span>Div. 2C.2.</span>	
<b>B</b> Building coverage (max)	100%
Building setbacks	
<b>C</b> Primary street (min)	0'
Side street (min)	0'
<b>D</b> Side (min)	0'
Rear (min)	0'
<b>E</b> Alley (min)	0'
Special: All (min)	0'
3. AMENITY <span>Div. 2C.3.</span>	
<b>F</b> Lot amenity space (min)	20%
Residential amenity space (min)	10%

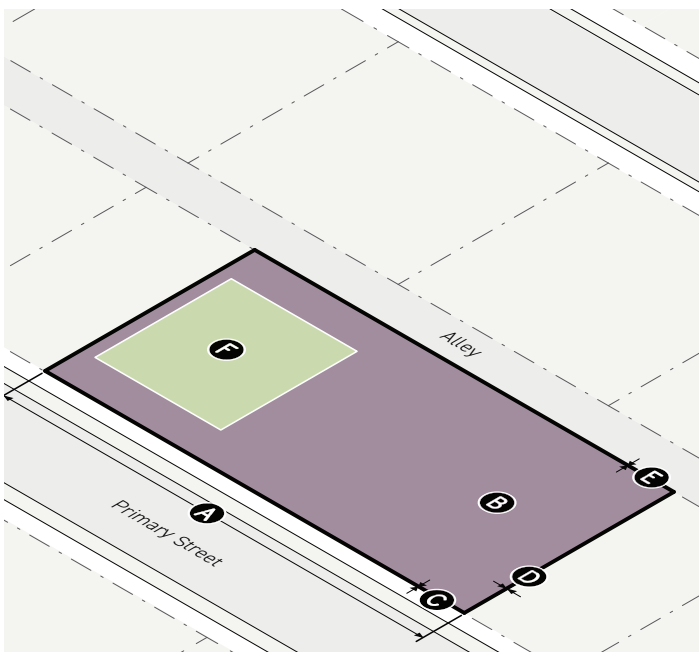
### B. Bulk and Mass



1. FAR & HEIGHT <span>Div. 2C.4.</span>	
Floor area ratio (FAR)	
Base (max)	6.0
Bonus (max)	10.0
<b>A</b> Height in stories (min)	4
<b>B</b> Height (max)	None
2. BUILDING MASS <span>Div. 2C.5.</span>	
<b>C</b> Building width (max)	350'
Building break (min)	25'
3. UPPER-STORY BULK <span>Div. 2C.6.</span>	
Not applicable	

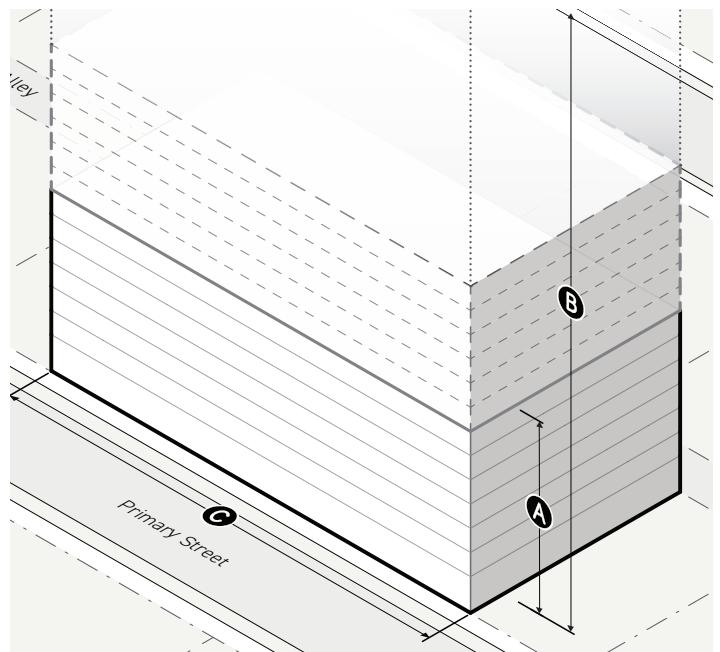
## SEC. 2B.20.3. HIGH-RISE BROAD 3 (HB3)

### A. Lot Parameters



1. LOT SIZE <span style="float: right;">Div. 2C.1.</span>	
Lot area (min)	None
<b>A</b> Lot width (min)	25'
2. COVERAGE <span style="float: right;">Div. 2C.2.</span>	
<b>B</b> Building coverage (max)	100%
Building setbacks	
<b>C</b> Primary street (min)	0'
Side street (min)	0'
<b>D</b> Side (min)	0'
Rear (min)	0'
<b>E</b> Alley (min)	0'
Special: All (min)	0'
3. AMENITY <span style="float: right;">Div. 2C.3.</span>	
<b>F</b> Lot amenity space (min)	20%
Residential amenity space (min)	10%

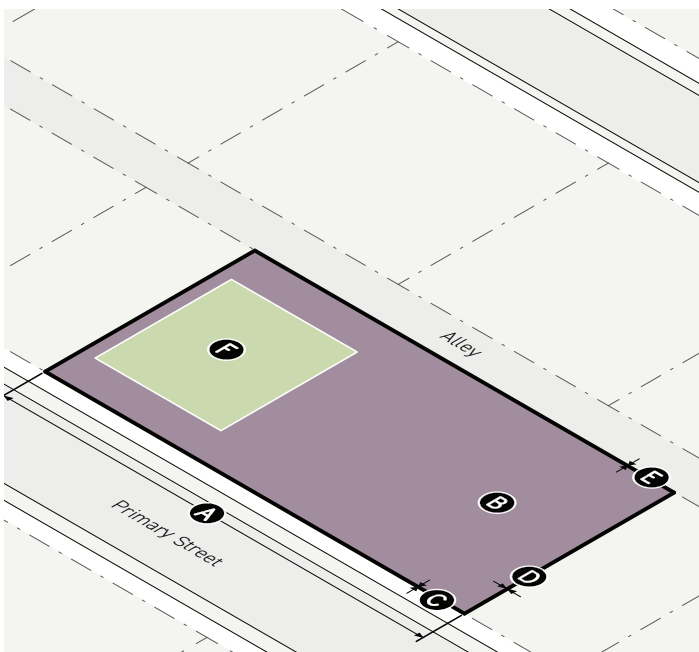
### B. Bulk and Mass



1. FAR & HEIGHT <span style="float: right;">Div. 2C.4.</span>	
Floor area ratio (FAR)	
Base (max)	7.0
Bonus (max)	13.0
<b>A</b> Height in stories (min)	6
<b>B</b> Height (max)	None
2. BUILDING MASS <span style="float: right;">Div. 2C.5.</span>	
<b>C</b> Building width (max)	350'
Building break (min)	25'
3. UPPER-STORY BULK <span style="float: right;">Div. 2C.6.</span>	
Not applicable	

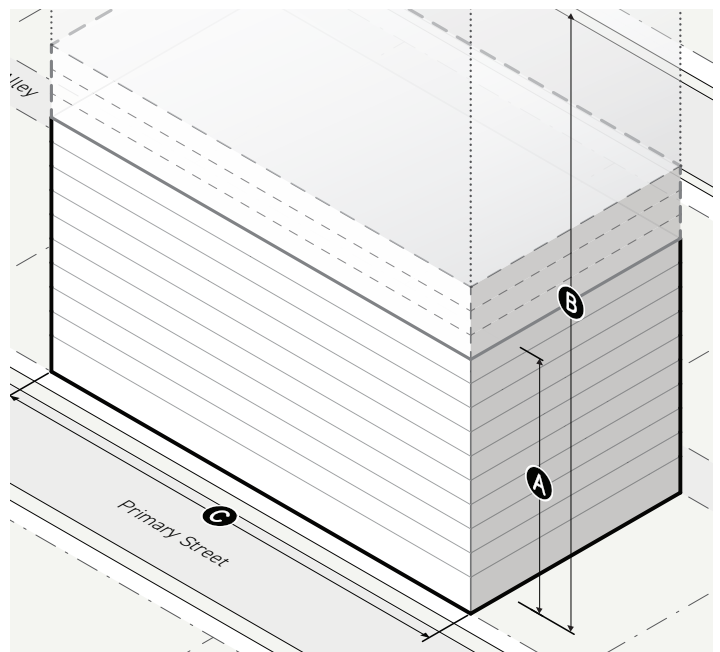
## SEC. 2B.20.4. HIGH-RISE BROAD 4 (HB4)

### A. Lot Parameters



1. LOT SIZE <span style="float: right;">Div. 2C.1.</span>	
Lot area (min)	None
<b>A</b> Lot width (min)	25'
2. COVERAGE <span style="float: right;">Div. 2C.2.</span>	
<b>B</b> Building coverage (max)	100%
Building setbacks	
<b>C</b> Primary street (min)	0'
Side street (min)	0'
<b>D</b> Side (min)	0'
Rear (min)	0'
<b>E</b> Alley (min)	0'
Special: All (min)	0'
3. AMENITY <span style="float: right;">Div. 2C.3.</span>	
<b>F</b> Lot amenity space (min)	20%
Residential amenity space (min)	10%

### B. Bulk and Mass



1. FAR & HEIGHT <span style="float: right;">Div. 2C.4.</span>	
Floor area ratio (FAR)	
Base (max)	9.0
Bonus FAR (max)	13.0
<b>A</b> Height in stories (min)	10
<b>B</b> Height (max)	None
City Hall Height Restriction	Yes
2. BUILDING MASS <span style="float: right;">Div. 2C.5.</span>	
<b>C</b> Building width (max)	350'
Building break (min)	25'
3. UPPER-STORY BULK <span style="float: right;">Div. 2C.6.</span>	
Not applicable	

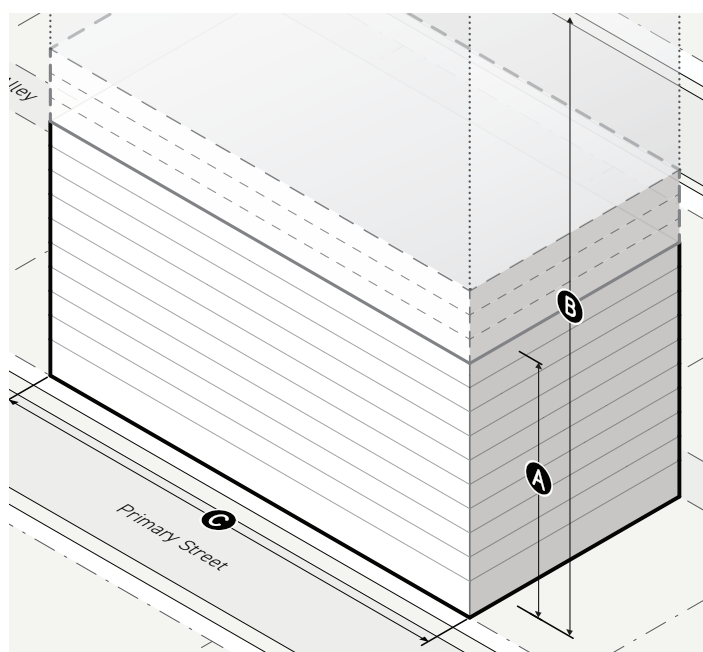
## SEC. 2B.20.5. HIGH-RISE BROAD 5 (HB5)

### A. Lot Parameters



1. LOT SIZE <span style="float: right;">Div. 2C.1.</span>	
Lot area (min)	None
<b>A</b> Lot width (min)	25'
2. COVERAGE <span style="float: right;">Div. 2C.2.</span>	
<b>B</b> Building coverage (max)	100%
Building setbacks	
<b>C</b> Primary street (min)	0'
Side street (min)	0'
<b>D</b> Side (min)	0'
Rear (min)	0'
<b>E</b> Alley (min)	0'
Special: All (min)	0'
3. AMENITY <span style="float: right;">Div. 2C.3.</span>	
<b>F</b> Lot amenity space (min)	20%
Residential amenity space (min)	10%

### B. Bulk and Mass



1. FAR & HEIGHT <span style="float: right;">Div. 2C.4.</span>	
Floor area ratio (FAR)	
Base (max)	9.0
Bonus (max)	13.0
<b>A</b> Height in stories (min)	10
<b>B</b> Height (max)	None
2. BUILDING MASS <span style="float: right;">Div. 2C.5.</span>	
<b>C</b> Building width (max)	350'
Building break (min)	25'
3. UPPER-STORY BULK <span style="float: right;">Div. 2C.6.</span>	
Not applicable	

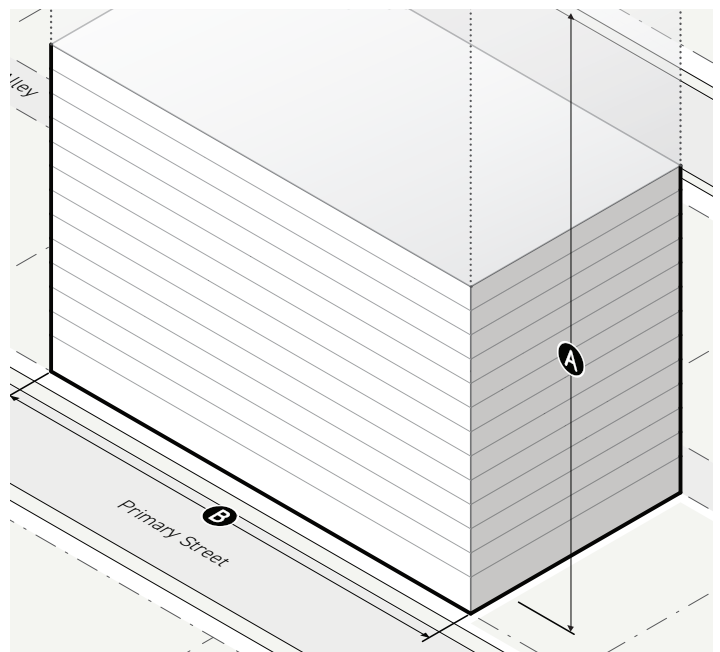
## SEC. 2B.20.6. HIGH-RISE BROAD 6 (HB6)

### A. Lot Parameters



1. LOT SIZE <span style="float: right;">Div. 2C.1.</span>	
Lot area (min)	None
<b>A</b> Lot width (min)	25'
2. COVERAGE <span style="float: right;">Div. 2C.2.</span>	
<b>B</b> Building coverage (max)	100%
Building setbacks	
<b>C</b> Primary street (min)	0'
Side street (min)	0'
<b>D</b> Side (min)	0'
Rear (min)	0'
<b>E</b> Alley (min)	0'
Special: All (min)	0'
3. AMENITY <span style="float: right;">Div. 2C.3.</span>	
<b>F</b> Lot amenity space (min)	20%
Residential amenity space (min)	10%

### B. Bulk and Mass



1. FAR & HEIGHT <span style="float: right;">Div. 2C.4.</span>	
Floor area ratio (FAR)	
Base (max)	13.0
Bonus (max)	None
<b>A</b> Height (max)	None
2. BUILDING MASS <span style="float: right;">Div. 2C.5.</span>	
<b>B</b> Building width (max)	350'
Building break (min)	25'
3. UPPER-STORY BULK <span style="float: right;">Div. 2C.6.</span>	
Not applicable	

## DIV. 2B.21. **HIGH-RISE FULL FORM DISTRICTS**

Pursuant to Sec. 2A.1.4. (*Form District Naming Convention*), each High-Rise Full Form District has a maximum FAR ranging from 8.6 to 13.0, and no maximum building width.

[Reserved]

## PART 2C. FORM RULES

<b>Div. 2C.1. Lot Size . . . . .</b>	<b>2-45</b>
Sec. 2C.1.1. Lot Area . . . . .	2-45
Sec. 2C.1.2. Lot Width . . . . .	2-46
<b>Div. 2C.2. Coverage . . . . .</b>	<b>2-48</b>
Sec. 2C.2.1. Building Coverage . . . . .	2-48
Sec. 2C.2.2. Building Setbacks . . . . .	2-50
<b>Div. 2C.3. Amenity . . . . .</b>	<b>2-54</b>
Sec. 2C.3.1. Lot Amenity Space . . . . .	2-54
Sec. 2C.3.2. Residential Amenity Space . . . . .	2-56
Sec. 2C.3.3. Amenity Space Types . . . . .	2-58
Sec. 2C.3.4. Amenity Design Standards . . . . .	2-62
<b>Div. 2C.4. Floor Area Ratio &amp; Height . . . . .</b>	<b>2-67</b>
Sec. 2C.4.1. Floor Area Ratio (FAR) . . . . .	2-67
Sec. 2C.4.2. Height in Feet . . . . .	2-69
Sec. 2C.4.3. Height in Stories . . . . .	2-72
Sec. 2C.4.4. City Hall Height Restriction . . . . .	2-75
<b>Div. 2C.5. Building Mass . . . . .</b>	<b>2-78</b>
Sec. 2C.5.1. Building Width . . . . .	2-78
<b>Div. 2C.6. Upper-Story Bulk . . . . .</b>	<b>2-82</b>
Sec. 2C.6.1. Street Step-Back . . . . .	2-82
Sec. 2C.6.2. District Boundary Height Transition . . . . .	2-84



## DIV. 2C.1. LOT SIZE

### SEC. 2C.1.1. LOT AREA

*Lot area is defined as the total area within the boundaries of a lot.*

#### A. Intent

The intent of the standards of this *Section (Lot Area)* is to ensure that newly established lots are consistent in size with surrounding lots.

#### B. Applicability

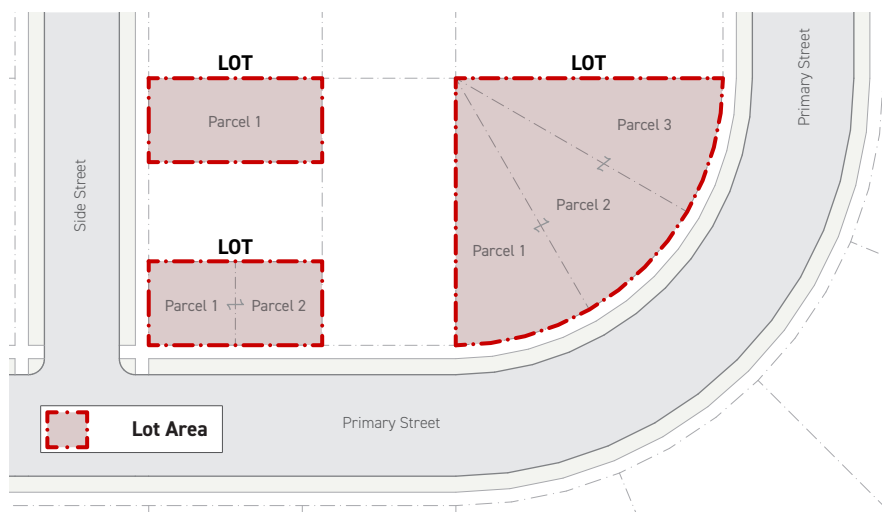
Lot area standards apply to any lot modification. When lot area standards apply, they apply to all lots subject to the lot modification.

#### C. Standards

No lot may have an area less than the minimum specified in the applied *Form District (Part 2B.)*.

#### D. Measurement

1. Lot area is measured as the total area within the boundary of a lot.
2. Lot area includes all portions of a lot allocated for required easements.
3. For measurement on portions of a lot required for land dedication, see *Sec. 14.2.11. (Lot)*.



#### E. Relief

1. A reduction in required lot area of 20 percent or less may be granted in accordance with *Sec. 13B.5.2. (Adjustment)*.
2. A reduction in required lot area may be granted as a variance in accordance with *Sec. 13B.5.3. (Variance)*.

## SEC. 2C.1.2. LOT WIDTH

*Lot width is defined as the length of primary street lot lines bounding a lot.*

### A. Intent

The intent of the standards of this *Section (Lot Width)* is to ensure that newly established lots are consistent in width with surrounding lots.

### B. Applicability

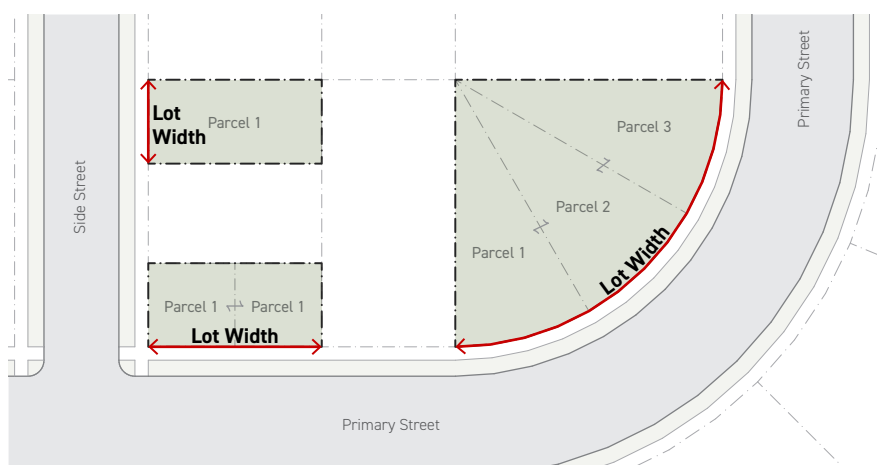
Lot width standards apply to any lot modification. When lot width standards apply, they apply to all lots subject to the lot modification.

### C. Standards

1. No lot shall have a width less than the minimum specified by the applied *Form District (Part 2B.)*.
2. For the purpose of meeting minimum lot width standards, multiple lots may be grouped together as a lot when a lot tie affidavit is filed and approved by the Department of Building and Safety.

### D. Measurement

1. Lot width is measured following the geometry of all primary street lot lines that bound the lot.
2. Where a lot has two or more primary street lot lines facing different streets, both primary street lot lines shall meet the minimum lot width standard.
3. For measurement on portions of a lot required for dedication of land, see Sec. 14.2.11. (*Lot*).



## E. Relief

1. A reduction in required lot width of 20 percent or less may be granted in accordance with Sec. 13B.5.2. (*Adjustment*).
2. A reduction in required lot width may be granted as a variance in accordance with Sec. 13B.5.3. (*Variance*).

## DIV. 2C.2. **COVERAGE**

### SEC. 2C.2.1. **BUILDING COVERAGE**

*Building coverage is defined as the percentage of lot area covered by buildings or structures.*

#### A. **Intent**

The intent of the standards of this Section (*Building Coverage*) is to preserve open area on a lot by limiting the amount of buildings or structures that may cover a lot.

#### B. **Applicability**

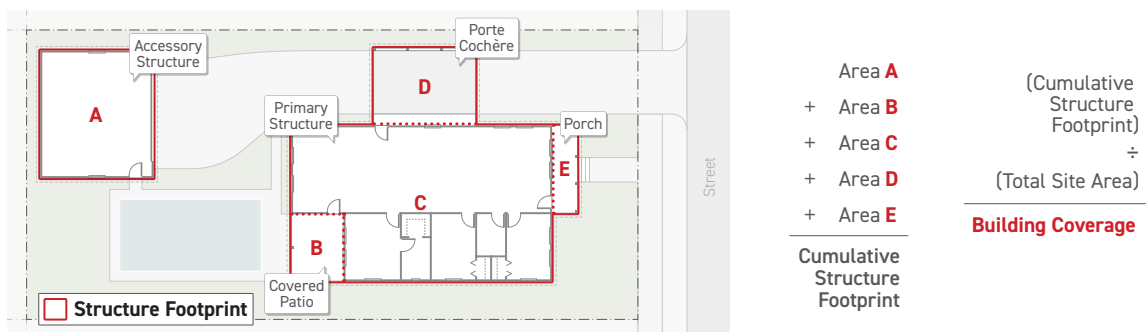
Building coverage standards apply to new construction or a major remodel. When building coverage standards apply, the standards apply to all buildings and structures on a lot.

#### C. **Standards**

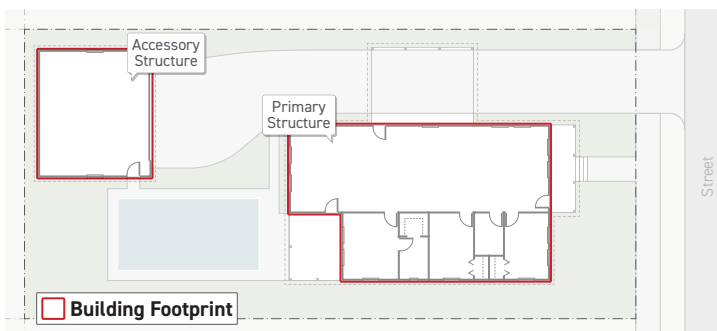
Covered structures on a lot shall not have a cumulative area in excess of the maximum building coverage specified by the applied Form District (Part 2B.).

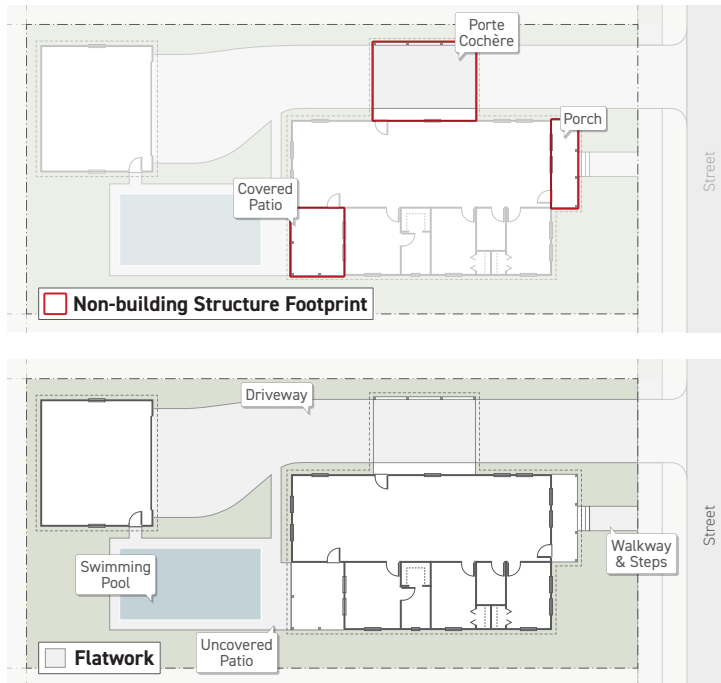
#### D. **Measurement**

1. Building coverage is measured by dividing the cumulative area of the structure footprints of all covered structures on the lot by the lot area.



2. Structure footprints include all building footprints and structure footprints but do not include flatwork.

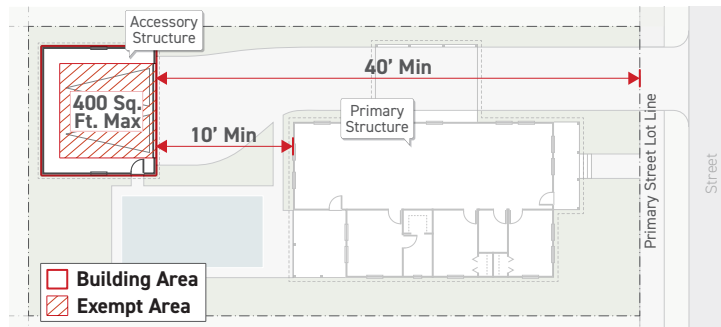




3. For covered structures, see *Sec. 14.2.2.A.1. (Covered)*.
4. For structure footprint and building footprint determination, see *Sec. 14.2.1. (Building Footprint)*.

## E. Exceptions

1. Covered structures or portions of covered structures less than six feet in height, as measured from adjacent finished grade, are not included in the calculation of building coverage.
2. For lots with two or fewer dwelling units, having a *House Form District (Div. 2B.3.)* applied, a maximum of 400 square feet per lot is exempt from the calculation of building coverage, provided the building or structure is:
  - a. Used for required automobile parking;
  - b. Detached from the primary building or structure by a minimum of 10 feet; and
  - c. Located a minimum of 40 feet from a primary street lot line.



## F. Relief

1. Up to a 20 percent increase to the total allowed area of covered structures on a lot may be granted in accordance with *Sec. 13B.5.2. (Adjustment)*.
2. Increased building coverage may be granted as a variance in accordance with *Sec. 13B.5.3. (Variance)*.

## SEC. 2C.2.2. BUILDING SETBACKS

*Building setback is defined as the area on a lot not intended for buildings and structures. Building setbacks include primary street setbacks, side street setbacks, side setbacks, rear setbacks, alley setbacks, and special lot line setbacks.*

### A. Intent

The intent of the standards of this *Section (Building Setbacks)* is to provide open areas on the lot and help reduce the impact of buildings or structures on abutting sidewalks and neighboring development.

### B. Applicability

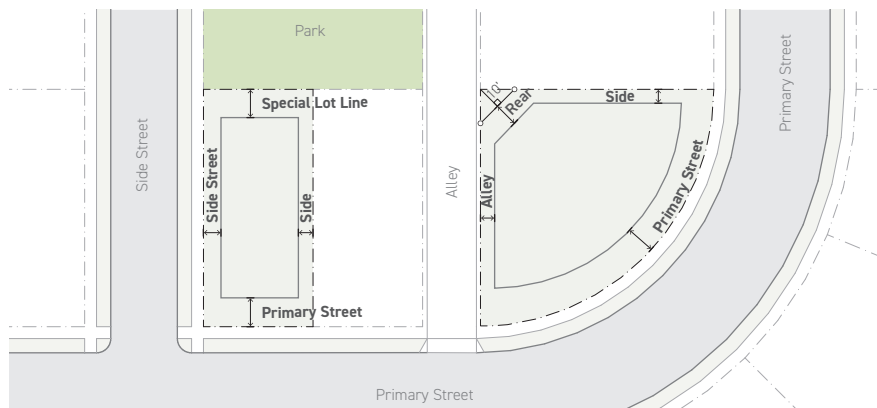
Building setback standards apply to new construction or a major remodel. When the building setback standards apply, the standards apply to all buildings and structures on a lot.

### C. Standards

All buildings and structures on the lot shall be located on or behind a minimum building setback, except where allowed in *Subsection E. (Exceptions)* below.

### D. Measurement

All building setbacks are measured perpendicular to the applicable lot line:



1. A primary street setback is measured from the primary street lot line.
2. A side street setback is measured from the side street lot line.

3. A side setback is measured from the side lot line.
4. A rear setback is measured from the rear lot line.
5. An alley setback is measured from the alley lot line.
6. A special setback is measured from the special lot line.
  - a. Where a special setback is specified by the applied *Form District (Part 2B.)* as "Special: All", the setback is measured from all special lot lines.
  - b. Where a special setback is specified by the applied *Form District (Part 2B.)* as "Special: River" or "Special: Alley", the setback is measured from the special lot line as designated according to Sec. 14.2.12.C.3. (*Special Lot Line*).
  - c. Where a special setback is specified by the applied *Form District (Part 2B.)* as "Special: Other", the setback is measured from all special lot lines that are not otherwise specified.
7. For measurement on portions of a lot required for dedication of land, see Sec. 14.2.11. (*Lot*).
8. For measurement on a lot affected by a public access easement, see Sec. 14.2.17.B.1. (*Building Setback*).

## E. Exceptions

1. The following are allowed to encroach beyond the building setback up to the minimum distance from the lot line specified below:

HORIZONTAL ENCROACHMENTS ALLOWED INTO SETBACKS			
	Lot Lines		
	Primary/Side Street, Special	Side/Rear	Alley
<b>Architectural Details (Sec. 14.2.5.A.1.a.)</b>			
Encroachment (max)	2'	2'	2'
Distance from lot line (min)	0'	2.5'	0'
<b>Roof Projections (Sec. 14.2.5.A.1.b.)</b>			
Encroachment (max)	2.5'	2.5'	2.5'
Distance from lot line (min)	0'	2.5'	0'
<b>Unenclosed Structures: Ground story (Sec. 14.2.5.A.1.c.)</b>			
Encroachment (max)	7'	5'	7'
Distance from lot line (min)	0'	2.5'	2.5'
<b>Unenclosed Structures: Above ground story (Sec. 14.2.5.A.1.d.)</b>			
Encroachment (max)	5'	3'	3'
Distance from lot line (min)	0'	5'	2.5'

HORIZONTAL ENCROACHMENTS ALLOWED INTO SETBACKS			
	Lot Lines		
	Primary/Side Street, Special	Side/Rear	Alley
<b>Enclosed Structures: Projecting</b> (Sec. 14.2.5.A.1.e.)			
Encroachment (max)	2.5'	1.5'	2.5'
Distance from lot line (min)	0'	2.5'	2.5'
<b>Mechanical/Electrical Equipment: Ground mounted</b> (Sec. 14.2.5.A.1.f.)			
Encroachment (max)	1.5'	2.5'	2.5'
Distance from lot line (min)	15'	2.5'	0'
<b>Mechanical/Electrical Equipment: Wall mounted</b> (Sec. 14.2.5.A.1.g.)			
Encroachment (max)	1.5'	1.5'	1.5'
Distance from lot line (min)	15'	2.5'	0'
<b>Waste Enclosures</b> (Sec. 14.2.5.A.1.h.)			
Encroachment (max)	0'	unlimited	unlimited
Distance from lot line (min)	15'	2.5'	0'
<b>Utility Equipment, Underground Structures, Flatwork, Fences and Walls, Vegetation, Outdoor Furniture</b> (Sec. 14.2.5.A.1.i. - Sec. 14.2.5.A.1.n.)			
Encroachment (max)	unlimited	unlimited	unlimited
Distance from lot line (min)	0'	0'	0'

- For existing nonconforming building exceptions, see Sec. 12.2.1. (*Coverage Exceptions*).
- Modifications to existing structures may encroach beyond the limitations specified in the Horizontal Encroachments Allowed Into Setbacks table, pursuant to *Paragraph 1.* above, only where such limitations conflict with California State Accessibility Standards or Fire Code. When greater encroachments are necessary, the horizontal encroachment shall extend the minimum amount necessary to achieve compliance.

## F. Relief

- A deviation from a required setback along a special lot line that abuts a public right-of-way or public open space may be granted in accordance with Sec. 13B.5.1. (*Alternative Compliance*). In addition to the finding otherwise required by Sec. 13B.5.1. (*Alternative Compliance*), the Director shall also consider:
  - That the granting of the application will improve a site's connection with the public right-of-way or public open space.
  - Where a deviation from a required setback from a special river lot line is granted, the application will improve a site's connection with the river or will improve river access.



2. A reduction in required setback of 20 percent or less may be granted in accordance with Sec. 13B.5.2. (*Adjustment*), provided the resulting setback is at least three feet.
3. A setback reduction may be granted as a variance in accordance with Sec. 13B.5.3. (*Variance*).

## DIV. 2C.3. **AMENITY**

### SEC. 2C.3.1. **LOT AMENITY SPACE**

*Lot amenity space is defined as an area on a lot designated to be used for active or passive recreation, including common outdoor amenity space, pedestrian amenity space, and public amenity space.*

#### A. **Intent**

The intent of the standards of this Section (*Lot Amenity Space*) is to provide adequate recreation and open space areas for all tenants of a project, regardless of the use of a building, and to ensure such spaces are accessible, usable, and safe.

#### B. **Applicability**

Lot amenity space standards apply to new construction that results in an increase of 20 percent or more floor area, or to any lot modifications.

#### C. **Standards**

1. The cumulative area of lot amenity space provided on a lot shall not be less than that specified by the applied *Form District (Part 2B.)*.
2. Each area provided to meet a lot amenity space requirement shall comply with the standards for one or more of the following eligible amenity space types.

ELIGIBLE AMENITY SPACE TYPES	
Amenity Space Type	Eligible
<b>Common Outdoor Amenity Space</b> (Sec. 2C.3.3.C.1.)	Yes
<b>Pedestrian Amenity Space</b> (Sec. 2C.3.3.C.2.)	Yes
<b>Public Amenity Space</b> (Sec. 2C.3.3.C.3.)	Yes
<b>Private Outdoor Amenity Space</b> (Sec. 2C.3.3.C.4.)	No
<b>Common Indoor Amenity Space</b> (Sec. 2C.3.3.C.5.)	No

3. A maximum of 25 percent of the total required lot amenity space may be privately accessible to individual tenant spaces, provided it meets the design standards in Sec. 2C.3.3.C.2. (*Pedestrian Amenity Space*).
4. Lot amenity space which is privately accessible pursuant to Paragraph 3. above shall abut and provide direct access to the assigned tenant space.
5. All required lot amenity space that is not private shall be made available to all tenants of the building, at no cost, from sunrise to sunset daily or during the hours of operation of the building, whichever results in a longer period of time.
6. Lot amenity space provided in accordance with Sec. 2C.3.3.C.3. (*Public Amenity Space*) may be eligible for credit toward the fee and dedication requirements in Div. 10.4. (*Park Fees & Dedications*), according to Sec. 10.4.8.B. (*Privately Owned Park & Recreational Facilities*).

7. Lot amenity space located above the ground story may be required to set back from the roof edge, see *Chapter V. (Public Safety and Protection), Sec. 57.317. (Rooftop Gardens and Landscaped Roofs)* of this Code.
8. Mechanical equipment and utility equipment shall not be located within a lot amenity space, or between a lot amenity space and the adjacent building facade.
9. All mechanical exhaust outlets shall be located a minimum horizontal distance of 10 feet and a minimum vertical distance of 15 feet from a lot amenity space.
10. At least 20 percent of any outdoor lot amenity space shall be shaded by using shade trees or shade structures. Any area that is covered by a shade structure or a shade tree canopy spread at maturity shall be considered as being shaded.

#### D. Measurement

1. Lot amenity space is a percentage calculated by dividing the cumulative area of all lot amenity spaces by the lot area.
2. The minimum required lot amenity space is calculated by multiplying the minimum lot amenity percentage specified by the applied *Form District (Part 2B.)* by the lot area.
3. As a bonus for providing public space, outdoor amenity space area meeting *Sec. 2C.3.3.C.3. (Public Amenity Space)* counts as 1.25 square feet of lot amenity space for every one square foot of provided outdoor amenity space area.
4. Shade is calculated as the shadow cast on the publicly accessible open space measured at noon (12:00 p.m.) on the summer solstice.
5. For calculation of lot amenity space on a lot affected by a public access easement, see *Sec. 14.2.17.B.2. (Lot Amenity Space)*.

#### E. Exceptions

1. Where the calculation of lot amenity space requires less than 400 square feet, no lot amenity space is required.
2. When a lot modification involves an air space lot subdivision, the air space lot area is not used in the calculation for required lot amenity space.

#### F. Relief

1. Up to a 10 percent reduction to the total required area of lot amenity space may be granted in accordance with *Sec. 13B.5.2. (Adjustment)*.
2. A reduction in required lot amenity space may be granted as a variance in accordance with *Sec. 13B.5.3. (Variance)*.

## SEC. 2C.3.2. RESIDENTIAL AMENITY SPACE

*Residential amenity space is defined as an area which is designed and intended to be used by occupants of dwelling units for recreational, domestic, or vocational purposes.*

### A. Intent

The intent of the standards of this Section (*Residential Amenity Space*) is to ensure projects that include housing provide residential tenants of a project with adequate access to open space, recreation, and shared amenities where the lot amenity space is insufficient, and to ensure such spaces are accessible, usable, and safe.

### B. Applicability

Residential amenity space standards apply to any project that includes five or more dwelling units on a lot and involves any of the following project activities: new construction, a major remodel, a lot modification, or a use modification.

### C. Standards

1. The cumulative area of residential amenity space provided on a lot shall not be less than that specified by the applied *Form District (Part 2B.)*.
2. Each area provided to meet a residential amenity space requirement shall comply with the standards for one or more of the following eligible amenity space types.

ELIGIBLE AMENITY SPACE TYPES	
Amenity Space Type	Eligible
<b>Common Outdoor Amenity Space</b> (Sec. 2C.3.3.C.1.)	Yes
<b>Pedestrian Amenity Space</b> (Sec. 2C.3.3.C.2.)	Yes
<b>Public Amenity Space</b> (Sec. 2C.3.3.C.3.)	Yes
<b>Private Outdoor Amenity Space</b> (Sec. 2C.3.3.C.4.)	Yes
<b>Common Indoor Amenity Space</b> (Sec. 2C.3.3.C.5.)	Yes

3. At least 75 percent of the required residential amenity space shall be outdoors and meet the design standards of either Sec. 2C.3.3.C.1. (*Common Outdoor Amenity Space*) or Sec. 2C.3.3.C.4. (*Private Outdoor Amenity Space*).
4. A maximum of 65 square feet of required residential amenity space per dwelling unit may be private, provided that not more than 50 percent of the total required residential amenity space is private, and the private residential amenity space meets the design standards in Sec. 2C.3.3.C.4. (*Private Outdoor Amenity Space*).

5. Private residential amenity space shall abut and provide direct access to the assigned tenant space.



6. All required residential amenity space that is not private shall be made available to all tenants of the building, at no cost, from sunrise to sunset daily or during the hours of operation of the building, whichever results in a longer period of time.
7. Residential amenity space provided in accordance with Sec. 2C.3.3.C.3. (*Public Amenity Space*) may be eligible for credit towards the fee and dedication requirements outlined in Div. 10.4. (*Park Fees & Dedications*), according to Sec. 10.4.8.B. (*Privately Owned Park & Recreational Facilities*).
8. Residential amenity space located above the ground story may be required to set back from the roof edge, see Chapter V. (*Public Safety and Protection*), Sec. 57.317. (*Rooftop Gardens and Landscaped Roofs*) of this Code.
9. Mechanical equipment and utility equipment shall not be located within a residential amenity space, or between a residential amenity space and the adjacent building facade.
10. All mechanical exhaust outlets shall be located a minimum horizontal distance of 10 feet and a minimum vertical distance of 15 feet from a residential amenity space.
11. At least 20 percent of any outdoor residential amenity space shall be shaded by shade trees or shade structures.

#### D. Measurement

1. Residential amenity space is a percentage calculated by dividing the cumulative area of all residential amenity spaces by the total floor area allocated to dwelling units.
2. The minimum required residential amenity space is calculated by multiplying the total floor area allocated to dwelling units by the minimum percentage specified by the applied Form District (Part 2B.).

3. All lot amenity space provided may be credited toward the residential amenity space requirement.
4. As a bonus for providing public space, residential amenity space meeting Sec. 2C.3.3.C.3. (*Public Amenity Space*) counts at a rate of 1.25 square feet for every one square foot of public amenity space provided.
5. Any area that is covered by a shade structure or a shade tree canopy (as measured by spread at maturity) shall be considered as being shaded.

#### E. Relief

1. Up to a 10 percent reduction to the total required area of residential amenity space may be granted in accordance with Sec. 13B.5.2. (*Adjustment*).
2. A reduction in required residential amenity space may be granted as a variance in accordance with Sec. 13B.5.3. (*Variance*).

### SEC. 2C.3.3. AMENITY SPACE TYPES

#### A. Intent

The intent of the standards of this *Section (Amenity Space Types)* is to ensure that amenity spaces provided by projects are sufficient enough to provide spaces which are accessible, usable, and safe, and provide adequate access to open space, recreation, and shared amenities.

#### B. Applicability

Amenity space types are established in Sec. 2C.3.1. (*Lot Amenity Space*) and Sec. 2C.3.2. (*Residential Amenity Space*).

#### C. Standards

The following standards apply by type of amenity space.

## 1. Common Outdoor Amenity Space

Common outdoor amenity space is defined as a type of amenity space that is outdoors, open to all tenants of a building, and meets the following standards:

COMMON OUTDOOR AMENITY SPACE		
Amenity Space Standards	Specification	Reference
<b>Outdoor Space</b>	Required	(Sec. 2C.3.4.C.1.)
<b>Amenity Area (min)</b>	400 sf	(Sec. 2C.3.4.C.2.)
<b>Horizontal Dimension (min)</b>	15'	(Sec. 2C.3.4.C.3.)
<b>Adjacent Building Transparency (min)</b>	15%	(Sec. 2C.3.4.C.4.)
<b>Planting Area</b>		(Sec. 2C.3.4.C.5.)
At Grade Plane Elevation (min)	25%	
Above Grade Plane Elevation (min)	15%	
<b>Seating (min)</b>	2 per 400 sf	(Sec. 2C.3.4.C.6.)
<b>Ground Floor Elevation</b>	Not Required	(Sec. 2C.3.4.C.7.)
<b>Public Sidewalk/Way Adjacent</b>	Not Required	(Sec. 2C.3.4.C.8.)
<b>Pedestrian-Oriented Lighting</b>	Not Required	(Sec. 2C.3.4.C.9.)
<b>Publicly Accessible</b>	Not Required	(Sec. 2C.3.4.C.10.)
<b>Amenity Features (min)</b>	3	(Sec. 2C.3.4.C.11.)

## 2. Pedestrian Amenity Space

Pedestrian amenity space is defined as a type of amenity space that is outdoors, located at ground-level, and is accessible to pedestrians and all tenants of a building by meeting the standards in the following table. See Div. 3C.1. (Build-To) for additional provisions related to pedestrian amenity spaces.

PEDESTRIAN AMENITY SPACE		
Amenity Space Standards	Specification	Reference
<b>Outdoor Space</b>	Required	(Sec. 2C.3.4.C.1.)
<b>Amenity Area (min)</b>	200 sf	(Sec. 2C.3.4.C.2.)
<b>Horizontal Dimension (min)</b>		(Sec. 2C.3.4.C.3.)
Enclosed (min)	15'	
Unenclosed (min)	6'	
<b>Adjacent Building Transparency (min)</b>	15%	(Sec. 2C.3.4.C.4.)
<b>Planting Area</b>		(Sec. 2C.3.4.C.5.)
At Grade Plane Elevation (min)	25%	
Above Grade Plane Elevation (min)	n/a	
<b>Seating (min)</b>	2 per 400 sf	(Sec. 2C.3.4.C.6.)
<b>Ground Floor Elevation</b>	Required	(Sec. 2C.3.4.C.7.)
<b>Public Sidewalk/Way Adjacent</b>	Required	(Sec. 2C.3.4.C.8.)
<b>Pedestrian-Oriented Lighting</b>	Required	(Sec. 2C.3.4.C.9.)
<b>Publicly Accessible</b>	Not Required	(Sec. 2C.3.4.C.10.)
<b>Amenity Features (min)</b>	3	(Sec. 2C.3.4.C.11.)

### 3. Public Amenity Space

*Public amenity space is defined as a type of amenity space that is outdoors and, although privately owned, is open to the public, and meets the following standards:*

PUBLIC AMENITY SPACE		
Amenity Space Standards	Specification	Reference
<b>Outdoor Space</b>	Required	(Sec. 2C.3.4.C.1.)
<b>Amenity Area (min)</b>	400 sf	(Sec. 2C.3.4.C.2.)
<b>Horizontal Dimension (min)</b>	15'	(Sec. 2C.3.4.C.3.)
<b>Adjacent Building Transparency (min)</b>	15%	(Sec. 2C.3.4.C.4.)
<b>Planting Area</b>		(Sec. 2C.3.4.C.5.)
At Grade Plane Elevation (min)	25%	
Above Grade Plane Elevation (min)	n/a	
<b>Seating (min)</b>	2 per 400 sf	(Sec. 2C.3.4.C.6.)
<b>Ground Floor Elevation</b>	Required	(Sec. 2C.3.4.C.7.)
<b>Public Sidewalk/Way Adjacent</b>	Required	(Sec. 2C.3.4.C.8.)
<b>Pedestrian-Oriented Lighting</b>	Required	(Sec. 2C.3.4.C.9.)
<b>Publicly Accessible</b>	Required	(Sec. 2C.3.4.C.10.)
<b>Amenity Features (min)</b>	3	(Sec. 2C.3.4.C.11.)

### 4. Private Outdoor Amenity Space

*Private outdoor amenity space a type of amenity space that is uncovered or unenclosed and is available to an assigned unit or tenant space, and meets the following standards:*

PRIVATE OUTDOOR AMENITY SPACE		
Amenity Space Standards	Specification	Reference
<b>Outdoor Space</b>	Required	(Sec. 2C.3.4.C.1.)
<b>Amenity Area (min)</b>	50 sf	(Sec. 2C.3.4.C.2.)
<b>Horizontal Dimension (min)</b>		(Sec. 2C.3.4.C.3.)
Enclosed (min)	8'	
Unenclosed (min)	5'	
<b>Adjacent Building Transparency (min)</b>	15%	(Sec. 2C.3.4.C.4.)
<b>Planting Area</b>	n/a	(Sec. 2C.3.4.C.5.)
<b>Seating (min)</b>	2 per 400 sf	(Sec. 2C.3.4.C.6.)
<b>Ground Floor Elevation</b>	Not Required	(Sec. 2C.3.4.C.7.)
<b>Public Sidewalk/Way Adjacent</b>	Not Required	(Sec. 2C.3.4.C.8.)
<b>Pedestrian-Oriented Lighting</b>	Not Required	(Sec. 2C.3.4.C.9.)
<b>Publicly Accessible</b>	Not Required	(Sec. 2C.3.4.C.10.)
<b>Amenity Features (min)</b>	Not Required	(Sec. 2C.3.4.C.11.)



## 5. Common Indoor Amenity Space

*Common indoor amenity space is defined as a type of amenity space that is covered or enclosed, is legally required to be open to all tenants of a building, is intended to create opportunities for social and recreational activity for tenants, and meets the following standards:*

COMMON INDOOR AMENITY SPACE		
Amenity Space Standards	Specification	Reference
<b>Outdoor Space</b>	Not Required	(Sec. 2C.3.4.C.1.)
<b>Amenity Area (min)</b>	400 sf	(Sec. 2C.3.4.C.2.)
<b>Horizontal Dimension (min)</b>	10'	(Sec. 2C.3.4.C.3.)
<b>Adjacent Building Transparency (min)</b>	n/a	(Sec. 2C.3.4.C.4.)
<b>Planting Area</b>	n/a	(Sec. 2C.3.4.C.5.)
<b>Seating (min)</b>	n/a	(Sec. 2C.3.4.C.6.)
<b>Ground Floor Elevation</b>	Not Required	(Sec. 2C.3.4.C.7.)
<b>Public Sidewalk/Way Adjacent</b>	Not Required	(Sec. 2C.3.4.C.8.)
<b>Pedestrian-Oriented Lighting</b>	Not Required	(Sec. 2C.3.4.C.9.)
<b>Publicly Accessible</b>	Not Required	(Sec. 2C.3.4.C.10.)
<b>Amenity Features (min)</b>	1	(Sec. 2C.3.4.C.11.)

## D. Measurement

1. The enclosure of the horizontal dimension of an amenity space type shall be measured pursuant to Sec. 14.2.4. (*Enclosure*).
2. The grade plane elevation shall be determined per the standards written in Sec. 14.2.9. (*Grade Plane Elevation*).
  - a. For an amenity space type to be considered located at grade plane elevation, its elevation shall not be located at any elevation higher than the grade plane elevation calculation, but may be located lower.
  - b. For an amenity space type to be considered above grade plane elevation, it shall be located on a story that is above the first story of a structure.

## E. Relief

1. A deviation from amenity space standards may be granted in accordance with Sec. 13B.5.1. (*Alternative Compliance*).
2. A deviation from any amenity space dimensional standard of 20 percent or less may be granted in accordance with Sec. 13B.5.2. (*Adjustment*).
3. A deviation from any amenity space standard may be granted as a variance in accordance with Sec. 13B.5.3. (*Variance*).

## SEC. 2C.3.4. AMENITY DESIGN STANDARDS

### A. Intent

The intent of the standards of this *Section (Amenity Design Standards)* is to ensure that amenity spaces provide sufficient recreational area in a manner that is visually interesting, connects the development to its users or the public right-of-way, promotes environmental sensitivity, and creates opportunities for the congregation of individuals at the ground story or upper-stories of a development.

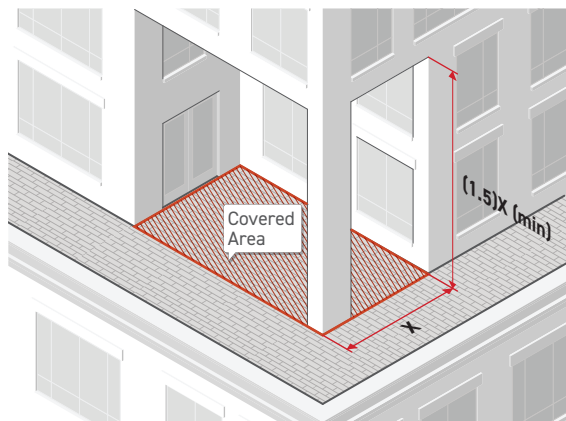
### B. Applicability

Amenity space design standards are determined by the amenity space types in *Sec. 2C.3.1. (Lot Amenity Space)* and *Sec. 2C.3.2. (Residential Amenity Space)*, and as established by *Sec. 2C.3.3. (Amenity Space Types)*.

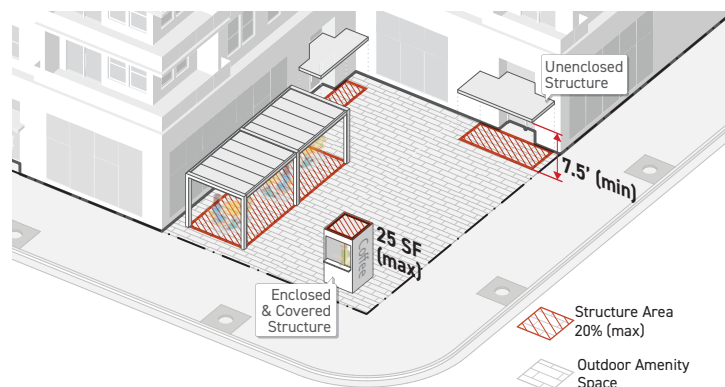
### C. Standards

#### 1. Outdoor Space

- a. Where the amenity space is enclosed, it shall not be covered. Where the amenity space is covered, it shall not be enclosed.
- b. No portion of an outdoor space may have a clear height of less than seven feet.
- c. Portions of an outdoor space that are covered shall have a minimum clear height of 1.5 times the depth of the covered area.



- d. The following structures are exempt from the outdoor space standards above, provided all exempted structures have a cumulative area no greater than 20 percent of the contiguous amenity space area.
  - i. Unenclosed structures having a clear height of at least seven feet; and
  - ii. An enclosed and covered structure, providing goods or services to tenants of the project or the public, having an area of no more than 25 square feet.



## 2. Amenity Area

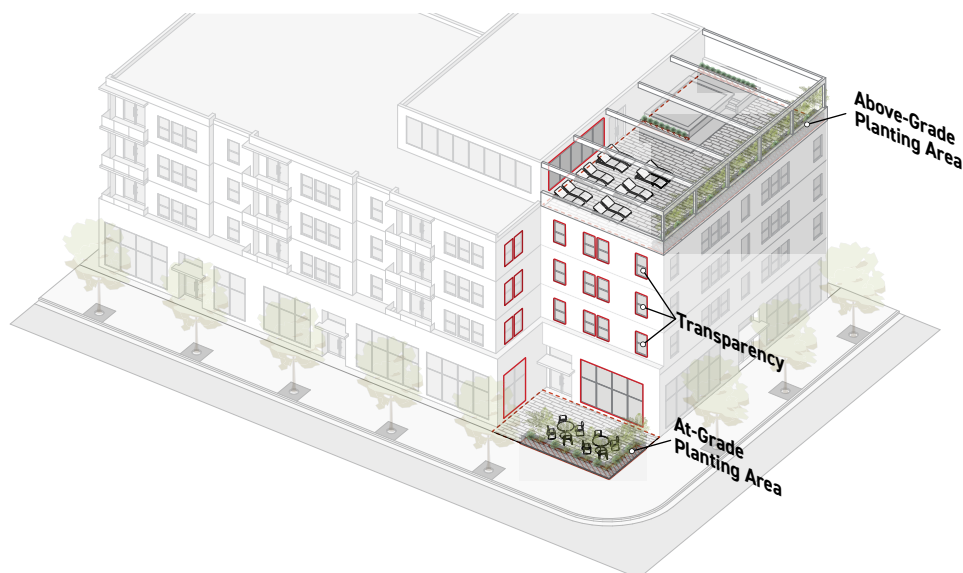
Each amenity space shall provide an area of no less than the minimum amenity area required by the amenity space type.

## 3. Horizontal Dimension

Each amenity space shall have the minimum horizontal dimension set by the amenity space type.

## 4. Adjacent Building Transparency

Building facades adjacent to the amenity space shall provide at least the minimum transparency percentage required by the amenity space type for each story.



## 5. **Planting Area**

- a. When an amenity space type satisfies its minimum planting area requirement at the grade plane elevation, the amenity space shall meet all other standards of the amenity space type within the minimum and maximum ground floor elevation as specified by the applied *Frontage District (Part 3B.)*. For other applicable standards, see *Sec. 4C.6.4.C.2. (Planting Areas)*.
- b. An amenity space shall provide at least the required minimum percentage of the total area of the amenity space as planting area.

## 6. **Seating**

- a. Permanent or movable seats shall be provided at the specified ratio based on the area in square feet of amenity space.
- b. Each permanent or movable seat provided within the amenity space shall count as one.
- c. Two linear feet of bench or seat wall provided within the amenity space shall be counted as one seat.

## 7. **Ground Floor Elevation**

- a. The finished floor or ground surface of the amenity space shall be located within the minimum and maximum ground floor elevations specified by the applied *Frontage District (Part 3B.)*.
- b. For measurement of ground floor elevation, see *Sec. 3C.6.2. (Ground Floor Elevation)*.

## 8. **Public Sidewalk/Way Adjacent**

- a. The amenity space shall abut a public sidewalk or public way for a minimum width of 15 feet.
- b. A pedestrian accessway having a minimum width of four feet shall connect the amenity space to the abutting public sidewalk or public way. No fixed wall or fence shall separate the amenity space from the abutting public sidewalk or public way for the minimum pedestrian accessway width.
- c. The space shall not be separated from the public sidewalk or public way by any structure or landscaping, with the exception of a Type A1 or Type A2 frontage yard fence & wall type as specified in *Sec. 3C.3.2. (Frontage Yard Fence & Wall)*.

## 9. **Pedestrian-Oriented Lighting**

The amenity space shall comply with the requirements of *Sec. 4C.10.1.C.3. (Pedestrian-Oriented Lighting)*.

## 10. Publicly Accessible

- a. The amenity space shall be made permanently available to the general public, at no cost, at minimum between sunrise and sunset daily.
- b. Signs shall be posted at every public entrance to the amenity space in accordance with the *Public Amenity Space Sign Standards* as established by the Director, and in accordance with *Div. 4C.11. (Signs)*. Standards include, but are not limited to, the following:
  - i. Minimum sign dimension, no less than 16 inches by 20 inches;
  - ii. Sign location requirements;
  - iii. Required posting of the hours of operation; and
  - iv. Mandatory language regarding public access.

## 11. Amenity Features

- a. The amenity space shall provide at least the minimum number of amenity features required by the amenity space type by providing from the list of options in the *Amenity Features Menu* as established by the Director, and shall be made permanently available to the tenants of the building.
- b. The location and number of amenity features shall be identified on the proposed plans submitted to the Department of Building and Safety, with the accompanying dimensions called out as required by the selected options.

## D. Measurement

1. Minimum amenity area is measured as an area in square feet calculated for each contiguous amenity space located on a lot. The area of the abutting parkway is not included in the total minimum amenity area.
2. The horizontal dimension shall be measured as the shortest horizontal distance along the boundaries of the amenity space, perpendicular to any boundary of the amenity space.
3. For measurement of transparency, see *Div. 3C.4. (Transparency)*.
4. For measurement of ground floor elevation, see *Sec. 3C.6.2. (Ground Floor Elevation)*.
5. The minimum width an amenity space is required to abut a public sidewalk or public way shall be measured following the geometry of the frontage lot line abutting the applicable public sidewalk or public way.
6. The minimum pedestrian accessway width shall be measured along the frontage lot line abutting the applicable public sidewalk or public way, from one edge of the accessway perpendicularly to the opposite edge.
7. For measurement of pedestrian-oriented lighting, see *Sec. 4C.10.1.D. (Measurement)*.

## **E. Relief**

1. A deviation from any amenity design dimensional standard of 20 percent or less may be granted in accordance with *Sec. 13B.5.2. (Adjustment)*.
2. A deviation from any amenity design standard may be granted as a variance in accordance with *Sec. 13B.5.3. (Variance)*.

## DIV. 2C.4. **FLOOR AREA RATIO & HEIGHT**

### SEC. 2C.4.1. **FLOOR AREA RATIO (FAR)**

*Floor area ratio or FAR is defined as the measurement of the total floor area of all buildings on a lot in relation to the size of the lot.*

#### **A. Intent**

The intent of the standards of this Section (*Floor Area Ratio (FAR)*) is to regulate the bulk and massing of buildings on a lot.

#### **B. Applicability**

Floor area ratio standards apply to new construction or a lot modification. When the floor area ratio standards apply, they apply to all buildings and structures located on a lot.

#### **C. Standards**

##### **1. Base**

A lot shall not exceed the maximum base FAR without meeting the requirements of an incentive program outlined in Article 9. (*Public Benefit Systems*).

##### **2. Bonus**

A lot may exceed the base FAR up to the maximum bonus FAR for projects participating in a community benefits program, pursuant to Div. 9.3. (*Community Benefits Program*). Projects participating in other incentive programs intended to implement state law, including *Density Bonus* (Sec. 9.2.1.), the *Permanent Supportive Housing Incentive Program* (Sec. 9.4.1.), or the *Accessory Dwelling Unit Incentive Program* (Div. 9.5.), may only exceed the maximum base FAR or maximum bonus FAR of the applied Form District (Part 2B.) if the project meets the eligibility and other program rules needed to qualify for floor area that exceeds the maximum base or bonus FAR established in the applied Form District (Part 2B.), pursuant to state law.

#### **D. Measurement**

1. FAR is calculated by dividing the total floor area on a lot by the lot area.
2. For the measurement of floor area, see Sec. 14.2.7. (*Floor Area*).
3. For the purpose of calculating FAR, portions of a lot designated for private streets may be counted as lot area. For the measurement of lot area, see Sec. 2C.1.1. (*Lot Area*).
4. For the purpose of calculating FAR, lot area is the same as buildable area referred to in the *City of Los Angeles Charter, Article I. (Incorporation and Powers), Sec. 104. (e) (Floor Area Restriction)*.

5. The *Downtown Community Plan Implementation Overlay* may define and measure buildable area differently than outlined in *Paragraph 4.* above for the purpose of calculating the maximum floor area using bonus FAR.

## E. Exceptions

For existing nonconforming building exceptions, see *Sec. 12.2.2. (Floor Area Ratio & Height Exceptions).*

## F. Relief

1. Additional FAR may be granted as a variance in accordance with *Sec. 13B.5.3. (Variance).*
2. For projects that include multiple parcels having different applied *Form Districts (Part 2B.),* floor area averaging across the development site may be granted, in accordance with *Sec. 13B.2.2. (Class 2 Conditional Use Permit).*

### a. Supplemental Findings

In addition to the findings in *Sec. 13B.2.2. (Class 2 Conditional Use Permit),* the *Zoning Administrator* shall also find that the project meets the following conditions:

- i. The project meets the definition of unified development;
- ii. All lots included in the project have a *Commercial-Mixed Use District (Div. 5B.5.), Industrial-Mixed Use District (Div. 5B.6.),* or *Industrial Use District (Div. 5B.7.)* applied, or the project is located entirely in the *Downtown Community Plan Area* and all lots included in the project have a *Residential-Mixed Use District (Div. 5B.4.), Commercial-Mixed Use District (Div. 5B.5.), Industrial-Mixed Use District (Div. 5B.6.),* or *Industrial Use District (Div. 5B.7.)* applied.
- iii. The total floor area of all structures on an individual lot may only exceed the FAR allowed pursuant to the applied *Form District (Part 2B.)* if the total floor area across all lots in the unified development does not exceed the sum of the maximum FAR calculated based on the maximum FAR specified by each applied *Form District (Part 2B.).*

### b. Supplemental Procedures

If the *Zoning Administrator* approves floor area averaging, then prior to the issuance of any building permits the property owner shall file with the *Department of Building and Safety* a covenant running with the land that specifies the following:

- i. The operation and maintenance of the development as a unified development is continued into perpetuity;
- ii. The floor area used and the remaining unbuilt floor area, if any, is allocated to each lot;
- iii. The unifying design elements are maintained and continued into perpetuity;



- iv. The covenant is binding on all assigns and successors in interest; and
- v. An individual or entity is specified to be responsible and accountable for compliance and the fee for the annual inspection of compliance by the Department of Building and Safety, required pursuant to *Sec. 15.3.12. (Annual Inspection of FAR Averaging & Density Transfer Covenants)*.

## SEC. 2C.4.2. **HEIGHT IN FEET**

*Height in feet is defined as the vertical dimension of a building or structure measured in feet.*

### A. **Intent**

The intent of the standards of this *Section (Height In Feet)* is to provide adequate light, air, safety, and to protect the character of an area and the interests of the general public.

### B. **Applicability**

Height in feet standards apply to all new construction or an exterior modification on a lot where the applied *Form District (Part 2B.)* specifies a maximum height in feet standard.

### C. **Standards**

#### 1. **Base**

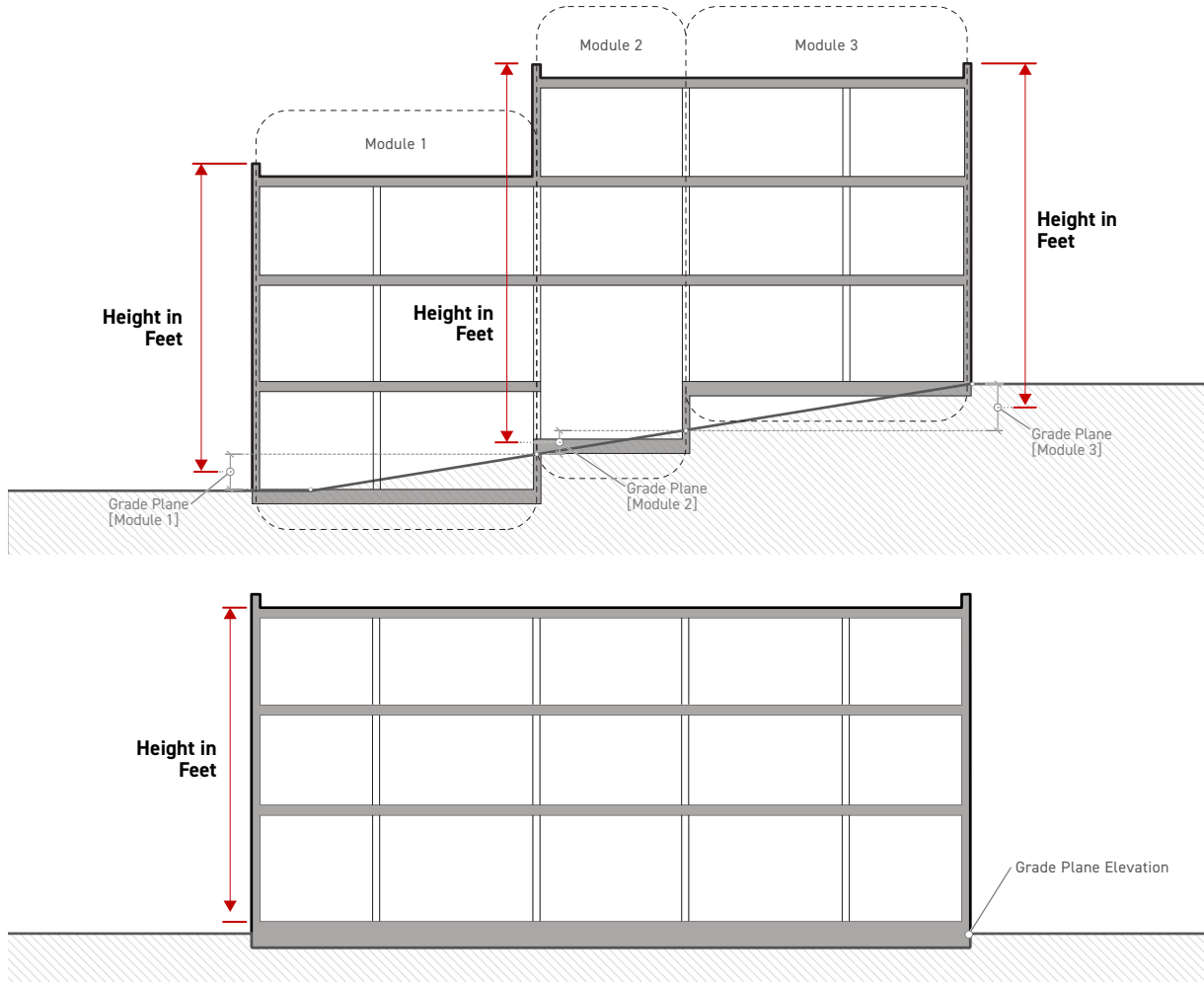
Buildings and structures shall not exceed the base maximum height in feet without meeting *Div. 9.3. (Community Benefits Program)*.

#### 2. **Bonus**

Buildings and structures may exceed the base maximum height in feet up to the bonus maximum height in feet as allowed in *Div. 9.3. (Community Benefits Program)*.

## D. Measurement

1. Maximum height in feet is measured as the vertical distance from grade plane to the top of the roof structure. One or more grade plane modules may be established for each building, as shown below. See Sec. 14.2.9.D. (*Building Module Method*).



2. Regardless of established grade plane, buildings shall also comply with ground floor elevation standards in Article 3. (*Frontage*).

## E. Exceptions

1. The following are allowed beyond the maximum height in feet, as specified below:

ALLOWED VERTICAL ENCROACHMENTS			
	Form District Height (max)		
	45' or less	> 45' to 90'	> 90'
<b>Mechanical/Electrical Equipment: Roof Mounted</b> (Sec. 14.2.5.B.1.b.)			
Encroachment (max)	3'	5'	10'
Setback from roof edge (min)	3'	3'	5'
<b>Architectural Elements</b> (Sec. 14.2.5.B.1.c.)			
Encroachment (max)	5'	5'	10'
Setback from roof edge (min)	3'	3'	5'
<b>Vertical Circulation</b> (Sec. 14.2.5.B.1.d.)			
Encroachment (max)	10'	20'	20'
Setback from roof edge (min)	0'	0'	0'
<b>Safety Barriers</b> (Sec. 14.2.5.B.1.e.)			
Encroachment (max)	6'	6'	6'
Setback from roof edge (min)	0'	0'	0'
<b>Unenclosed Structures</b> (Sec. 14.2.5.B.1.f.)			
Encroachment (max)	8'	8'	8'
Setback from roof edge (min)	5'	5'	5'
<b>Flatwork</b> (Sec. 14.2.5.B.1.g.)			
Encroachment (max)	2.5'	2.5'	2.5'
Setback from roof edge (min)	1'	1'	1'
<b>Vegetation</b> (Sec. 14.2.5.B.1.h.)			
Encroachment (max)	unlimited	unlimited	unlimited
Setback from roof edge (min)	1'	1'	1'

2. Modifications to existing structures may encroach beyond the limitations of the Allowed Vertical Encroachments table, pursuant to *Paragraph 1.* above, only where such limitations conflict with California State Accessibility Standards or Fire Code. When greater encroachments are necessary, the vertical encroachment shall extend the minimum amount necessary to achieve compliance.

## F. Relief

1. Increased building maximum height in feet of 20 percent or less may be granted in accordance with Sec. 13B.5.2. (*Adjustment*).
2. Increased vertical encroachments of 20 percent or less may be granted in accordance with Sec. 13B.5.2. (*Adjustment*).
3. Increased maximum building height in feet or vertical encroachments may be granted as a variance in accordance with Sec. 13B.5.3. (*Variance*).

## SEC. 2C.4.3. HEIGHT IN STORIES

*Height in stories is defined as the vertical dimension of a building measured in stories.*

### A. Intent

1. Maximum height in stories standards are intended to provide adequate light, air, safety, and to protect the character of an area and the interests of the general public. Intended to help provide variation in building heights, maximum height in stories standards help ensure that story heights are not reduced to fit within a maximum height in feet.
2. Minimum height in stories standards are intended to provide a method of establishing a minimum level of intensity on a lot, and ensure that lots are not underdeveloped.

### B. Applicability

1. Maximum height in stories standards apply to new construction or an exterior modification on a lot where the applied *Form District (Part 2B.)* specifies a maximum height in stories standard.
2. Minimum height in stories standards apply to new construction or an exterior modification on a lot where the applied *Form District (Part 2B.)* specifies a minimum height in stories standard.

### C. Standards

#### 1. Minimum Height in Stories

##### a. General

Each portion of building width used to meet the minimum build-to width standard specified by the applied *Frontage District (Part 3B.)* shall contain floor area for a depth no less than 15 feet on every story above the ground floor elevation, up to, and including the minimum height in stories specified by the applied *Form District (Part 2B.)*.

##### b. Bonus Minimum Height in Stories

- i. When bonus minimum height in stories is specified by the applied *Form District (Part 2B.)*, the minimum height in stories applies only to projects accessing bonus FAR pursuant to *Sec. 2C.4.1.C.2. (Bonus)*.
- ii. The minimum height in stories requirement does not apply to predominantly non-residential projects. For the purposes of bonus minimum height in stories, predominantly non-residential means projects where more than 50 percent of the total floor area of the project is allocated to non-residential uses (not including uses in the eating & drinking, personal services, and retail use groups).

## 2. Maximum Height in Stories

### a. Base

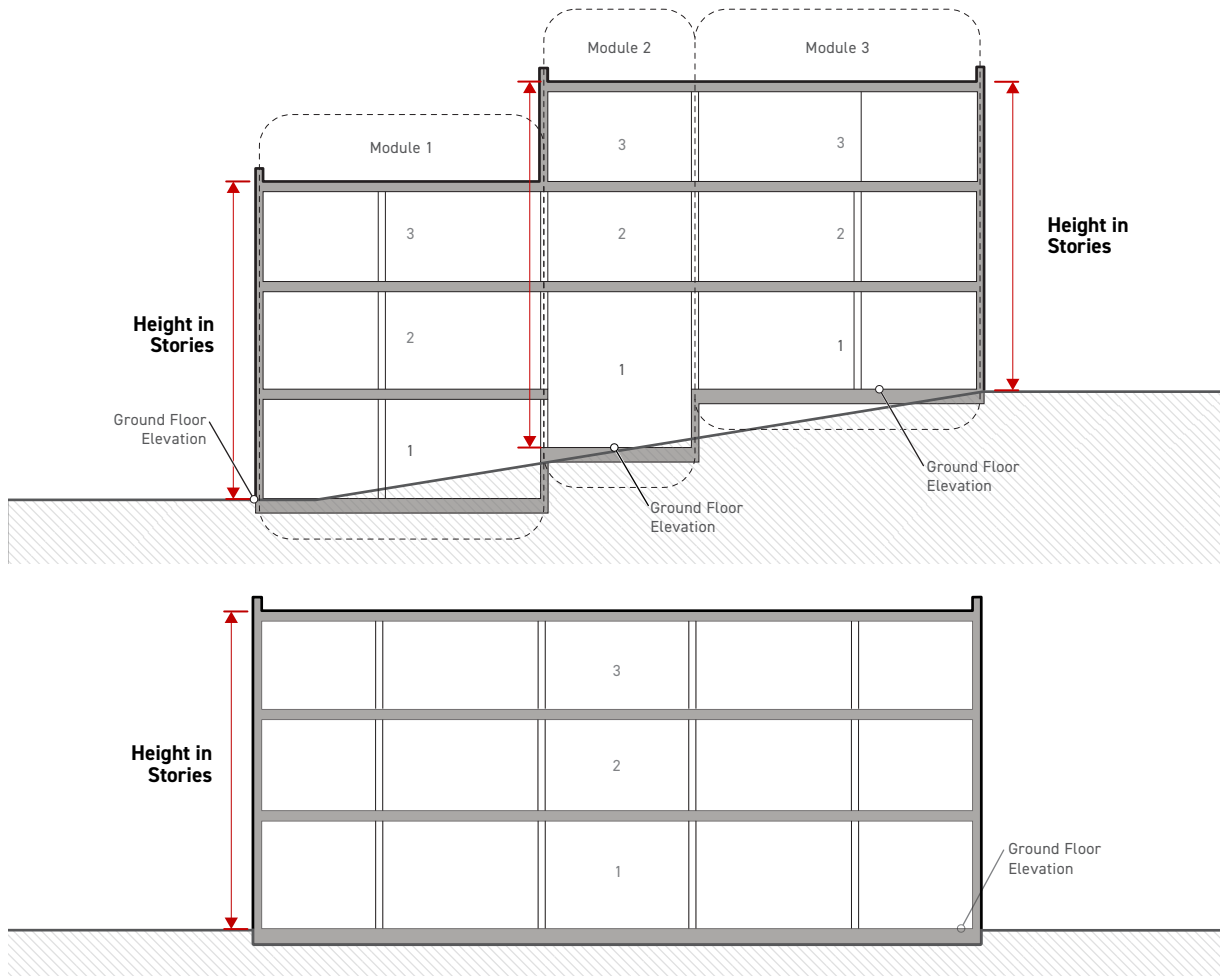
Buildings shall not exceed the base maximum height in stories without meeting Div. 9.3. (Community Benefits Program).

### b. Bonus

Buildings may exceed the base maximum height in stories up to the bonus maximum height in stories as allowed in Div. 9.3. (Community Benefits Program).

## D. Measurement

- Height in stories is measured as the number of stories above the ground floor elevation for each module of the building as shown below. See Sec. 14.2.9.D. (Building Module Method).



- For determining ground story, see Sec. 14.2.10.A. (Ground Story).

### 3. Structures without Stories

- a. For determining the maximum allowed height for structures that do not contain habitable stories when the applied form district does not also regulate height in feet, the maximum allowed height shall be determined by multiplying the maximum height in stories by 15 feet per allowable story. This resulting product shall be the maximum height allowed for a structure containing no habitable stories.
- b. When the applied form district includes a bonus maximum height in stories, the number of bonus stories specified shall be used to determine the maximum allowable height of structures containing no habitable stories.

### E. Exceptions

1. The following encroachments are allowed beyond the maximum height in stories, as specified below:

ALLOWED VERTICAL ENCROACHMENTS			
	Form District Height (max)		
	3 Stories or Less	3 to 7 Stories	More than 7 Stories
<b>Mechanical/Electrical Equipment: Roof Mounted (Sec. 14.2.5.B.1.b.)</b>			
Encroachment (max)	3'	5'	10'
Setback from roof edge (min)	3'	3'	5'
<b>Architectural Elements (Sec. 14.2.5.B.1.c.)</b>			
Encroachment (max)	5'	5'	10'
Setback from roof edge (min)	3'	5'	5'
<b>Vertical Circulation (Sec. 14.2.5.B.1.d.)</b>			
Encroachment (max)	10'	20'	20'
Setback from roof edge (min)	0'	0'	0'
<b>Safety Barriers (Sec. 14.2.5.B.1.e.)</b>			
Encroachment (max)	6'	6'	6'
Setback from roof edge (min)	0'	0'	0'
<b>Unenclosed Structures (Sec. 14.2.5.B.1.f.)</b>			
Encroachment (max)	8'	8'	8'
Setback from roof edge (min)	5'	5'	5'
<b>Flatwork (Sec. 14.2.5.B.1.g.)</b>			
Encroachment (max)	2.5'	2.5'	2.5'
Setback from roof edge (min)	1'	1'	1'
<b>Vegetation (Sec. 14.2.5.B.1.h.)</b>			
Encroachment (max)	unlimited	unlimited	unlimited
Setback from roof edge (min)	1'	1'	1'

2. Modifications to existing structures may encroach beyond the limitations of the Allowed Vertical Encroachments table, pursuant to *Paragraph 1.* above, only where such limitations conflict with California State Accessibility Standards or Fire Code. When greater encroachments are necessary, the vertical encroachment shall extend the minimum amount necessary to achieve compliance.

## **F. Relief**

1. An increase in maximum height in stories may be granted as a variance in accordance with *Sec. 13B.5.3. (Variance)*.
2. A reduction in minimum height in stories of one story may be granted in accordance with *Sec. 13B.5.2. (Adjustment)*.
3. A reduction in minimum height in stories may be granted as a Class 1 Conditional Use Permit. In addition to the findings otherwise required by *Sec. 13B.2.1. (Class 1 Conditional Use Permit)*, the Zoning Administrator shall also find that the reduction would be consistent with prevailing heights along the block face.
4. A reduction in minimum height in stories may be granted as a variance in accordance with *Sec. 13B.5.3. (Variance)*.

## **SEC. 2C.4.4. CITY HALL HEIGHT RESTRICTION**

*City Hall height restriction is defined as a restriction to the vertical dimension of a building based-on proximity and height relative to Los Angeles City Hall.*

### **A. Intent**

The intent of the standards of this *Section (City Hall Height Restriction)* is to maintain the prominence of the historic Los Angeles City Hall tower in the Downtown Civic Center area by ensuring that the height of the tower remains significantly taller than any other building surrounding City Hall.

### **B. Applicability**

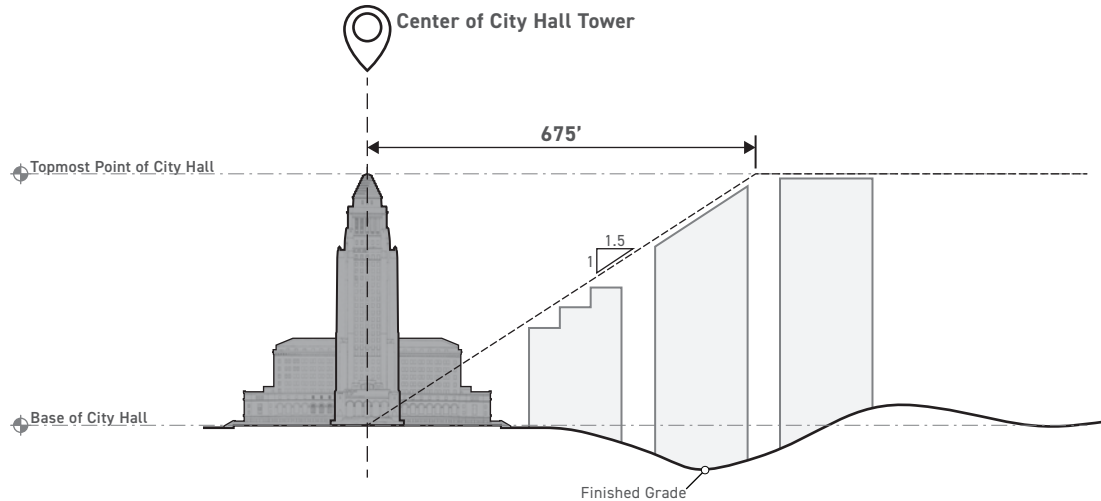
City Hall height restriction standards apply to new construction or an exterior modification on a lot where the applied *Form District (Part 2B.)* specifies "Yes" for City Hall height restriction.

### **C. Standards**

1. For portions of buildings or structures within 675 feet of City Hall, no portion of a building or structure may be located above an elevation equal to 1.5 times its distance from City Hall plus the elevation at the base of City Hall, as measured from sea level.

- For portions of buildings or structures located more than 675 feet from City Hall, no portion of a building or structure may be located above the elevation of the topmost point of City Hall.

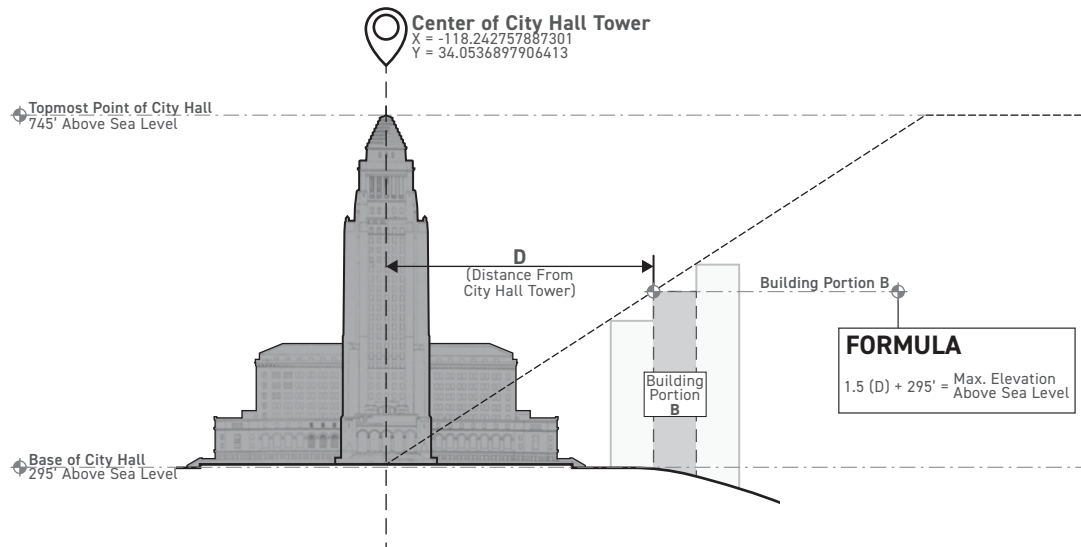
### CITY HALL HEIGHT RESTRICTION



## D. Measurement

### 1. Maximum Height

The maximum elevation of a building or portion of a building shall be calculated using the following formula:  $1.5(\text{distance}) + 295 \text{ feet} = \text{maximum elevation above sea level}$





## 2. Distance from City Hall Tower

Distance from City Hall is measured horizontally outward from the center point of its tower. The center point of the tower is considered to be located at the following geographic coordinates:

$$X = -118.242757887301$$

$$Y = 34.0536897906413$$

## 3. Topmost point of City Hall Tower

The topmost point of the City Hall tower is considered to be located at 745 feet above sea level. Any portion of a building or structure located below this elevation is considered to be located below the topmost point of the tower.

## 4. Base of City Hall Tower

The base of City Hall is considered to be located at 295 feet above sea level.

## E. Relief

An increase in building height above the City Hall height restriction may be granted as a variance in accordance with *Sec. 13B.5.3. (Variance)*.

## DIV. 2C.5. **BUILDING MASS**

### SEC. 2C.5.1. **BUILDING WIDTH**

*Building width is defined as the horizontal dimension of any building or collection of abutting buildings on a lot.*

#### A. **Intent**

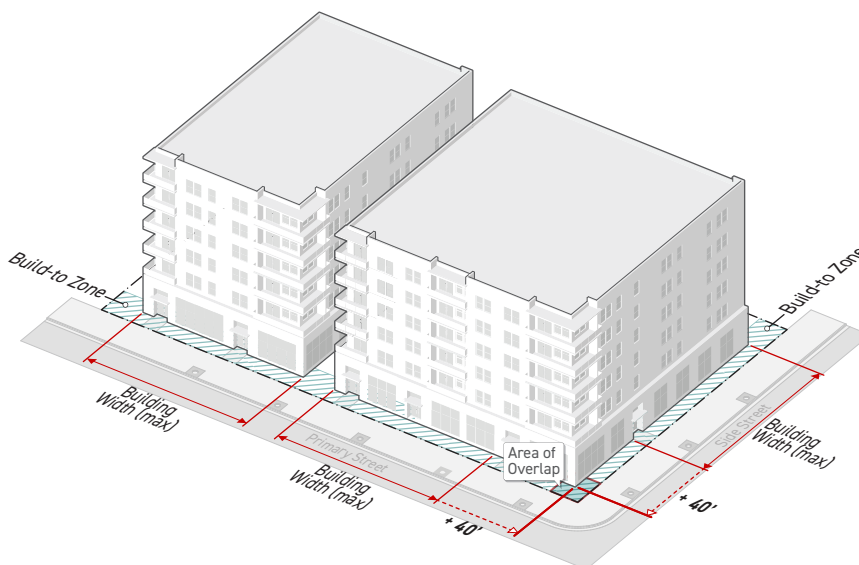
The intent of the standards of this Section (*Building Width*) is to promote fine-grained patterns of development and prevent long buildings that are significantly out of context with traditional patterns by breaking wide buildings into multiple, clearly distinguished building widths, and to encourage larger projects to provide open space for pedestrians and recreation.

#### B. **Applicability**

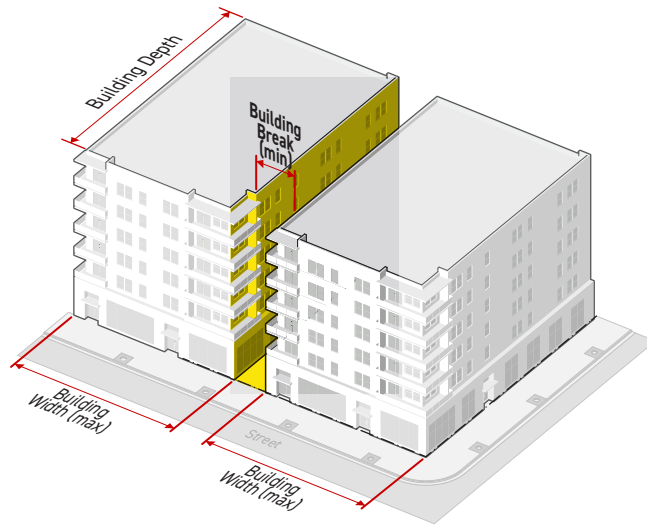
Building width standards apply to new construction or an exterior modification of any frontage lot line-facing buildings or structures. When the building width standards apply, the standards only apply to those portions of a building or structure located above the ground floor elevation.

#### C. **Standards**

1. No applicable building or collection of abutting buildings located on the same lot shall be wider than the maximum building width specified by the applied *Form District (Part 2B.)*.
2. In order to establish buildings on the same lot as separate buildings for the purpose of measuring maximum building width, a building break shall be provided between the buildings.
3. Buildings that are located on separate lots, share no interior circulation, and are structurally independent, are considered separate buildings for the purpose of measuring building width.
4. A building on a corner lot within the build-to zone area of overlap is allowed to exceed the maximum building width by up to 40 feet along both primary street lot lines and side street lot lines.

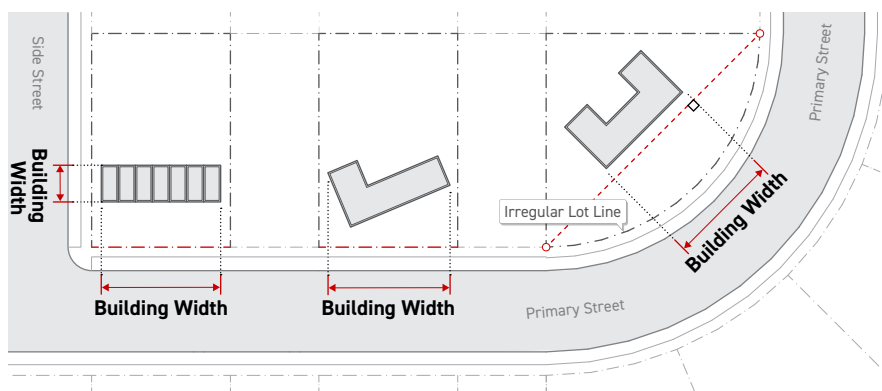


5. All applicable buildings and collections of abutting buildings located on the same lot shall be separated by at least the minimum building break dimension for the full depth of the building in order to establish them as separate buildings for the purpose of measuring building width.
6. No building or structure shall encroach into the building break, except where allowed in Subsection E. (Exceptions) below.



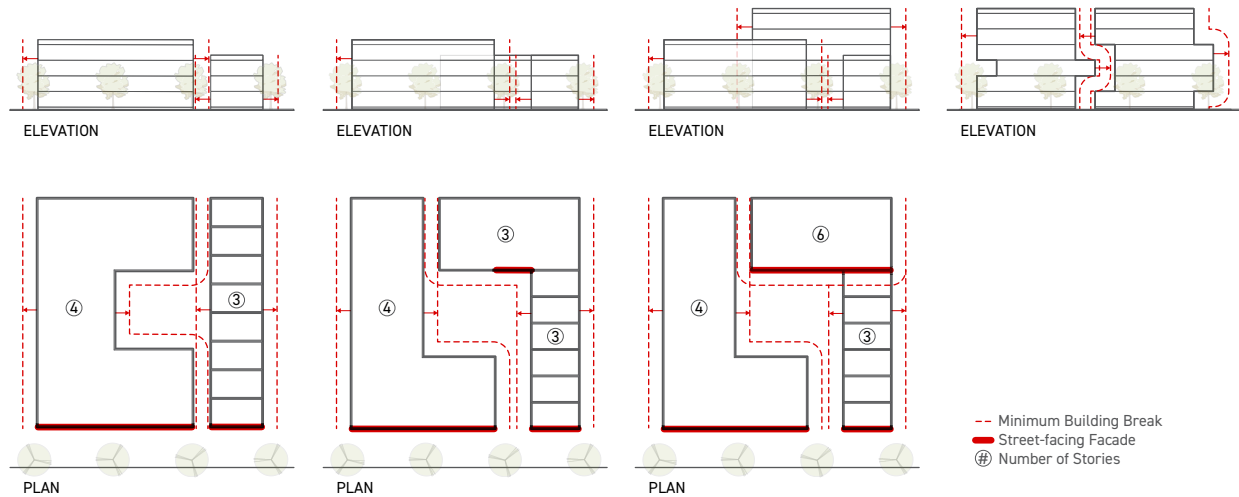
#### D. Measurement

1. Building width is measured horizontally and parallel to each primary street lot line and side street lot line from one end of an applicable building or collection of abutting buildings to the opposite end.



2. For lot line-facing, see Sec. 14.2.6. (Facing).
3. For measuring building width on irregular lot lines, see Sec. 14.2.14. (Irregular Lot lines).

4. A building break is measured perpendicular to the outermost surface of each applicable portion of a building both vertically and horizontally.



## E. Exceptions

### 1. Encroachments

The following are allowed to encroach into the building break, as listed below:

ALLOWED HORIZONTAL ENCROACHMENTS	
<b>Architectural Details (Sec. 14.2.5.A.1.a.)</b>	
Encroachment (max)	2'
Clear width (min)	3'
<b>Roof Projections (Sec. 14.2.5.A.1.b.)</b>	
Encroachment (max)	2.5'
Clear width (min)	3'
<b>Unenclosed Structures: Above Ground Story (Sec. 14.2.5.A.1.d. - Sec. 14.2.5.A.1.e.)</b>	
Encroachment (max)	5'
Clear width (min)	3'
<b>Mechanical/Electrical Equipment (Sec. 14.2.5.A.1.f. - Sec. 14.2.5.A.1.g.)</b>	
Encroachment (max)	1.5'
Clear width (min)	3'

### 2. Building Break Amenity Space Alternative

As an alternative to a building break, a street-facing amenity space that meets the following standards may be used to establish buildings or collections of abutting buildings as separate buildings for the purpose of measuring maximum building width:

- a. The amenity space shall meet the design standards of an amenity space type pursuant to Sec. 2C.3.3. (*Amenity Space Types*) and for outdoor space pursuant to Sec. 2C.3.4.C.1. (*Outdoor Space*).
- b. The amenity space width shall be at least two times the minimum building break dimension specified in the applied *Form District (Part 2B.)*, measured parallel to the applicable street lot line.
- c. The amenity space width shall not be greater than the maximum building width, measured parallel to the applicable street lot line.
- d. The amenity space depth shall be at least five times the minimum building break dimension specified in the applied *Form District (Part 2B.)*, measured perpendicular to the street lot line.
- e. A minimum of 75 percent of the amenity space area shall meet the design standards in Sec. 2C.3.3.C.2. (*Pedestrian Amenity Space*).
- f. The amenity space may count toward the required minimum build-to width required by the applied *Frontage District (Part 3B.)*, provided it meets the requirements of Sec. 3C.1.3.E. (*Exceptions*).
- g. Any portion of the amenity space may count toward lot amenity space and residential amenity space, provided it meets all applicable standards.



## F. Relief

1. Increased building width of 20 percent or less or reduced building break of 20 percent or less may be granted in accordance with Sec. 13B.5.2. (*Adjustment*).
2. Increased building width or reduced building break may be granted as a variance in accordance with Sec. 13B.5.3. (*Variance*).

## DIV. 2C.6. UPPER-STORY BULK

### SEC. 2C.6.1. STREET STEP-BACK

*Street step-back is a step-like recess in the massing of a building that requires upper stories to be pushed back from the lower stories from the street.*

#### A. Intent

The intent of the standards of this Section (*Street Step-Back*) is to reduce the perceived bulk and mass of a building along facades facing public ways, ensuring a height along the street that is appropriate to its neighboring context, while allowing for additional building height.

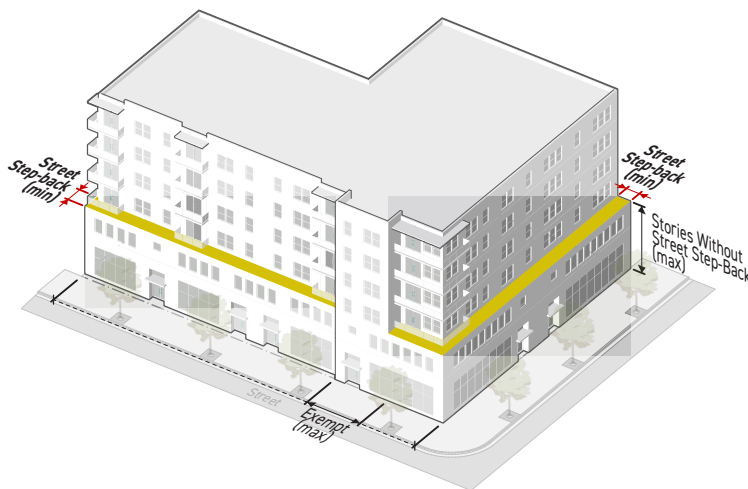
#### B. Applicability

Street step-back standards apply to new construction, a major remodel, or a facade modification of buildings or structures on a lot that face a frontage lot line.

#### C. Standards

The following standards shall be met for a minimum of 85 percent of the building width:

1. When the applied *Form District (Part 2B.)* specifies a maximum number of stories without a step-back, all stories above that maximum shall be stepped back from the street-facing facade by at least the minimum street step-back depth, as specified by the applied *Form District (Part 2B.)*.
2. No building or structure shall extend into a minimum street step-back depth, except where allowed in *Subsection E. (Exceptions)* below.
3. Buildings having a height less than the maximum stories without street step-back are not required to provide a street step-back.



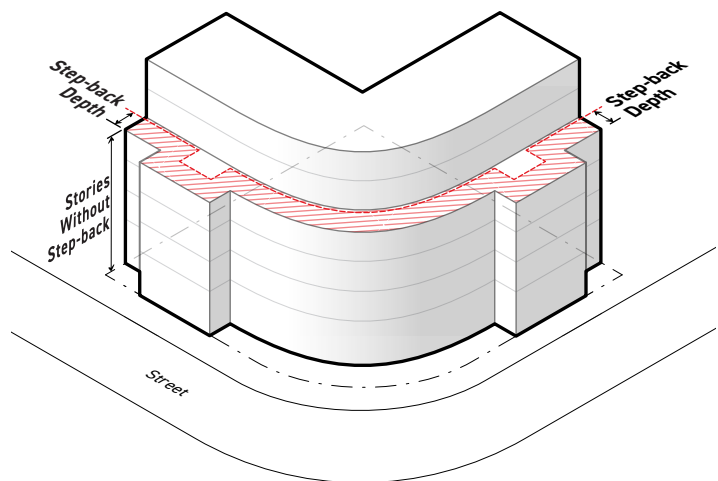
D. Measurement

1. Stories Without Street Step-back

When the applied *Form District (Part 2B.)* specifies a maximum number of stories without a step-back, that maximum is measured according to *Sec. 2C.4.3. (Height in Stories)*.

2. Street Step-back Depth

Minimum street step-back depth is measured as the horizontal distance from the outermost edge of the building facade with the topmost story without street step-back to the outermost edge of the facade of the stepped back stories. Street step-back depth is required regardless of the provided or required building setback.



E. Exceptions

The following are allowed to encroach beyond the street step-back as listed below:

ALLOWED HORIZONTAL ENCROACHMENTS	
<b>Architectural Details (Sec. 14.2.5.A.1.a.)</b>	
Encroachment (max)	2'
<b>Roof Projections (Sec. 14.2.5.A.1.b.)</b>	
Encroachment (max)	2.5'
<b>Unenclosed Structures (Sec. 14.2.5.A.1.c. - Sec. 14.2.5.A.1.d.)</b>	
Encroachment (max)	5'
<b>Enclosed Structures: Projecting (Sec. 14.2.5.A.1.e.)</b>	
Encroachment (max)	2.5'
<b>Mechanical/Electrical Equipment (Sec. 14.2.5.A.1.f. - Sec. 14.2.5.A.1.g.)</b>	
Encroachment (max)	1.5'

ALLOWED VERTICAL ENCROACHMENTS	
<b>Mechanical/Electrical Equipment: Roof Mounted (Sec. 14.2.5.B.1.b.)</b>	
Encroachment (max)	5'
Setback from roof edge (min)	3'
<b>Architectural Elements (Sec. 14.2.5.B.1.c.)</b>	
Encroachment (max)	5'
Setback from roof edge (min)	2'
<b>Safety Barriers (Sec. 14.2.5.B.1.e.)</b>	
Encroachment (max)	4'
Setback from roof edge (min)	0'
<b>Unenclosed Structures (Sec. 14.2.5.B.1.f.)</b>	
Encroachment (max)	8
Setback from roof edge (min)	2'
<b>Flatwork (Sec. 14.2.5.B.1.g.)</b>	
Encroachment (max)	2.5'
Setback from roof edge (min)	1'
<b>Vegetation (Sec. 14.2.5.B.1.h.)</b>	
Encroachment (max)	unlimited
Setback from roof edge (min)	1'

## F. Relief

1. A reduced street step-back depth of 20 percent or less may be granted in accordance with Sec. 13B.5.2. (Adjustment).
2. A reduced street step-back greater than 20 percent may be granted as a variance in accordance with Sec. 13B.5.3. (Variance).
3. Increased stories without street step-back may be granted as a variance in accordance with Sec. 13B.5.3. (Variance).

## SEC. 2C.6.2. DISTRICT BOUNDARY HEIGHT TRANSITION

*District boundary height transition is defined as a reduction in the maximum height of a building for a limited depth where abutting districts have substantially lower height allowances.*

### A. Intent

The intent of this *Section (District Boundary Height Transition)* is to prevent looming impacts and reduce the perceived bulk and mass of buildings along zoning district boundaries where maximum height standards change significantly.

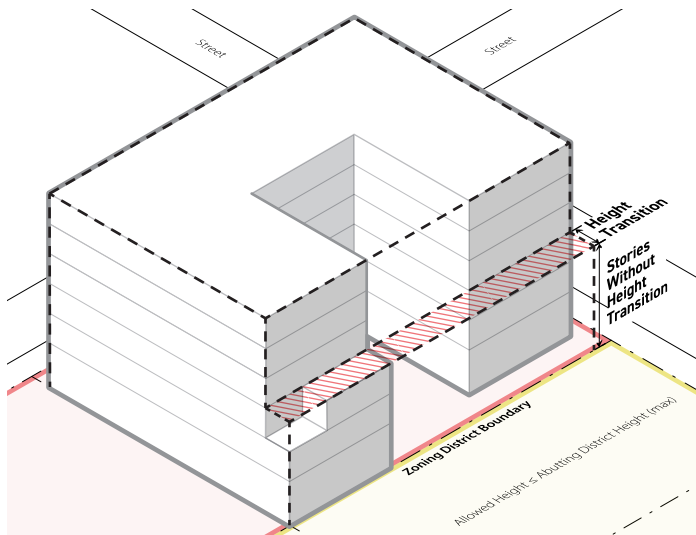


## B. Applicability

1. District boundary height transition standards apply to all lots abutting a zoning district that have a maximum height or bonus height of less than or equal to the abutting district allowed height pursuant to Sec. 2C.6.2.D.1. (*Abutting District Allowed Height*) below, specified by the applied Form District (Part 2B.).
2. All structures located on an applicable lot shall comply with district boundary height transition standards unless listed as an exception in Subsection E. (*Exceptions*) below.

## C. Standards

1. Any portion of a story located above the maximum stories without height transition pursuant to Sec. 2C.6.2.D.2. (*Stories Without Height Transition*) below, shall be located no less than the minimum height transition depth pursuant to Sec. 2C.6.2.D.3 (*Height Transition Depth*) below, from any lot zoned with a district that specifies a maximum building height of less than or equal to the maximum abutting district allowed height pursuant to Sec. 2C.6.2.D.1. (*Abutting District Allowed Height*) below.



2. Buildings are not required to provide a district boundary height transition from public right-of-ways.
3. No structure or portion of a structure shall be located within the minimum height transition depth pursuant to Sec. 2C.6.2.D.3. (*Height Transition Depth*) below, except where allowed in Subsection E. (*Exceptions*).

## D. Measurement

### 1. Abutting District Allowed Height

Abutting district allowed height is measured for every abutting lot which is zoned with a different zoning district than the subject lot. The abutting district height is considered to be the maximum height or bonus height allowed by the zoning district applied to the abutting lot.

### 2. Stories Without Height Transition

Stories without height transition is measured according to *Sec. 2C.4.3. (Height in Stories)*.

### 3. Height Transition Depth

Height transition depth is measured as the horizontal distance from any lot zoned with a district that specifies a maximum building height of less than or equal to the maximum abutting district allowed height (*Paragraph 1. (Abutting District Allowed Height)* above) to the nearest point of any structure located above the specified maximum stories without height transition pursuant to *Paragraph 2. (Stories Without Height Transition)* above.

## E. Exceptions

The following are allowed to encroach into the district boundary height transition as listed below:

ALLOWED HORIZONTAL ENCROACHMENTS	
<b>Architectural Details</b> ( <i>Sec. 14.2.5.A.1.a.</i> )	
Encroachment (max)	2'
<b>Roof Projections</b> ( <i>Sec. 14.2.5.A.1.b.</i> )	
Encroachment (max)	2.5'
<b>Unenclosed Structures</b> ( <i>Sec. 14.2.5.A.1.c. - Sec. 14.2.5.A.1.d.</i> )	
Encroachment (max)	5'
<b>Enclosed Structures: Projecting</b> ( <i>Sec. 14.2.5.A.1.e.</i> )	
Encroachment (max)	2.5'
<b>Mechanical/Electrical Equipment</b> ( <i>Sec. 14.2.5.A.1.f. - Sec. 14.2.5.A.1.g.</i> )	
Encroachment (max)	1.5'

ALLOWED VERTICAL ENCROACHMENTS	
<b>Mechanical/Electrical Equipment (Sec. 14.2.5.B.1.b.)</b>	
Encroachment (max)	5'
Setback from roof edge (min)	3'
<b>Architectural Elements (Sec. 14.2.5.B.1.c.)</b>	
Encroachment (max)	5'
Setback from roof edge (min)	2'
<b>Safety Barriers (Sec. 14.2.5.B.1.e.)</b>	
Encroachment (max)	4'
Setback from roof edge (min)	0'
<b>Unenclosed Structures (Sec. 14.2.5.B.1.f.)</b>	
Encroachment (max)	8
Setback from roof edge (min)	2'
<b>Flatwork (Sec. 14.2.5.B.1.g.)</b>	
Encroachment (max)	2.5'
Setback from roof edge (min)	1'
<b>Vegetation (Sec. 14.2.5.B.1.h.)</b>	
Encroachment (max)	unlimited
Setback from roof edge (min)	1'

## F. Relief

1. A reduced height transition depth of 20 percent or less may be granted in accordance with Sec. 13B.5.2. (*Adjustment*).
2. A reduced height transition depth may be granted as a variance in accordance with Sec. 13B.5.3. (*Variance*).
3. Increased stories without height transition may be granted as a variance in accordance with Sec. 13B.5.3. (*Variance*).